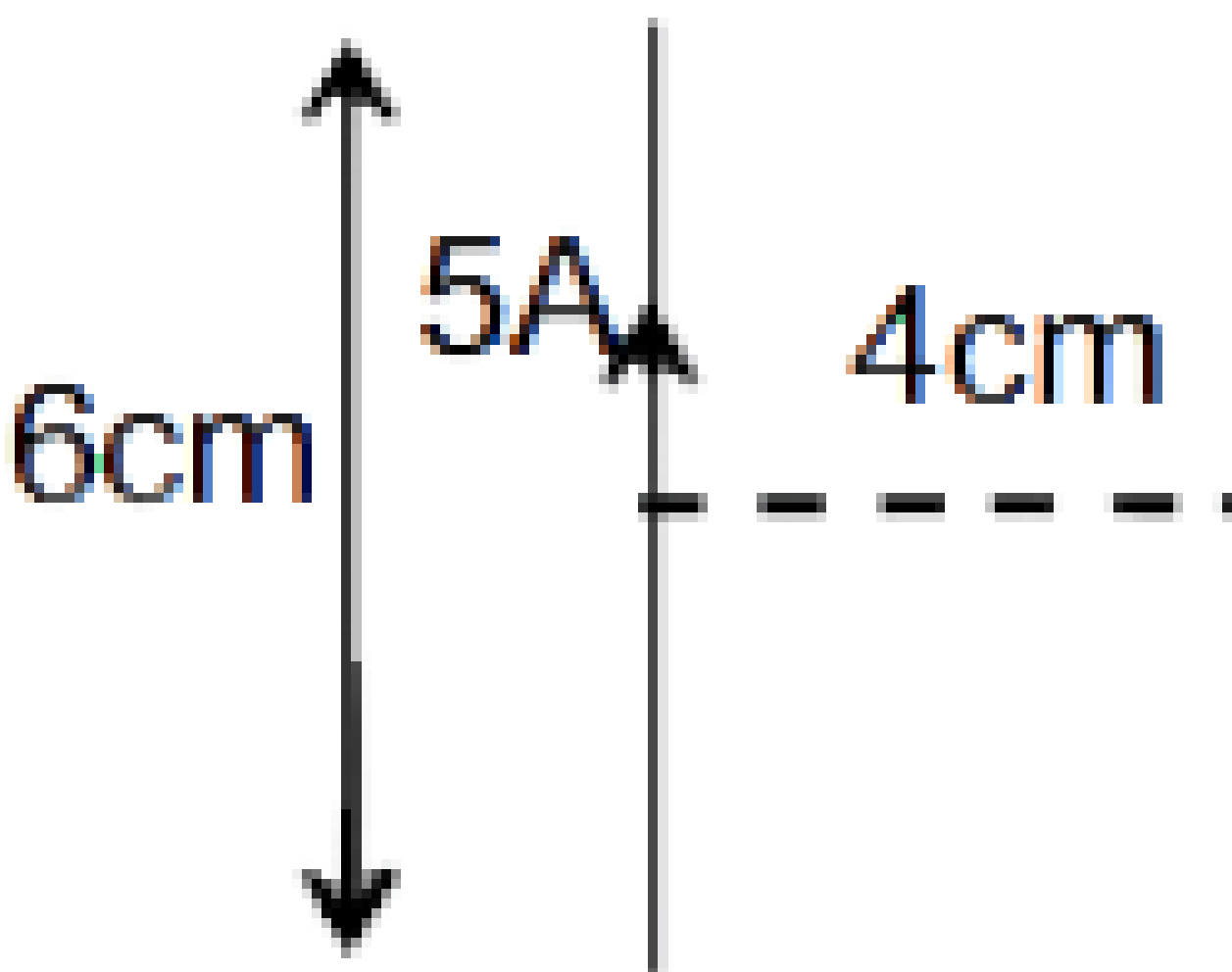


| Ques No.    | Question  |
|-------------|---|
| 1 - 9677705 | <p data-bbox="344 694 2045 872"><b>JEE MAINS 12 APRIL 2019 - PAPER 1 SHIFT 2 - MEMORY BASED - PHYSICS</b></p> <p data-bbox="344 1050 2045 1436">In resonance tube experiment with a tuning fork of frequency <math>480\text{Hz}</math> the consecutive resonance lengths are <math>30\text{cm}</math> then determine speed of sound is</p> <div data-bbox="344 1673 714 2237"><p>(A) <math>200\text{m/s}</math></p><p>(B) <math>256\text{m/s}</math></p><p>(C) <math>384\text{m/s}</math></p><p>(D) <math>240\text{m/s}</math></p></div> <hr data-bbox="344 2415 2045 2421"/> <p data-bbox="344 2475 1003 2534"><b>CORRECT OPTION: C</b></p> <p data-bbox="344 2700 917 2736"><a href="#">Watch Free Video Solution on Doubtnut</a></p> |

**JEE MAINS 12 APRIL 2019 - PAPER 1 SHIFT 2 -  
MEMORY BASED - PHYSICS**

A conducting wire carries  $5A$  current. Its length is  $6cm$ . Then the magnetic field intensity at a distance of  $4cm$  from the wire on the perpendicular bisector of the wire is



- (A)  $1.5 \times 10^{-5} T$
- (B)  $1.5 \times 10^{-3} T$
- (C)  $3 \times 10^{-5} T$
- (D)  $0.75 \times 10^{-5} T$

---

**CORRECT OPTION: A**

[📺 Watch Free Video Solution on Doubtnut](#)

3 - 9677708

**JEE MAINS 12 APRIL 2019 - PAPER 1 SHIFT 2 -  
MEMORY BASED - PHYSICS**

A spring of length ' $l$ ' has spring constant ' $k$ ' is cut into two parts of length  $l_1$  and  $l_2$ . If their respective spring constant are  $K_1$  and  $K_2$ , then  $\frac{K_1}{K_2}$  is:

(A)  $\frac{l_2}{l_1}$

(B)  $\frac{2l_2}{l_1}$

(C)  $\frac{l_1}{l_2}$

(D) None

---

**CORRECT OPTION: A**

## JEE MAINS 12 APRIL 2019 - PAPER 1 SHIFT 2 - MEMORY BASED - PHYSICS

In isobaric process of ideal gas ( $f = 5$ ) work done by gas is equal of  $10J$ . Then heat given to gas during process:

(A)  $25J$

(B)  $15J$

(C)  $45J$

(D)  $35J$

---

**CORRECT OPTION: D**

## JEE MAINS 12 APRIL 2019 - PAPER 1 SHIFT 2 - MEMORY BASED - PHYSICS

Two particles are projected obliquely from ground with same speed such that their range ' $R$ ' are same but they attain different maximum heights  $h_1$  and  $h_2$  then relation between  $R$ ,  $h_1$  and  $h_2$  is:

(A)  $R^2 = 16h_1h_2$

(B)  $R^2 = 8h_1h_2$

(C)  $R^2 = 4h_1h_2$

(D)  $R^2 h_1 h_2$

---

**CORRECT OPTION: A**

[📺 Watch Free Video Solution on Doubtnut](#)

6 - 9677711

**JEE MAINS 12 APRIL 2019 - PAPER 1 SHIFT 2 -  
MEMORY BASED - PHYSICS**

A drop of liquid is broken down into 27 identical liquid drops.

If the terminal velocity of original liquid drops is  $V_T$ , then find

the terminal velocity of the new liquid drop thus formed.

- (A)  $\frac{V_T}{3}$   
(B)  $\frac{V_T}{9}$   
(C)  $\frac{V_T}{27}$   
(D)  $\frac{9V_T}{9}$

---

**CORRECT OPTION: B**

[▶ Watch Free Video Solution on Doubtnut](#)

7 - 9677712

**JEE MAINS 12 APRIL 2019 - PAPER 1 SHIFT 2 -  
MEMORY BASED - PHYSICS**

$1kg$  of water is at  $20^{\circ}C$ . A resistor of  $20\Omega$  is connected across  $200V$  battery and the heat dissipated is supplied to water then the time taken by the water to evaporate is :

(Specific heat =  $4200j/kg^{\circ}C$ , Latent heat  
=  $2260k\frac{j}{K}g$ )

- (A) 44 minutes
- (B) 33 minutes
- (C) 22 munutes
- (D) 11 minutes

CORRECT OPTION: C

📺 Watch Free Video Solution on Doubtnut



Get Answer just with a click!

**doubtnut**  
has more than  
1 Lakh Video  
Solutions

Update the App now!

GET IT ON  
**Google Play**

8 - 9677713

JEE MAINS 12 APRIL 2019 - PAPER 1 SHIFT 2 -  
MEMORY BASED - PHYSICS

In amplitude modulation carrier wave is  $C = 4 \sin 2000t$  and message wave  $M = 2 \sin 200t$ , Find out modulation index.

(A) 9

(B) 3

(C)  $\frac{1}{9}$

(D)  $\frac{1}{3}$

---

**CORRECT OPTION: D**

[📺 Watch Free Video Solution on Doubtnut](#)

9 - 9677714

**JEE MAINS 12 APRIL 2019 - PAPER 1 SHIFT 2 -  
MEMORY BASED - PHYSICS**

A cannot engine has efficiency  $\frac{1}{6}$ . If temperature of sink is decreased by  $62^\circ C$  then its efficiency becomes  $\frac{1}{3}$  then the temperature of source and sink:



(A)  $T_H = 98^\circ C, T_C = 36^\circ C$

(B)  $T_H = 99^\circ C, T_C = 37^\circ C$

(C)  $T_H = 100^\circ C, T_C = 38^\circ C$

(D)  $T_H = 102^\circ C, T_C = 40^\circ C$

---

**CORRECT OPTION: B**

[📺 Watch Free Video Solution on Doubtnut](#)

10 - 9677715

**JEE MAINS 12 APRIL 2019 - PAPER 1 SHIFT 2 -  
MEMORY BASED - PHYSICS**

If a galvanometer has full scale deflection current  $I_g$  and resistance  $G$ . A shunt resistance  $R_A$  is used to convert it into an ammeter of range  $I_0$  and a resistance  $R_V$  is connected in series to convert it into a voltmeter of range  $V_0$  such that  $V_0 = I_0 G$  then  $R_A R_V$  and  $R_A \frac{I_0}{I_g}$  respectively are:

- (A)  $G^2$  and  $\frac{I_2^G}{(I_0 - I_G^2)}$
- (B)  $G^2$  and  $\frac{I_0^2}{(I_0 - I_G^2)}$
- (C)  $G^2$  and  $\frac{I_G}{(I_0 - I_g)}$
- (D)  $G^2$  and  $\frac{I_G^2}{(I_0 + I_G)^2}$

**CORRECT OPTION: A**

[📺 Watch Free Video Solution on Doubtnut](#)

11 - 9677716

**JEE MAINS 12 APRIL 2019 - PAPER 1 SHIFT 2 -  
MEMORY BASED - PHYSICS**

The

$\lambda_{De} - \text{Broglie wave} \leq n > h \omega_e \leq \text{electron}$

$\in \text{second excited state of hydrogen} \geq n a \rightarrow \text{mis}(A)$

5A(B) 10A(C) 100A(D) 6.6A`

**CORRECT OPTION: B**

## JEE MAINS 12 APRIL 2019 - PAPER 1 SHIFT 2 - MEMORY BASED - PHYSICS

An observer moves on the same line on which two sources of sound of frequency  $660\text{Hz}$  are present. The observer observes beat frequency of  $10\text{Hz}$ . If speed of sound is  $300\text{m/s}$  then speed of the observer is:

12 - 9677717

(A)  $6\text{m/s}$

(B)  $3\text{m/s}$

(C)  $2.5\text{m/s}$

(D)  $4\text{m/s}$

---

**CORRECT OPTION: C**

13 - 9677718

**JEE MAINS 12 APRIL 2019 - PAPER 1 SHIFT 2 -  
MEMORY BASED - PHYSICS**

Velocity of a particle as function of displacement  $x$  is given by  $v = bx^{1/2}$ . Then the displacement as function of time is:

(A)  $bt$

(B)  $\frac{b^2 t^2}{4}$

(C)  $\frac{bt}{4}$

(D)  $\frac{b^2 t^3}{4}$

---

**CORRECT OPTION: B**

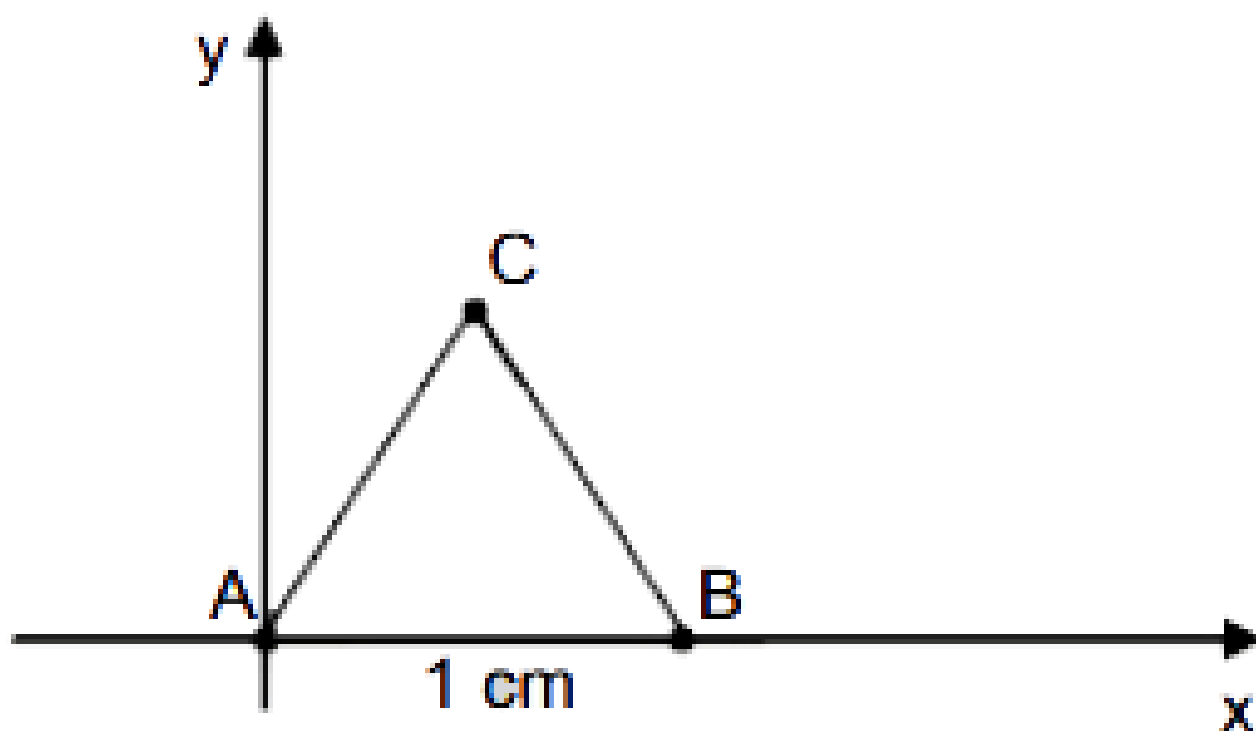
[📺 Watch Free Video Solution on DoubtNut](#)

14 - 9677719

**JEE MAINS 12 APRIL 2019 - PAPER 1 SHIFT 2 -  
MEMORY BASED - PHYSICS**

Three particles  $A(50g)$ ,  $B(100g)$  and  $C(150g)$  are placed at vertices of an equilateral triangle as shown in figure.

Then the coordinates of center of mass of system is :



- (A)  $\left( \frac{7}{12}, \frac{\sqrt{3}}{4} \right) cm$
- (B)  $\left( \frac{\sqrt{3}}{4}, \frac{7}{12} \right) cm$
- (C)  $\left( \frac{7}{16}, \frac{\sqrt{3}}{8} \right) cm$
- (D)  $\left( \frac{\sqrt{3}}{8}, \frac{7}{16} \right) cm$

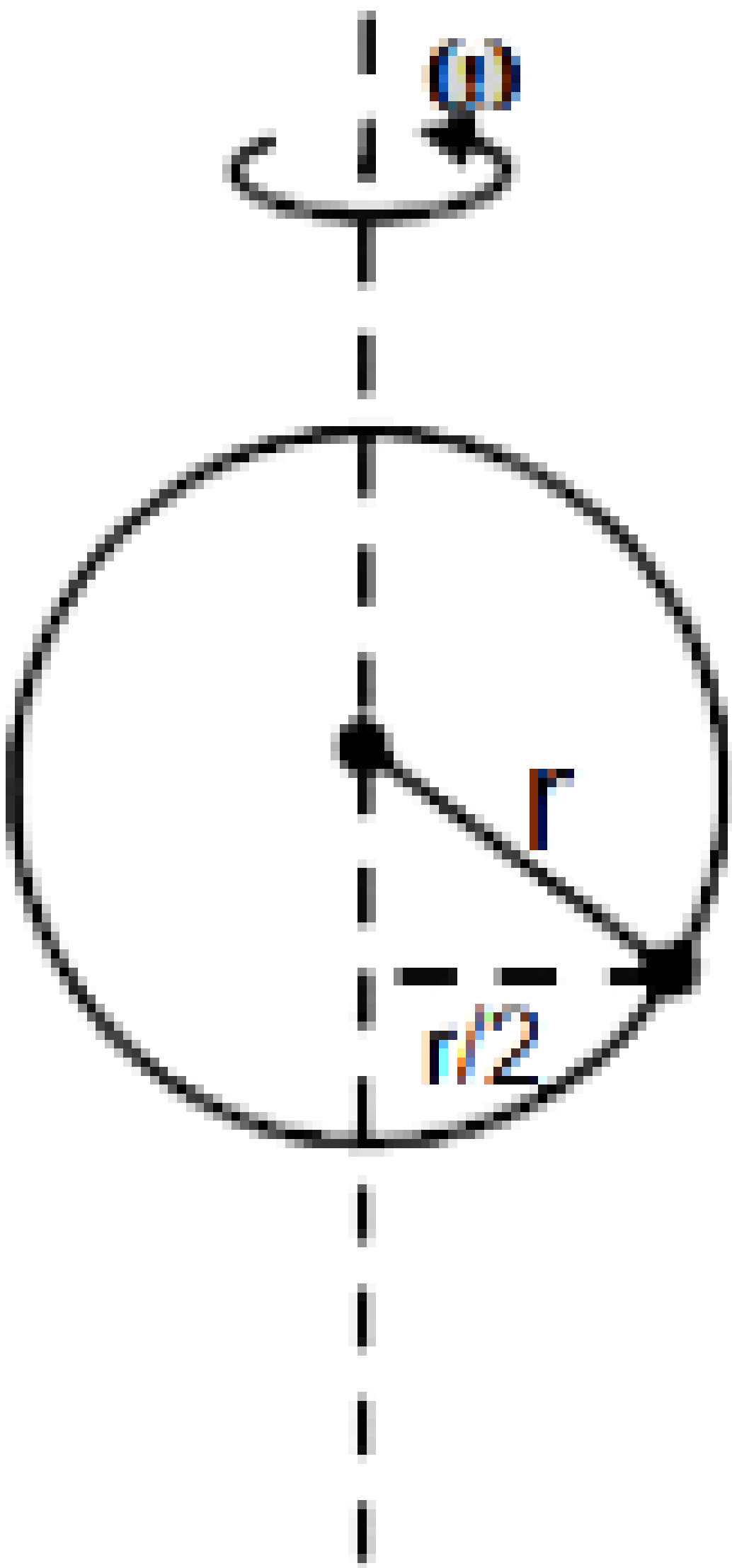
---

**CORRECT OPTION: A**

[© Watch Free Video Solution on Doubtnut](#)

## MEMORY BASED - PHYSICS

A ring of radius  $r$  is rotating about a vertical axis along its diameter with constant angular velocity  $\omega$ . A bead of mass  $m$  remains at rest w.r.t. ring at the position shown in figure. Then  $\omega^2$  is:



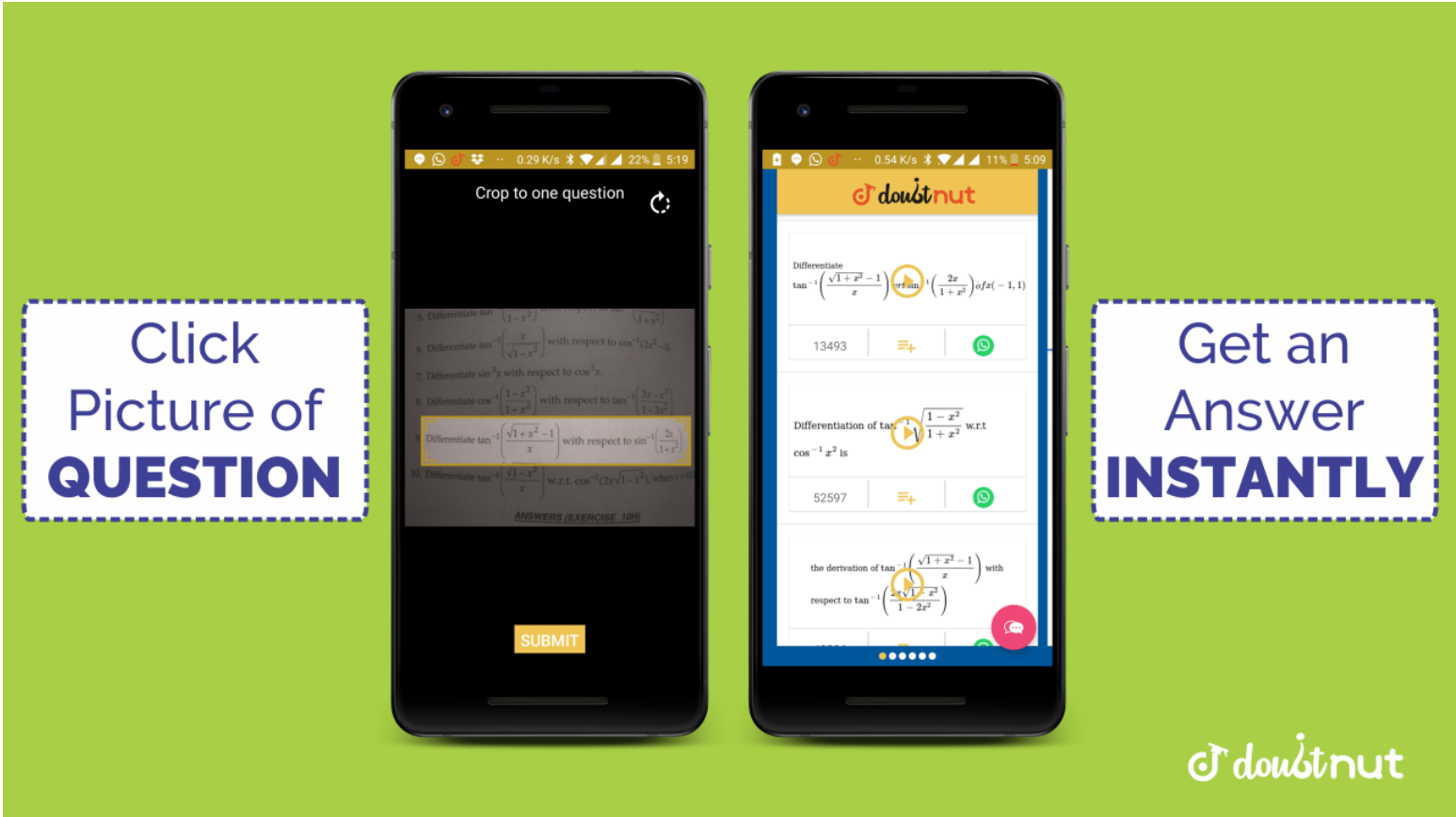
- (A)  $\frac{g}{\sqrt{3}}$   
 (B)  $\frac{2g}{\sqrt{3}r}$

(C)  $\frac{\sqrt{3g}}{r}$

(D)  $\frac{g}{r}$

CORRECT OPTION: A

🎥 Watch Free Video Solution on Doubtnut

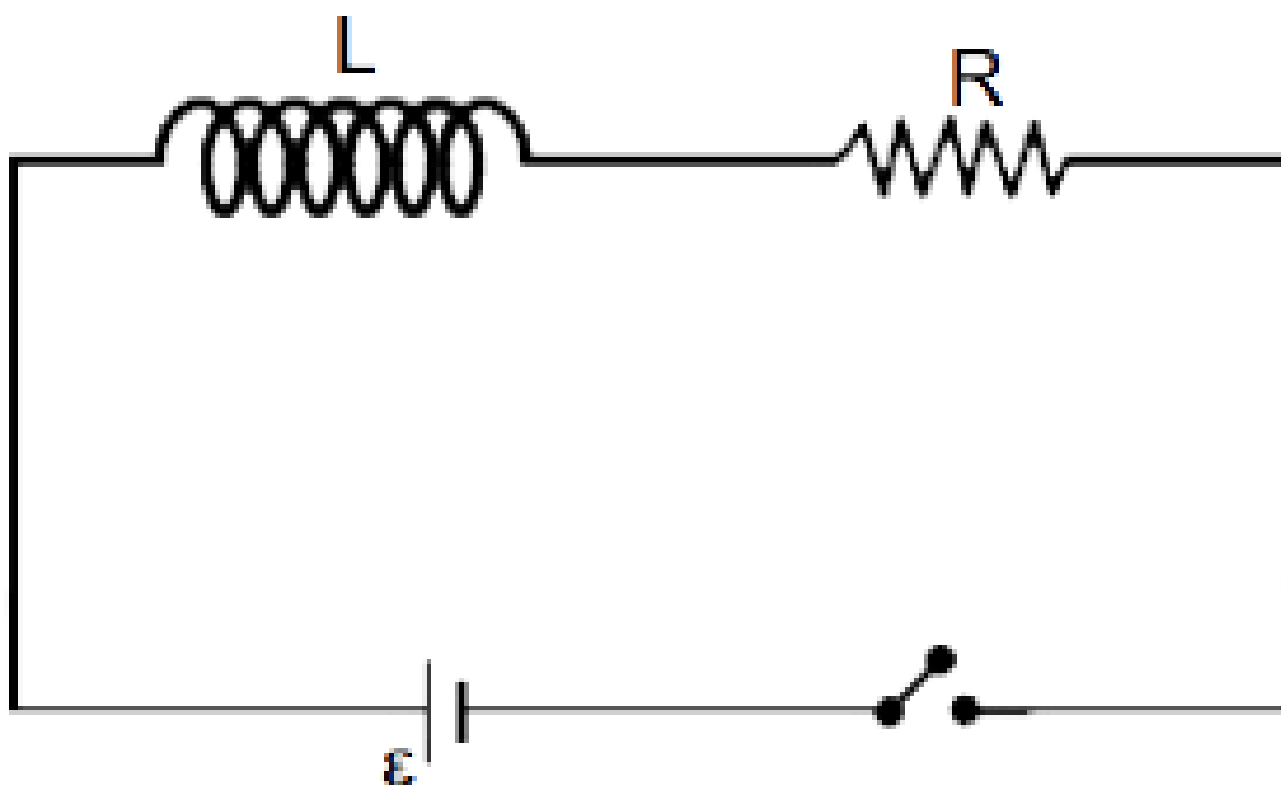


16 - 9677721

JEE MAINS 12 APRIL 2019 - PAPER 1 SHIFT 2 - MEMORY BASED - PHYSICS

The switch shown in figure is closed at  $t = 0$  find the charge throuh battery till time  $t = \frac{L}{R}$





- (A)  $\frac{L_{\varepsilon}}{eR^2}$
- (B)  $\frac{L_{\varepsilon}}{2eR^2}$
- (C)  $\frac{2L_{\varepsilon}}{eR^2}$
- (D) None

---

**CORRECT OPTION: A**

[📺 Watch Free Video Solution on Doubtnut](#)

The ratio of wavelenghts of photons emitted when hydrogen atom de-excites from third excited state to second excited state then de-excites form second excited state to first excited state is :

(A)  $\frac{7}{20}$

(B)  $\frac{20}{7}$

(C) 5

(D) 20

---

**CORRECT OPTION: B**

[© Watch Free Video Solution on Doubtnut](#)

18 - 9677724

**JEE MAINS 12 APRIL 2019 - PAPER 1 SHIFT 2 -  
MEMORY BASED - PHYSICS**

Two planets of radii  $R_1$  and  $R_2$  have masses  $m_1$  and  $M_2$  such that  $\frac{M_1}{M_2} = \frac{1}{g}$ . The weight of an object on these

planets is  $w_1$  and  $w_2$  such that  $\frac{w_1}{w_2} = \frac{4}{9}$ . The ratio  $\frac{R_1}{R_2}$

(A) 2

(B)  $\frac{1}{2}$

(C) 4

(D)  $\frac{1}{4}$

---

**CORRECT OPTION: B**

[📺 Watch Free Video Solution on Doubtnut](#)

19 - 9677725

**JEE MAINS 12 APRIL 2019 - PAPER 1 SHIFT 2 -  
MEMORY BASED - PHYSICS**

A solid sphere of radius  $R$  has total charge  $2Q$  and volume charge density  $p = kr$  where  $r$  is distance from centre.

Now charges  $Q$  and  $-Q$  are placed diametrically opposite at distance  $2a$  where  $a$  is distance from centre of sphere such that net force on charge  $Q$  is zero then relation

between  $a$  and  $R$  is

(A)  $a = R/2$

(B)  $a = R$

(C)  $a = 2R$

(D)  $a = 3R/4$

---

**CORRECT OPTION: A**

[📺 Watch Free Video Solution on Doubtnut](#)

20 - 9677726

**JEE MAINS 12 APRIL 2019 - PAPER 1 SHIFT 2 -  
MEMORY BASED - PHYSICS**

A cylinder of length  $l$  and radius  $r$  is heated to temperature  $T$ . A longitudinal compressive force  $F$  is applied on cylinder to keep its length same. Find coefficient of volume expansion.

(A)  $\frac{F}{Yt\pi r^2}$

(B)  $\frac{3F}{Yt\pi r^2}$

(C)  $\frac{2F}{Yt\pi r^2}$

(D) None of these

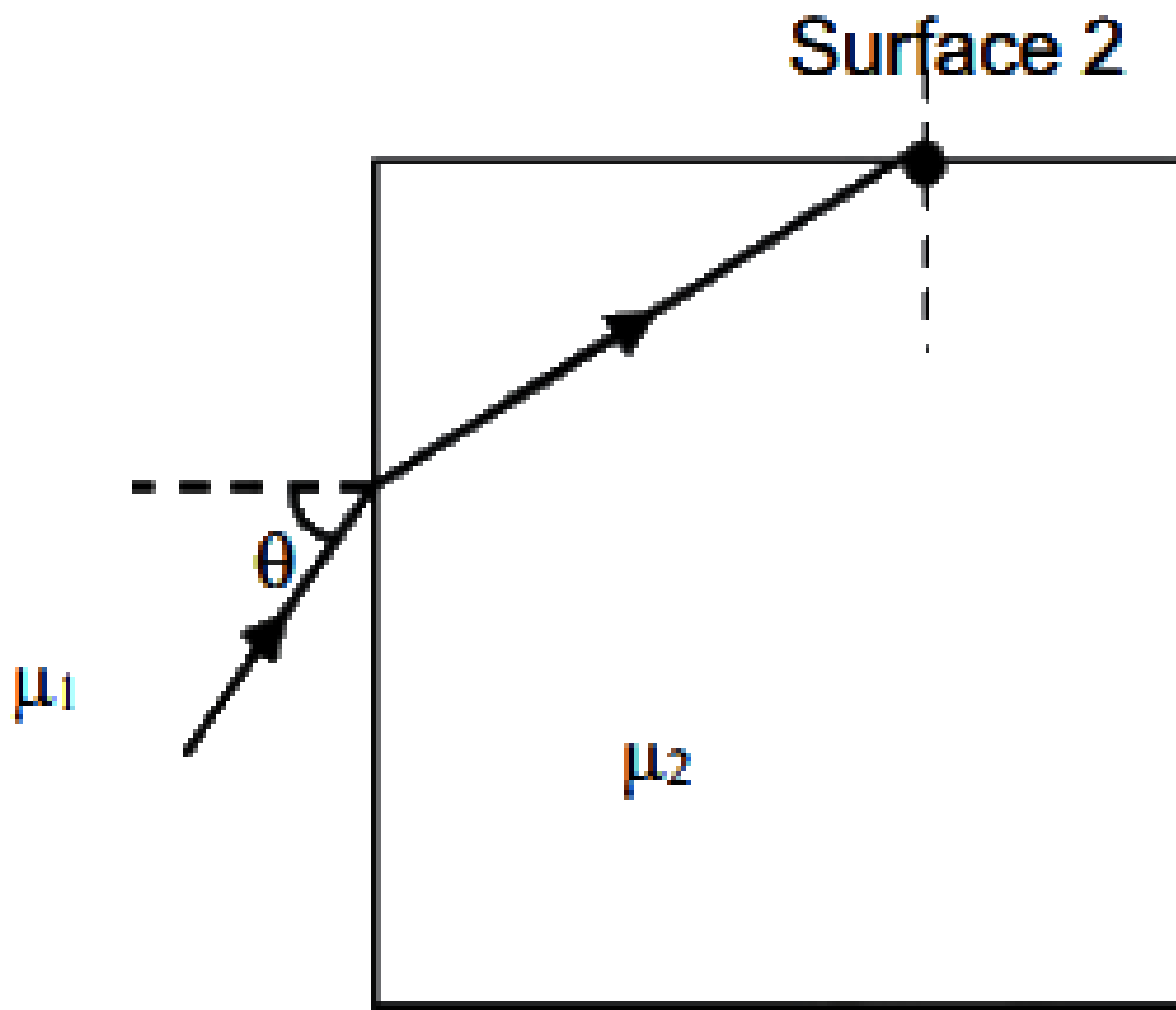
---

**CORRECT OPTION: B**

[© Watch Free Video Solution on Doubtnut](#)

21 - 9677727

**JEE MAINS 12 APRIL 2019 - PAPER 1 SHIFT 2 -  
MEMORY BASED - PHYSICS**



Find condition for *TIR* at surface 2.

- (A)  $\theta < \sin^{-1} \sqrt{\left(\frac{\mu_2}{\mu_1}\right)^2 - 1}$
- (B)  $\theta > \sin^{-1} \sqrt{\left(\frac{\mu_2}{\mu_1}\right)^2 - 1}$
- (C)  $\theta < \frac{\sin^{-1}(\mu_2)}{\mu_1}$
- (D)  $\theta > \frac{\sin^{-1}(\mu_2)}{\mu_1}$

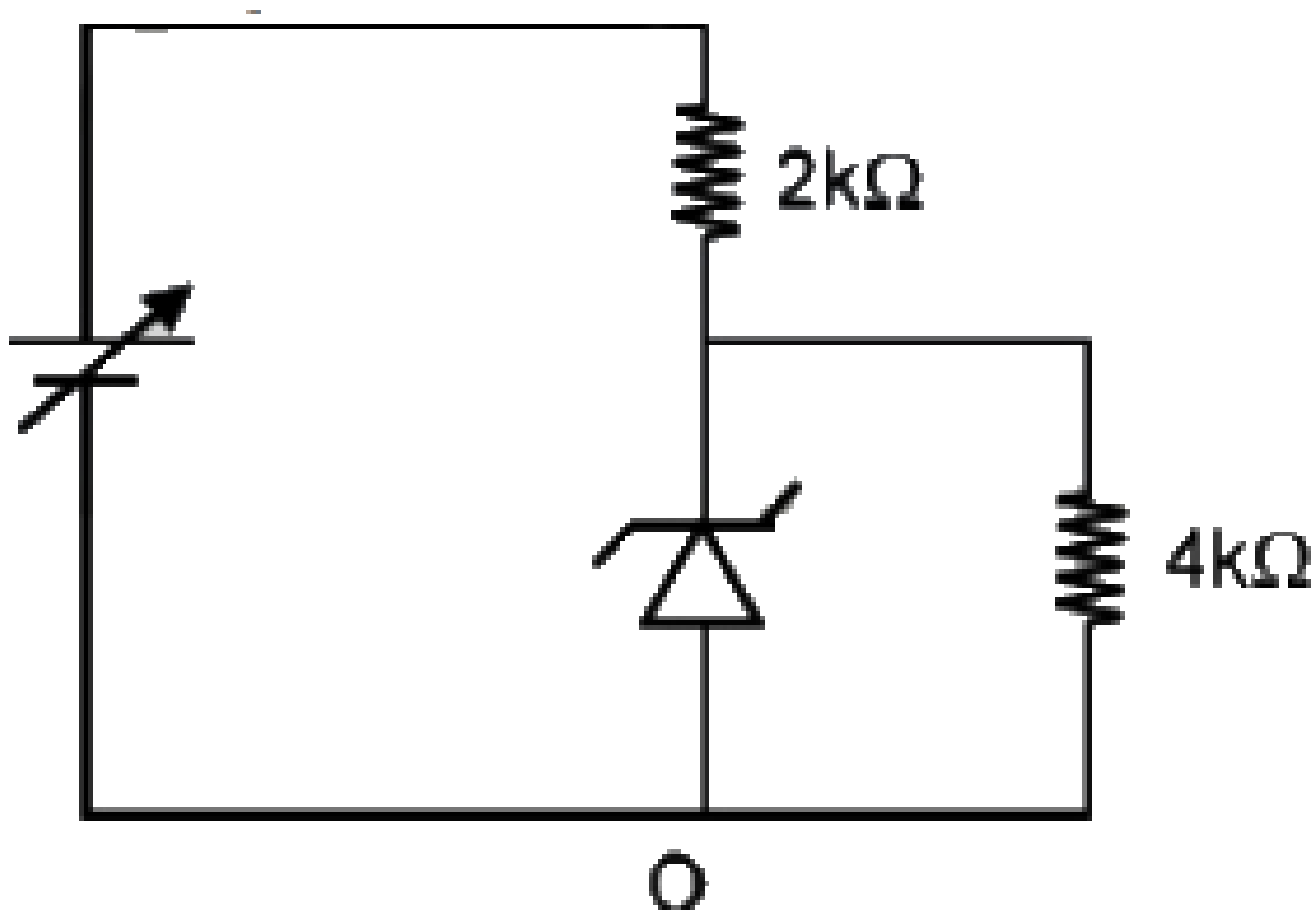
---

**CORRECT OPTION: A**

22 - 9677728

## JEE MAINS 12 APRIL 2019 - PAPER 1 SHIFT 2 - MEMORY BASED - PHYSICS

For the given circuit shown in figure, the potential of the battery is varied from  $10V$  to  $16V$ . If by zener diode breakdown voltage is  $6V$  find maximum current through zener diode



(A)  $1.5mA$

(B)  $3.5mA$

(C)  $5mA$

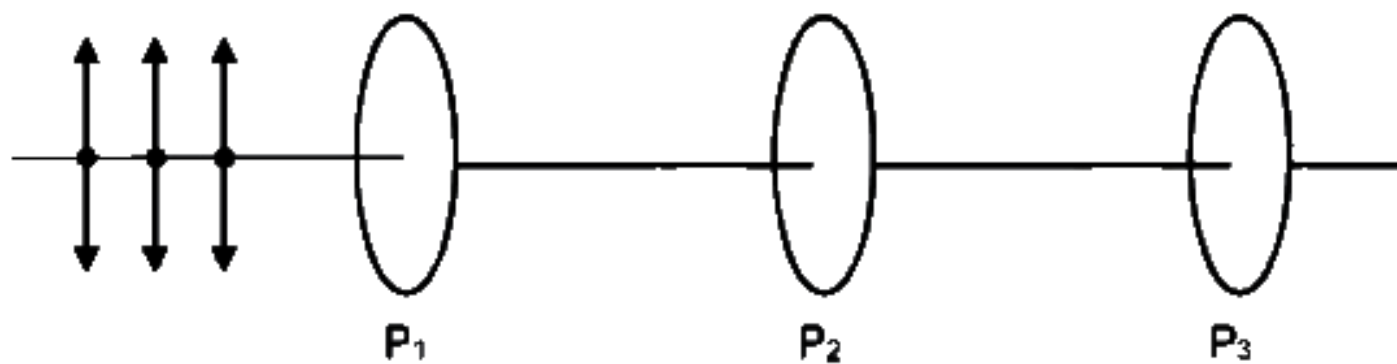
(D)  $6.5mA$

**CORRECT OPTION: B**

[📺 Watch Free Video Solution on DoubtNut](#)

23 - 9677729

**JEE MAINS 12 APRIL 2019 - PAPER 1 SHIFT 2 -  
MEMORY BASED - PHYSICS**



Unpolarised light beam of intensity  $I_0$  is incident on polaroid  $P_1$ . The three polaroids are arranged in such a way that transmission axis of  $P_1$  and  $P_3$  are perpendicular to each other. Angle between the transmission axis of  $P_2$  and  $P_3$  is  $60^\circ$ . The intensity of the beam coming out from  $P_3$  will be:



- (A)  $\frac{I_0}{2}$
- (B)  $\frac{3I_0}{8}$
- (C)  $\frac{3I_0}{32}$
- (D)  $\frac{3I_0}{64}$

**CORRECT OPTION: C**

[▶ Watch Free Video Solution on Doubtnut](#)



24 - 9677730

## JEE MAINS 12 APRIL 2019 - PAPER 1 SHIFT 2 - MEMORY BASED - PHYSICS

Two radioactive samples 1 and 2 have equal number of nuclei initially. They have half-lives of 10 seconds and 20

seconds. The ratio of number of nuclei of 1 and 2 at  $t = 60$  seconds is :

(A) 8 : 1

(B) 1 : 8

(C) 3 : 8

(D) 1 : 9

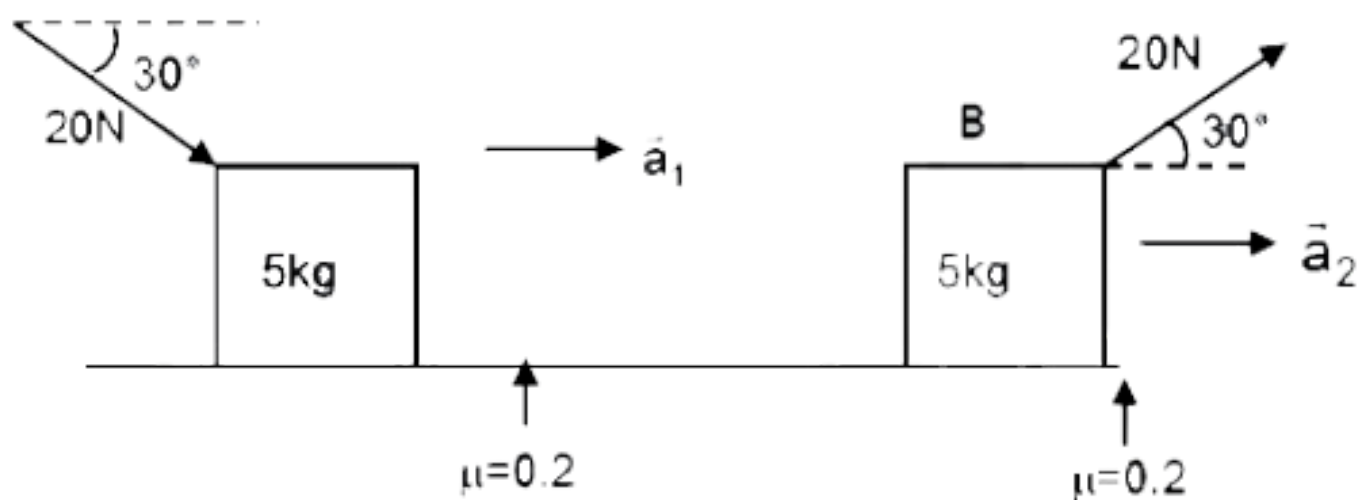
---

**CORRECT OPTION: B**

[📺 Watch Free Video Solution on Doubtnut](#)

25 - 9677731

**JEE MAINS 12 APRIL 2019 - PAPER 1 SHIFT 2 -  
MEMORY BASED - PHYSICS**

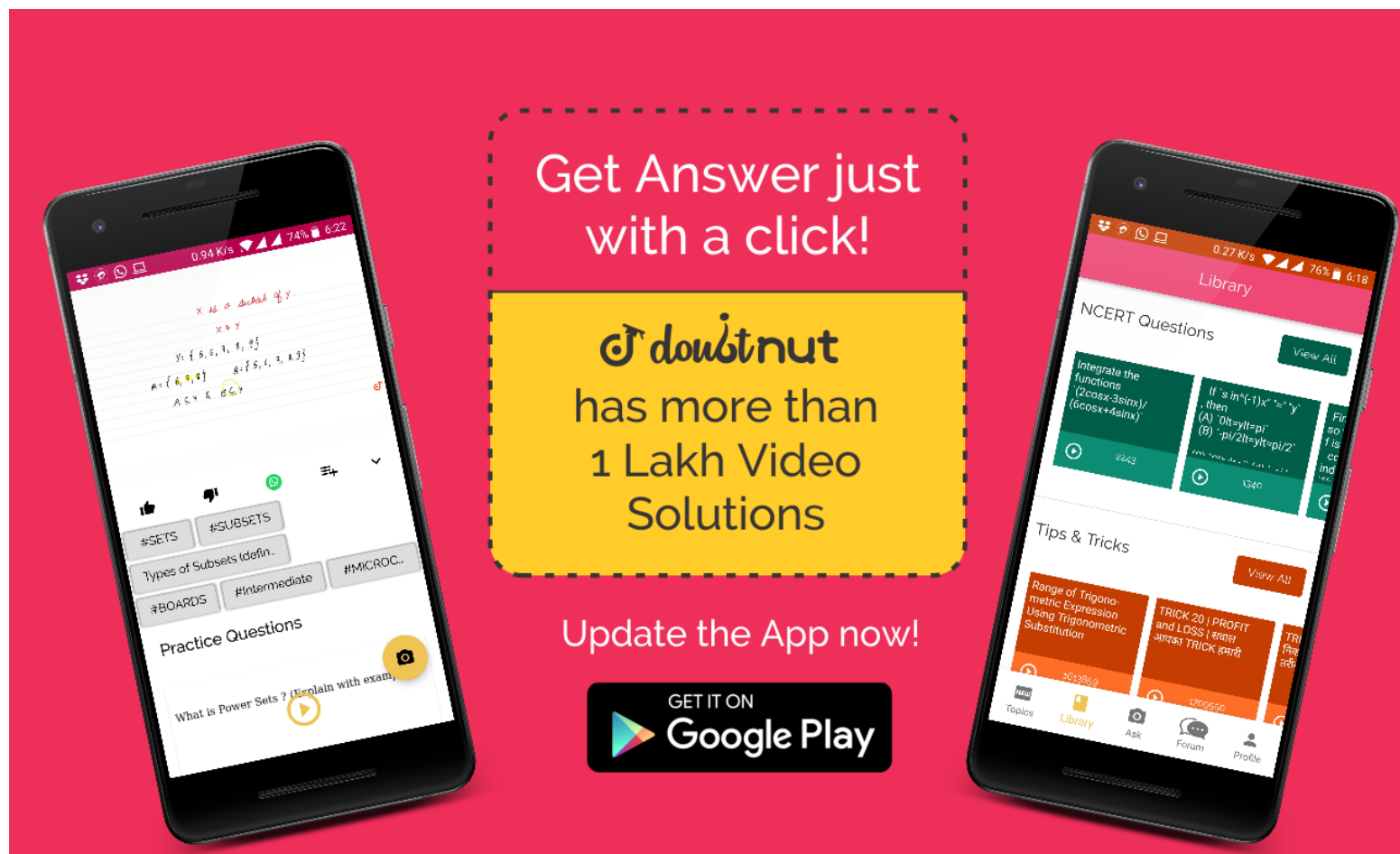


Two blocks  $A$  and  $B$  are being accelerated by forces shown in figure with accelerations  $\vec{a}_1$  and  $\vec{a}_2$  respectively. The value of  $|\vec{a}_1 - \vec{a}_2|$


- (A)  $\frac{4}{5}$   
 (B)  $\frac{8}{5}$   
 (C)  $\frac{4}{5}$   
 (D)  $\frac{8}{5}$

**CORRECT OPTION: A::B::C**


📺 [Watch Free Video Solution on Doubtnut](#)



Get Answer just with a click!

 **doubtnut**  
has more than  
1 Lakh Video  
Solutions

Update the App now!

GET IT ON  
 **Google Play**

The advertisement features two smartphones displaying the Doubtnut app interface. The left phone shows a handwritten math problem: "x is a subset of y. x = {1, 2, 3, 4, 5}, y = {1, 2, 3, 4, 5, 6, 7, 8, 9, 10}. Find the power set of x." Below the problem are buttons for "#SETS", "#SUBSETS", "#BOARDS", "#Intermediate", and "#MICROC...". The right phone shows the "Library" section with "NCERT Questions" and "Tips & Tricks" categories. The "NCERT Questions" section includes a question about integrating functions: "Integrate the functions (2cosx-3sinx)/(6cosx+4sinx)". The "Tips & Tricks" section includes a "TRICK 20 | PROFIT and LOSS | रफ़्त और हानि का ट्रिक" (TRICK 20 | PROFIT and LOSS | रफ़्त और हानि का ट्रिक).