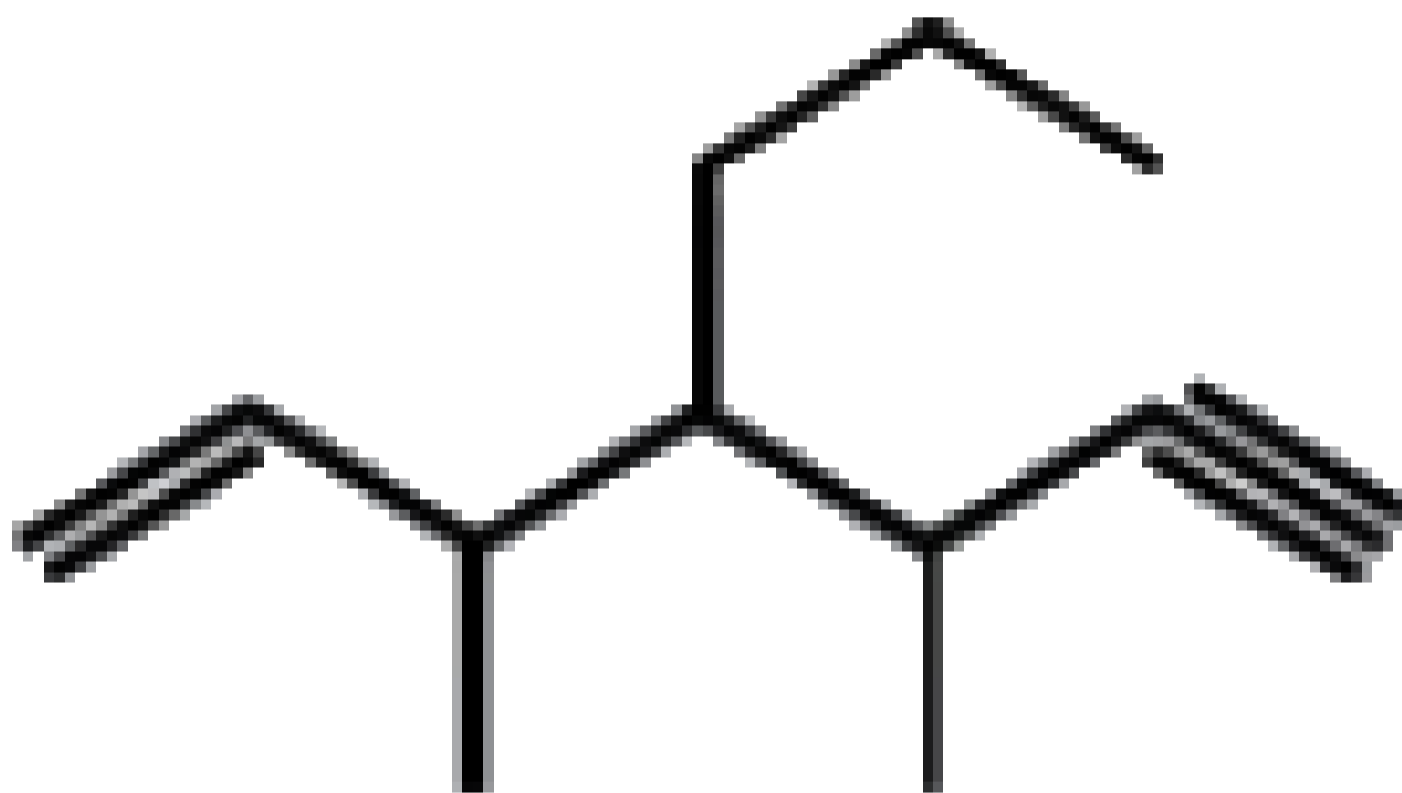


Ques No.

Question

1 - 9677732

**JEE MAINS 12 APRIL 2019 - PAPER 1 SHIFT 2 -
MEMORY BASED - CHEMISTRY**

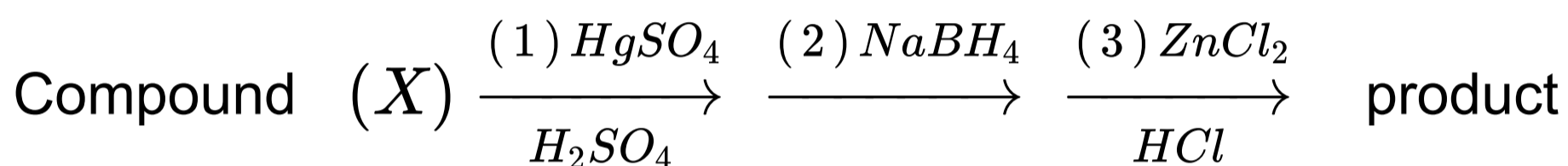
IUPAC name of is:

- (A) 3,4-Dimethyl-4-propylhept-1-en-6-yne
(B) 3,5-Dimethyl-4-propylhept-1-en-6-yne
(C) 3,4-Dimethyl-4-propylhept-6-en-1-yne
(D) 4-propyl-3,5-dimethylhept-1-en-6-yne

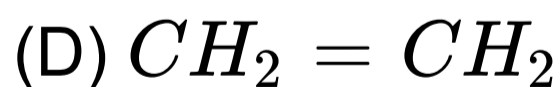
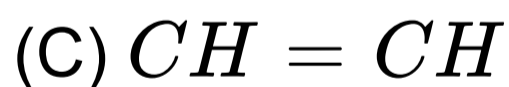
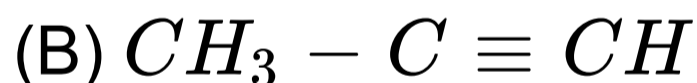
CORRECT OPTION: B

[📺 Watch Free Video Solution on Doubtnut](#)

**JEE MAINS 12 APRIL 2019 - PAPER 1 SHIFT 2 -
MEMORY BASED - CHEMISTRY**



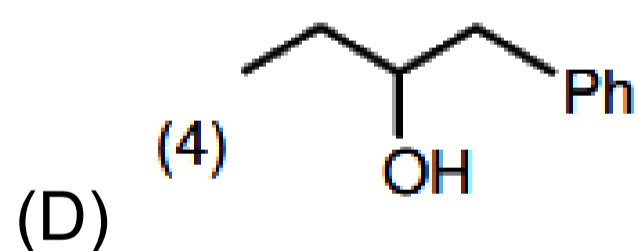
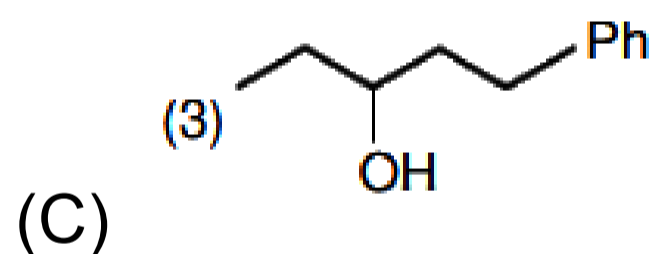
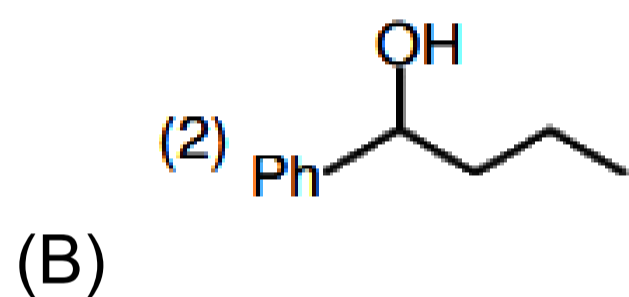
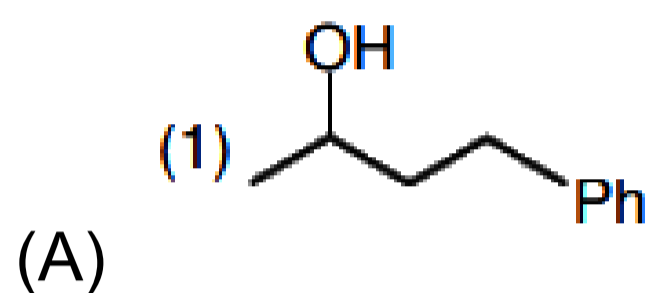
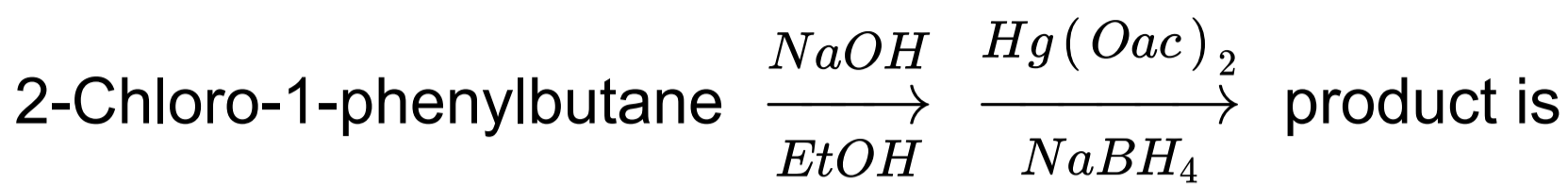
gives precipitate in 5 min. Compound (X) is



CORRECT OPTION: B

[📺 Watch Free Video Solution on Doubtnut](#)

**JEE MAINS 12 APRIL 2019 - PAPER 1 SHIFT 2 -
MEMORY BASED - CHEMISTRY**



CORRECT OPTION: B

[© Watch Free Video Solution on Doubtnut](#)

MEMORY BASED - CHEMISTRY

Which of the following cause photochemical smog?

(A) O_3

(B) CO_2

(C) SO_2

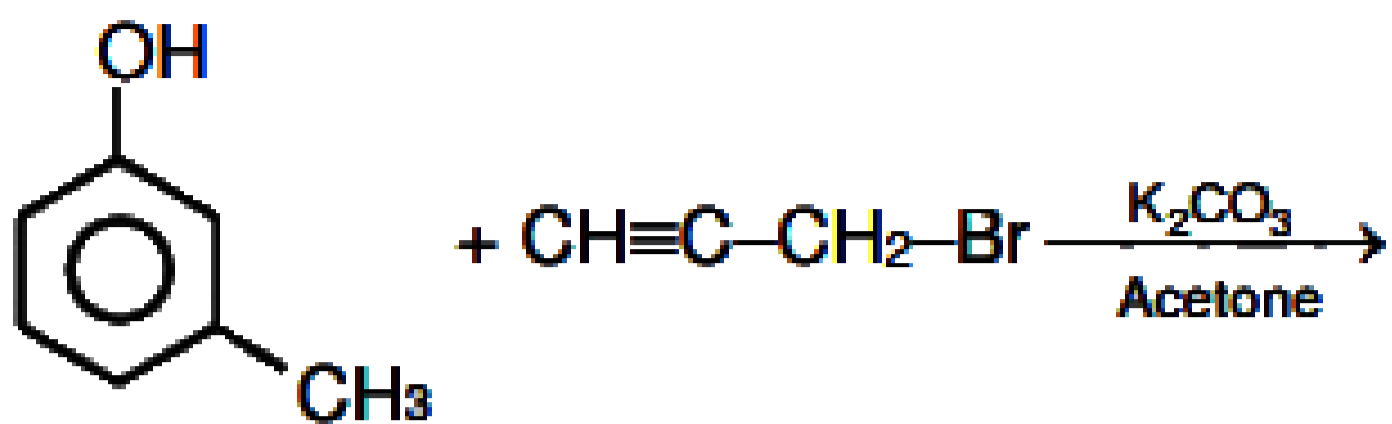
(D) NO_2

CORRECT OPTION: D

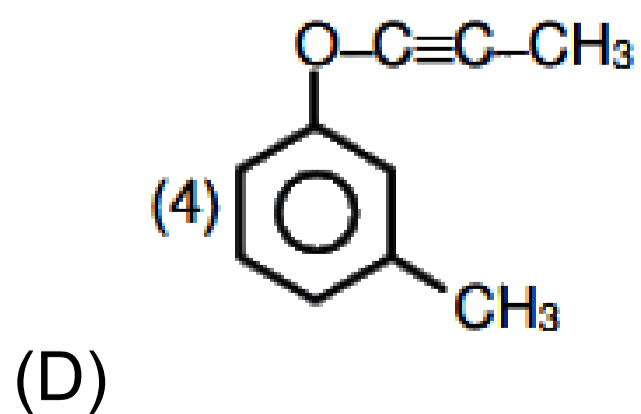
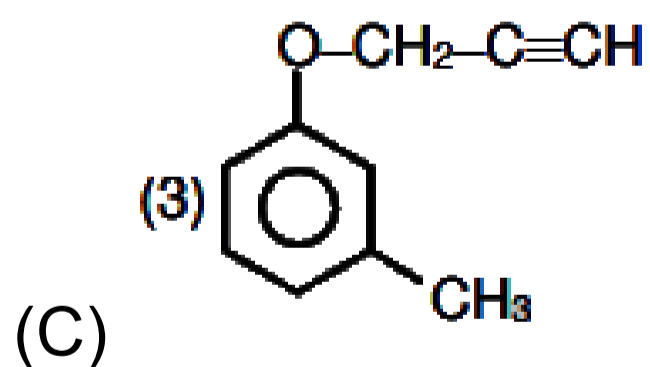
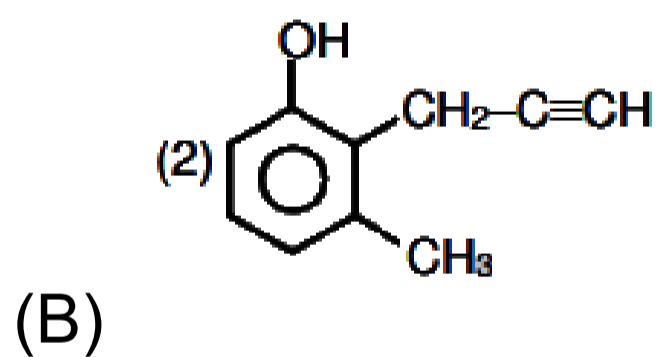
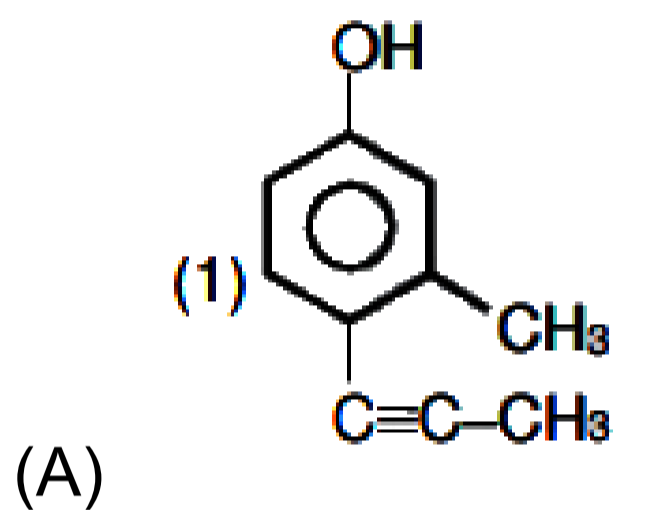
[📺 Watch Free Video Solution on Doubtnut](#)

5 - 9677737

**JEE MAINS 12 APRIL 2019 - PAPER 1 SHIFT 2 -
MEMORY BASED - CHEMISTRY**



$+ CH \equiv C - CH_2 - Br \xrightarrow[\text{acetone}]{K_2CO_3}$ product is

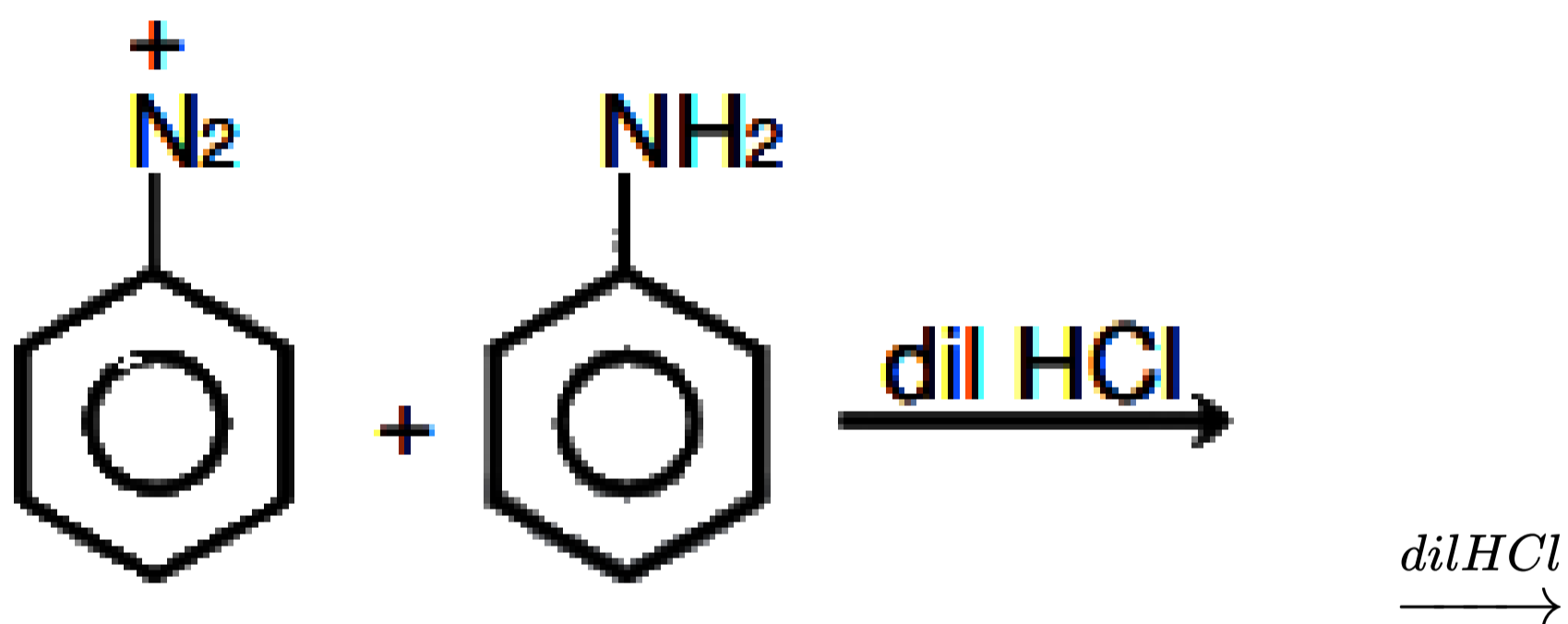


CORRECT OPTION: C

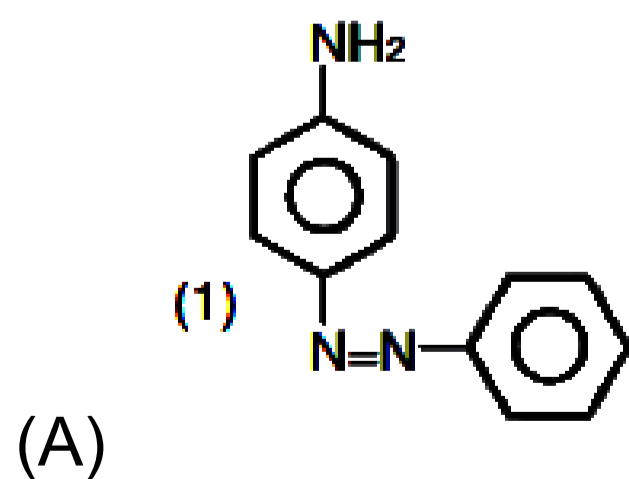
[Watch Free Video Solution on Doubtnut](#)

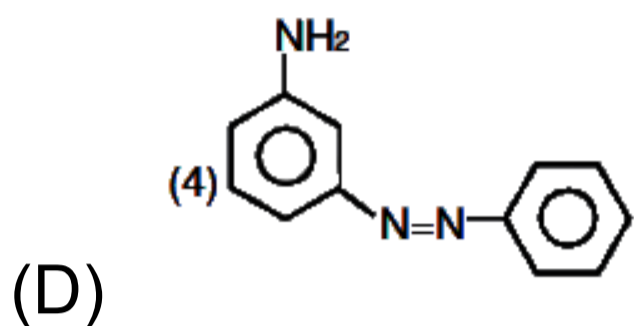
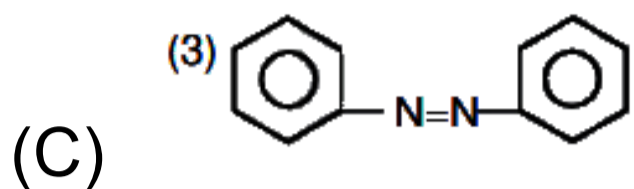
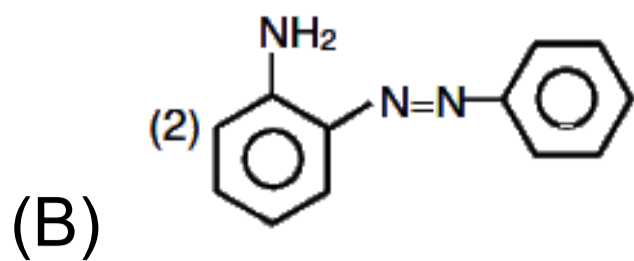
6 - 9677738

**JEE MAINS 12 APRIL 2019 - PAPER 1 SHIFT 2 -
MEMORY BASED - CHEMISTRY**



major product is





CORRECT OPTION: A

[Watch Free Video Solution on Doubtnut](#)

7 - 9677739

**JEE MAINS 12 APRIL 2019 - PAPER 1 SHIFT 2 -
MEMORY BASED - CHEMISTRY**

False statement about glycogen is?

(A) Polymeric chain is similar to amylose.

(B) it is found in yeast and fungi

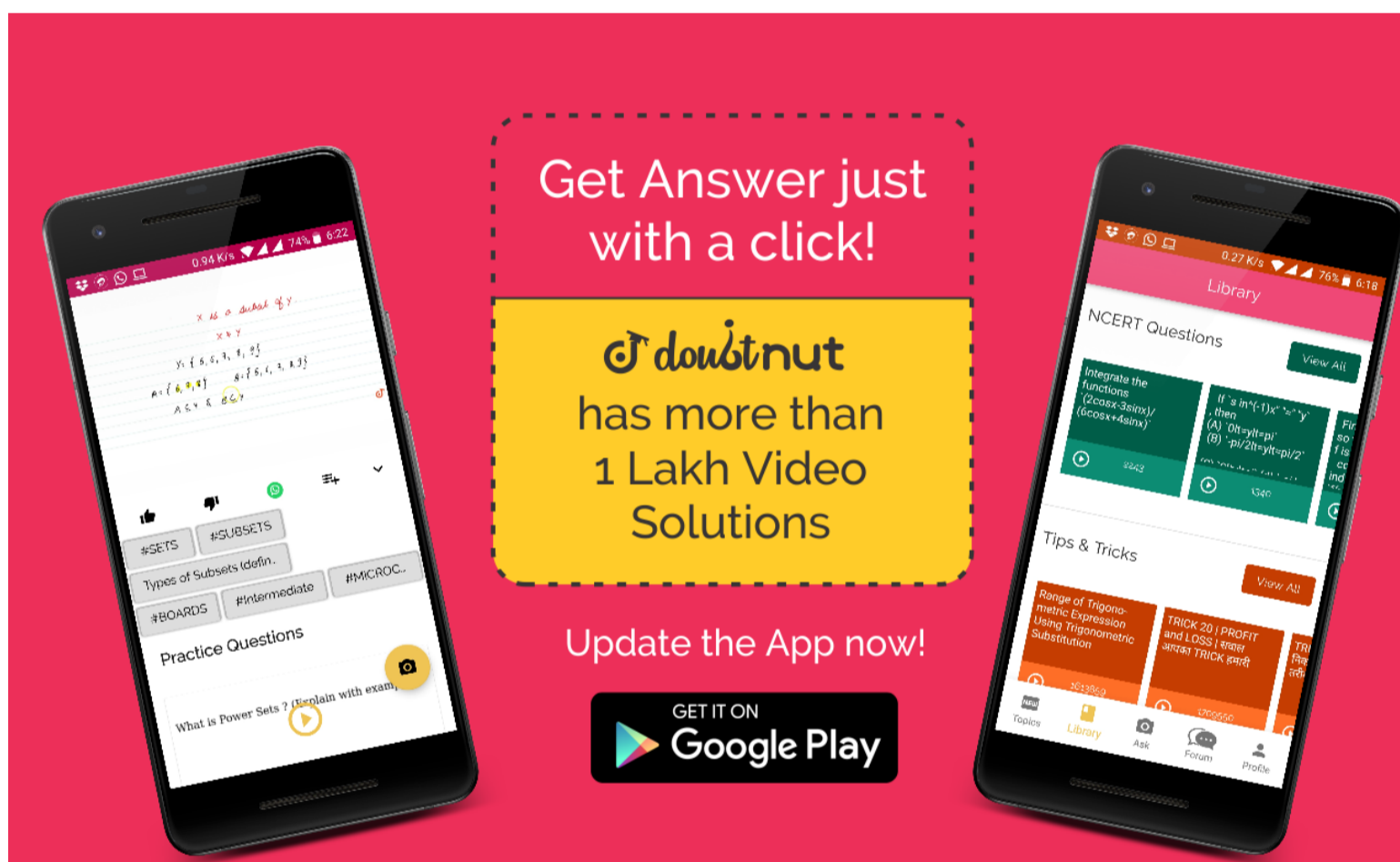
(C) it is found in animal cell.

(D) only α - glycosidic linkages are found

CORRECT OPTION: A

[📺 Watch Free Video Solution on Doubtnut](#)

 **doubtnut**
पढ़ना हुआ आसान



Get Answer just with a click!

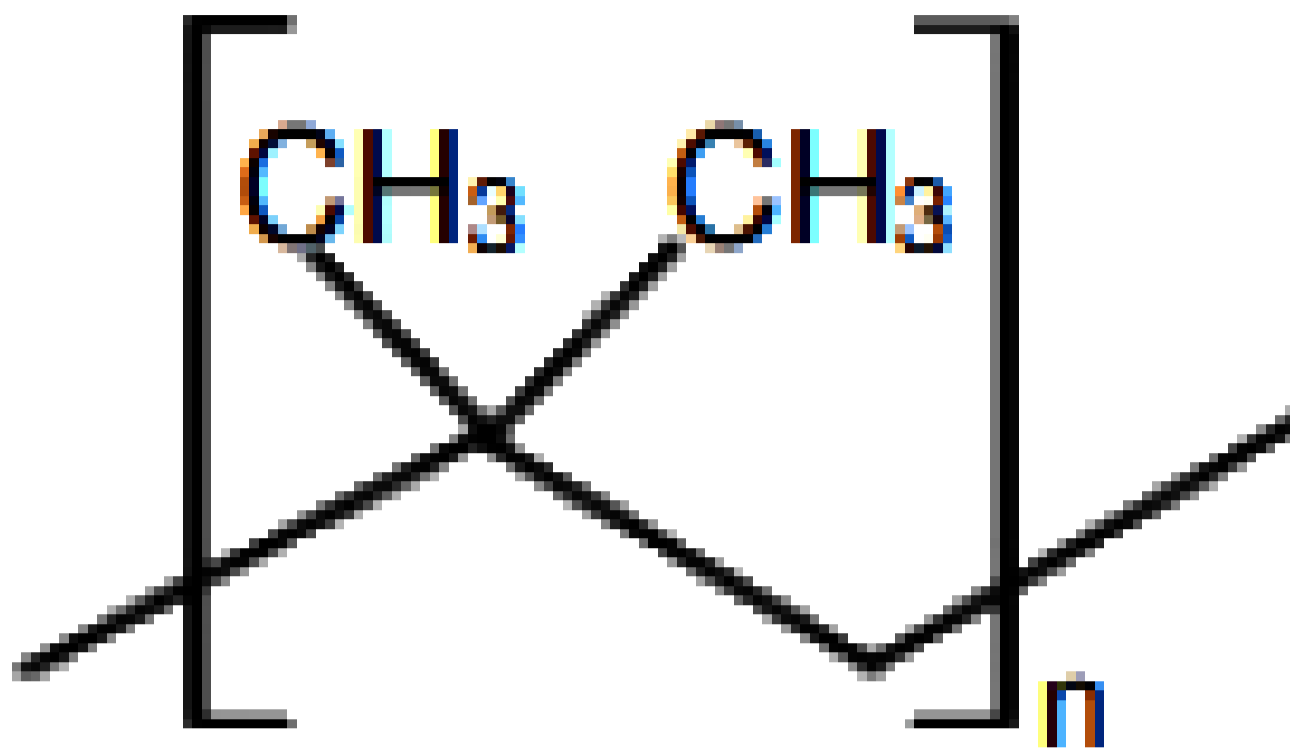
doubtnut
has more than
1 Lakh Video
Solutions

Update the App now!

GET IT ON
Google Play

8 - 9677740

**JEE MAINS 12 APRIL 2019 - PAPER 1 SHIFT 2 -
MEMORY BASED - CHEMISTRY**

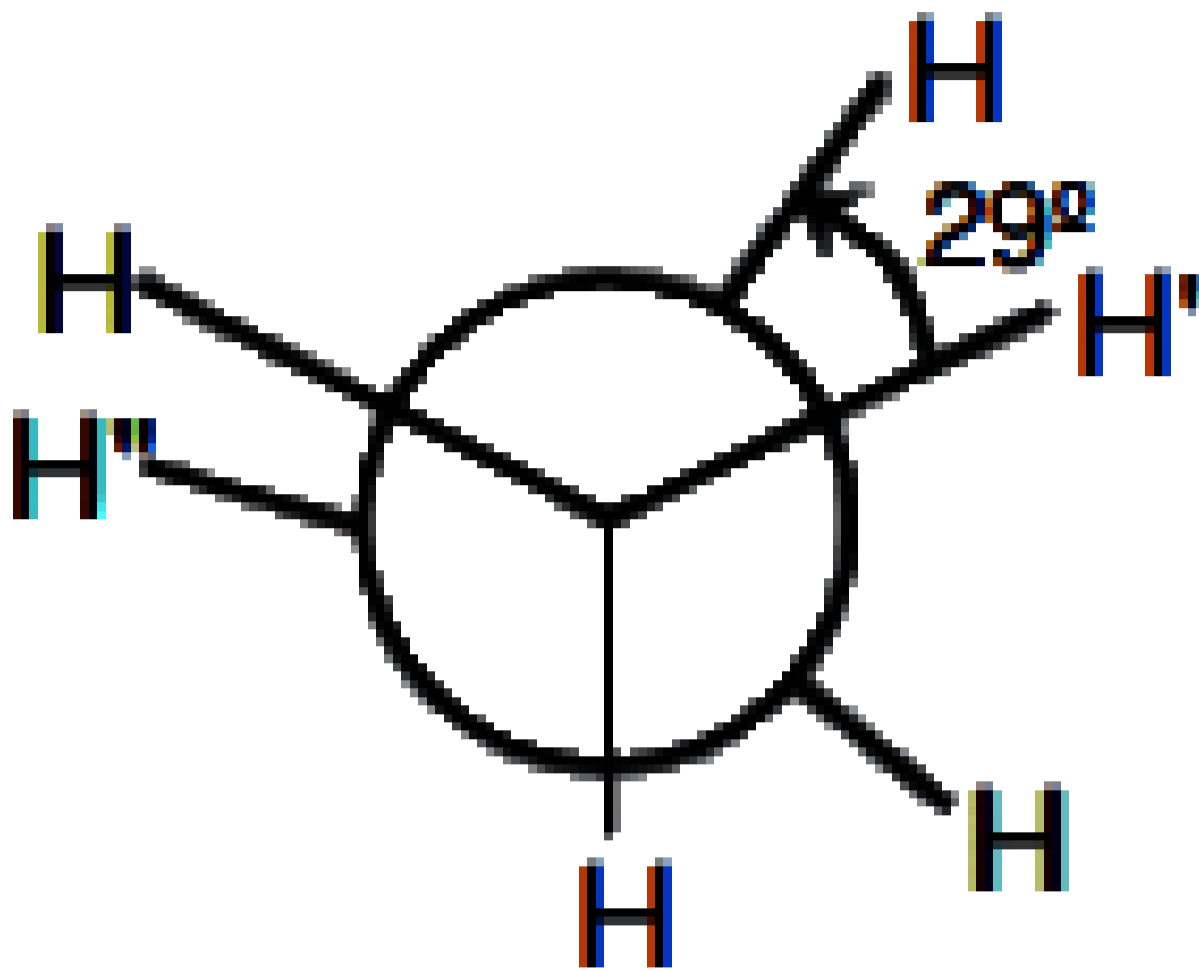


Polymer is names as:

- (A) Poly isobutylene
- (B) Ply tert-butylene
- (C) Poly isobutane
- (D) Poly isopropylene

CORRECT OPTION: A

[© Watch Free Video Solution on Doubtnut](#)



Find the dihedral angle between H' and H'' in given structure

- (A) 58
- (B) 29
- (C) 151
- (D) 149

CORRECT OPTION: D

10 - 9677742

**JEE MAINS 12 APRIL 2019 - PAPER 1 SHIFT 2 -
MEMORY BASED - CHEMISTRY**

Assertion: Vinyl halides do not undergo substitution reaction.

Reason: Although the cation is stabilised by loosely bound π -electron cloud, it least occurs due to high bond strength.

- (A) Both assertion and reason are true and reason is the correct explanation of assertion.
- (B) Both assertion and reason are true but reason is not correct explanation of assertion
- (C) Assertion is true but reason is false.
- (D) Assertion is false but reason is true.

CORRECT OPTION: C

**JEE MAINS 12 APRIL 2019 - PAPER 1 SHIFT 2 -
MEMORY BASED - CHEMISTRY**

The longest C-C bond is present in

(A) graphite

(B) diamond

(C) C_{60}

(D) C_{70}

11 - 9677743

CORRECT OPTION: B

12 - 9677744

**JEE MAINS 12 APRIL 2019 - PAPER 1 SHIFT 2 -
MEMORY BASED - CHEMISTRY**

The correct order of conductivity among (A), (B) and (C) is

(A). 0.1 M HCOOH

(B). 0.1M CH_3 COOH

(C). 0.1M C_6H_5 COOH

(A) $A > B > C$

(B) $A < B < C$

(C) $A > C > B$

(D) $A = B = C$

CORRECT OPTION: C

[📺 Watch Free Video Solution on Doubtnut](#)

13 - 9677745

**JEE MAINS 12 APRIL 2019 - PAPER 1 SHIFT 2 -
MEMORY BASED - CHEMISTRY**

For the reactio $2N_2O_5 \rightarrow 4NO_2 + O_2$

The concentration of N_2O_5 changes from 3.0 M to 2.75 M
in 30 minute. Calculate rate of formation of NO_2

(A) $0.0167 \text{ M min}^{-1}$

(B) 0.167 M min^{-1}

(C) 1.67 M min^{-1}

(D) none of these

CORRECT OPTION: A

[© Watch Free Video Solution on Doubtnut](#)

14 - 9677746

**JEE MAINS 12 APRIL 2019 - PAPER 1 SHIFT 2 -
MEMORY BASED - CHEMISTRY**

25 g hydrocarbon of burning with excess of air produces 88 g CO_2 and 9g water, mass of C and H in the hydrocarbon is

(A) $C = 24g, H = 1g$

(B) $C = 20g, H = 5g$

(C) $C = 18g, H = 7g$

(D) $C = 19g, H = 6g$

CORRECT OPTION: A

[👁 Watch Free Video Solution on Doubtnut](#)

**JEE MAINS 12 APRIL 2019 - PAPER 1 SHIFT 2 -
MEMORY BASED - CHEMISTRY**

In sc, bcc and fcc the ratio of number of atoms per unit cell
is given by

(A) 1 : 2 : 3

(B) 4 : 2 : 1

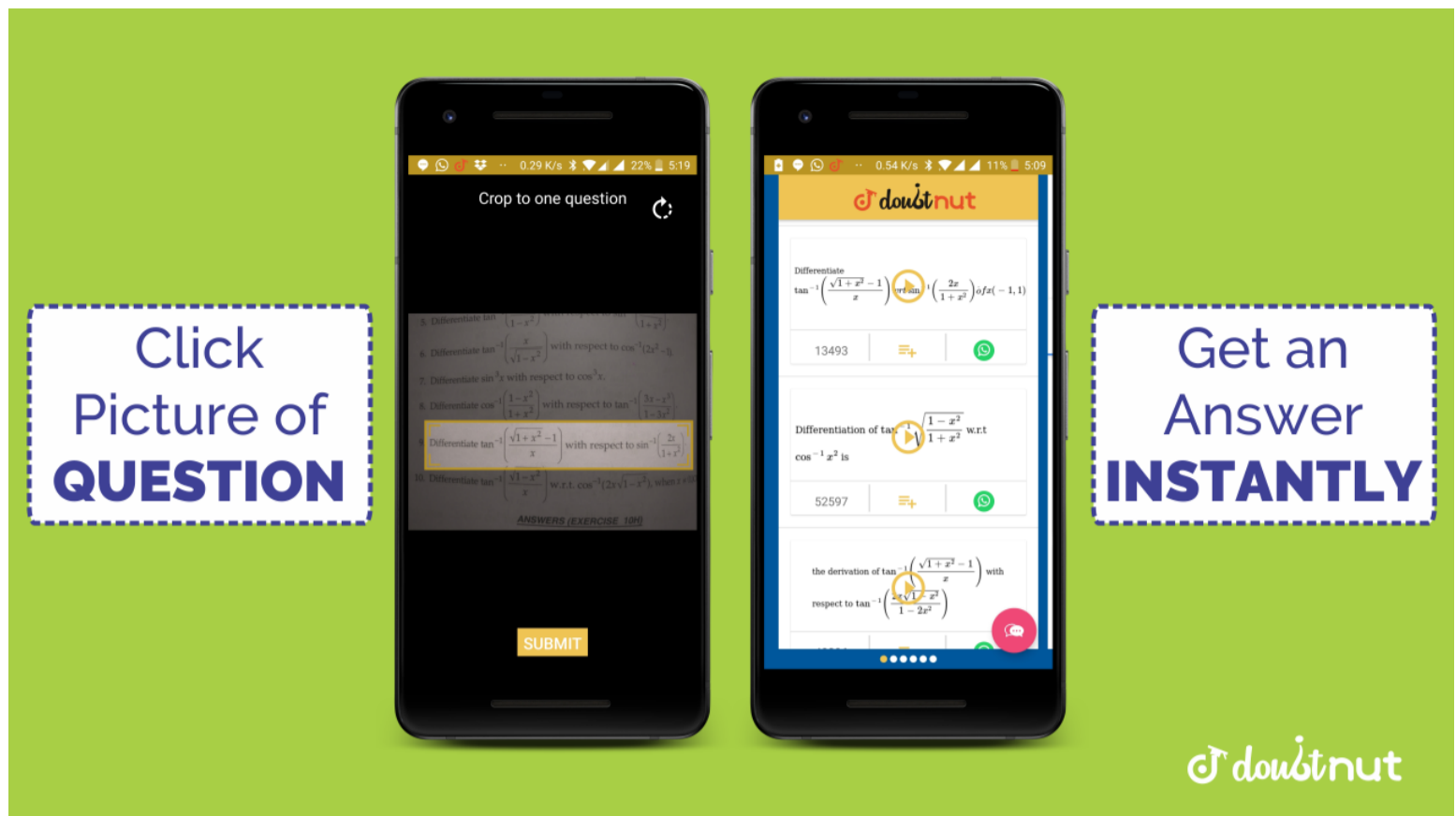
(C) 1 : 2 : 4

(D) 1 : 1 : 3

CORRECT OPTION: C

[👁 Watch Free Video Solution on Doubtnut](#)

15 - 9677747



16 - 9677748

**JEE MAINS 12 APRIL 2019 - PAPER 1 SHIFT 2 -
MEMORY BASED - CHEMISTRY**

Co-ordination number of central atom in $Na_3 [Al(C_2O_4)_3]$
and $[Co(en)_2Cl]Cl$ are:

- (A) 6 and 6
- (B) 6 and 5
- (C) 5 and 5
- (D) 6 and 4

CORRECT OPTION: B

**JEE MAINS 12 APRIL 2019 - PAPER 1 SHIFT 2 -
MEMORY BASED - CHEMISTRY**

Choose the incorrect option,

(A) $\Delta G = 0, K = 1$

(B) $\Delta G > 0, K < 1$

(C) $\Delta G < 0, K > 1$

(D) $\Delta G < 0, K < 1$

17 - 9677749

CORRECT OPTION: D

18 - 9677750

**JEE MAINS 12 APRIL 2019 - PAPER 1 SHIFT 2 -
MEMORY BASED - CHEMISTRY**

In a H-atom an electron is in 2^{nd} excited state and its radius
 $= 4.75\text{\AA}$ calculate the de-broglie wavelength of the

electron

(A) $\frac{8.5}{4} \text{ \AA}$

(B) 0

(C) $\frac{19\pi}{3} \text{ \AA}$

(D) $\frac{9.5\pi}{3} \text{ \AA}$

CORRECT OPTION: D

[📺 Watch Free Video Solution on Doubtnut](#)

19 - 9677751

**JEE MAINS 12 APRIL 2019 - PAPER 1 SHIFT 2 -
MEMORY BASED - CHEMISTRY**

Which of the following elements have same radius?

(A) Sc and Ni

(B) Mo and W

(C) Ti and Hf

(D) Tc and Re

CORRECT OPTION: B

[📺 Watch Free Video Solution on Doubtnut](#)

20 - 9677752

**JEE MAINS 12 APRIL 2019 - PAPER 1 SHIFT 2 -
MEMORY BASED - CHEMISTRY**

A diatomic ideal gas is expanded at constant pressure. If work done by the system is 10 J then calculated heat absorbed.

(A) 40J

(B) 20J

(C) 35J

(D) 15J

CORRECT OPTION: C

[📺 Watch Free Video Solution on Doubtnut](#)

**JEE MAINS 12 APRIL 2019 - PAPER 1 SHIFT 2 -
MEMORY BASED - CHEMISTRY**

6g urea and 1.8g glucose are dissolved in 100 ml H_2O .

What is the osmotic pressure at 300K.

(A) 27.06 atm

(B) 30 atm

(C) 45 atm

(D) 13.07 atm

CORRECT OPTION: A

[📺 Watch Free Video Solution on Doubtnut](#)

21 - 9677753

22 - 9677754

**JEE MAINS 12 APRIL 2019 - PAPER 1 SHIFT 2 -
MEMORY BASED - CHEMISTRY**

Compound X is responsible for temporary hardness. On boiling X gives a precipitate of Y then X & Y are

- (A) $Mg(HCO_3)_2, MgCO_3$
- (B) $Mg(HCO_3)_2, Mg(OH)_2$
- (C) $Ca(HCO_3)_2, Ca(OH)_2$
- (D) $Ca(HCO_3)_2, CaO$

CORRECT OPTION: A

[© Watch Free Video Solution on Doubtnut](#)

23 - 9677755

**JEE MAINS 12 APRIL 2019 - PAPER 1 SHIFT 2 -
MEMORY BASED - CHEMISTRY**

In comparison to B, Be has

- (A) greater nuclear charge, lesser first ionisation energy

(B) lesser nuclear charge, greater ionisation energy

(C) greater nuclear charge, greater first ionization energy

(D) lesser nuclear charge, lesser first ionization energy

CORRECT OPTION: B

[📺 Watch Free Video Solution on Doubtnut](#)

 **doubtnut**
पढ़ना हुआ आसान



Get Solutions as YOU TYPE

Click Here to TYPE & ASK

find the equation of tangent a

Find the equation of tangent to the curve 'x=a(thet...

Find the equation of tangent to the curve 'x=a(th...

Find the equation of tangent to the curve 'y=sin^(-1...

If '3x+y-4' is a tangent to a circle whose center is ...

Find the equation of tangent to 'y=int_(x^2)^(x^3)(...

doubtnut

24 - 9677756

JEE MAINS 12 APRIL 2019 - PAPER 1 SHIFT 2 - MEMORY BASED - CHEMISTRY

Half-life of radio active element A is 30 min while B is 20 min. Calculate ratio of number of nuclei decayed of A B after 60 min

- (A) $\frac{7}{6}$
(B) $\frac{5}{6}$
(C) $\frac{6}{7}$
(D) $\frac{1}{1}$

CORRECT OPTION: C

[© Watch Free Video Solution on Doubtnut](#)

25 - 9677757

**JEE MAINS 12 APRIL 2019 - PAPER 1 SHIFT 2 -
MEMORY BASED - CHEMISTRY**

For which of the following reactio K_p and K_c are not same?

- (A) $H_2(g) + Cl_2(g) \rightleftharpoons 2HCl(g)$
(B) $2SO_3(g) \rightleftharpoons 2SO_2(g) + O_2(g)$
(C) $N_2(g) + O_2(g) \rightleftharpoons 2NO_g$
(D) none of these

CORRECT OPTION: B

[📺 Watch Free Video Solution on Doubtnut](#)

26 - 9677758

**JEE MAINS 12 APRIL 2019 - PAPER 1 SHIFT 2 -
MEMORY BASED - CHEMISTRY**

Solubility of $Cd(OH)_2$ in pure water is 1.84×10^{-5} mole / L . Calculate its solubility in a buffer solution of $pH = 12$.

(A) $2.7 \times 10^{-9} M$

(B) $2.49 \times 10^{-10} M$

(C) 2.7×10^{-11}

(D) $2.7 \times 10^{-12} M$

CORRECT OPTION: B

[📺 Watch Free Video Solution on Doubtnut](#)

**JEE MAINS 12 APRIL 2019 - PAPER 1 SHIFT 2 -
MEMORY BASED - CHEMISTRY**

Which of the following is correct statement?

(A) Hall-Heroult's process is used in the extraction of Aluminium & iron.

(B) Leaching of Bauxite with NaOH produces, sodium meta aluminate and sodium silicate

(C) cast iron is made from Pig Iron.

(D) Blister copper occur due to CO_2

CORRECT OPTION: C

[📺 Watch Free Video Solution on Doubtnut](#)

27 - 9677759

**JEE MAINS 12 APRIL 2019 - PAPER 1 SHIFT 2 -
MEMORY BASED - CHEMISTRY**

28 - 9677760

Which of the following is incorrect statement?

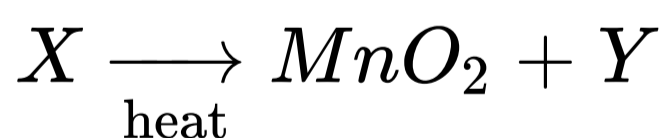
- (A) LiCl forms hydrated salt $\text{LiCl} \cdot 2\text{H}_2\text{O}$
- (B) on heating LiNO_3 gives LiNO_2 and O_2
- (C) Li is strongest reducing agent
- (D) Among alkali metals Li has highest melting point.

CORRECT OPTION: B

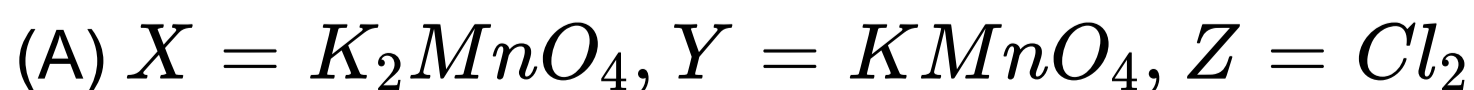
[© Watch Free Video Solution on Doubtnut](#)

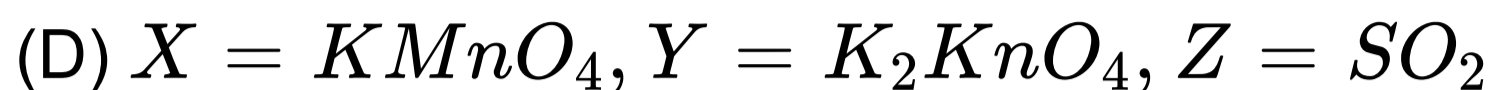
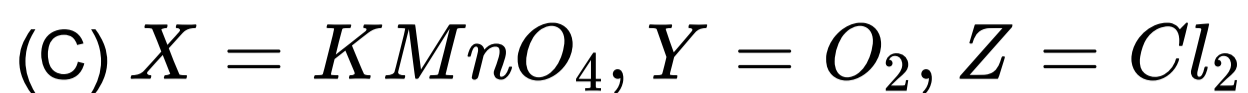
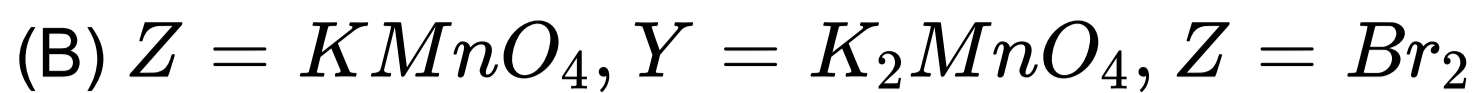
29 - 9677761

**JEE MAINS 12 APRIL 2019 - PAPER 1 SHIFT 2 -
MEMORY BASED - CHEMISTRY**



Identify X, Y and Z





CORRECT OPTION: A

[© Watch Free Video Solution on Doubtnut](#)

30 - 9677762

**JEE MAINS 12 APRIL 2019 - PAPER 1 SHIFT 2 -
MEMORY BASED - CHEMISTRY**

In which of the following energy of 2s orbital minimum

(A) Li

(B) Na

(C) K

(D) H

CORRECT OPTION: C

📺 Watch Free Video Solution on Doubtnut

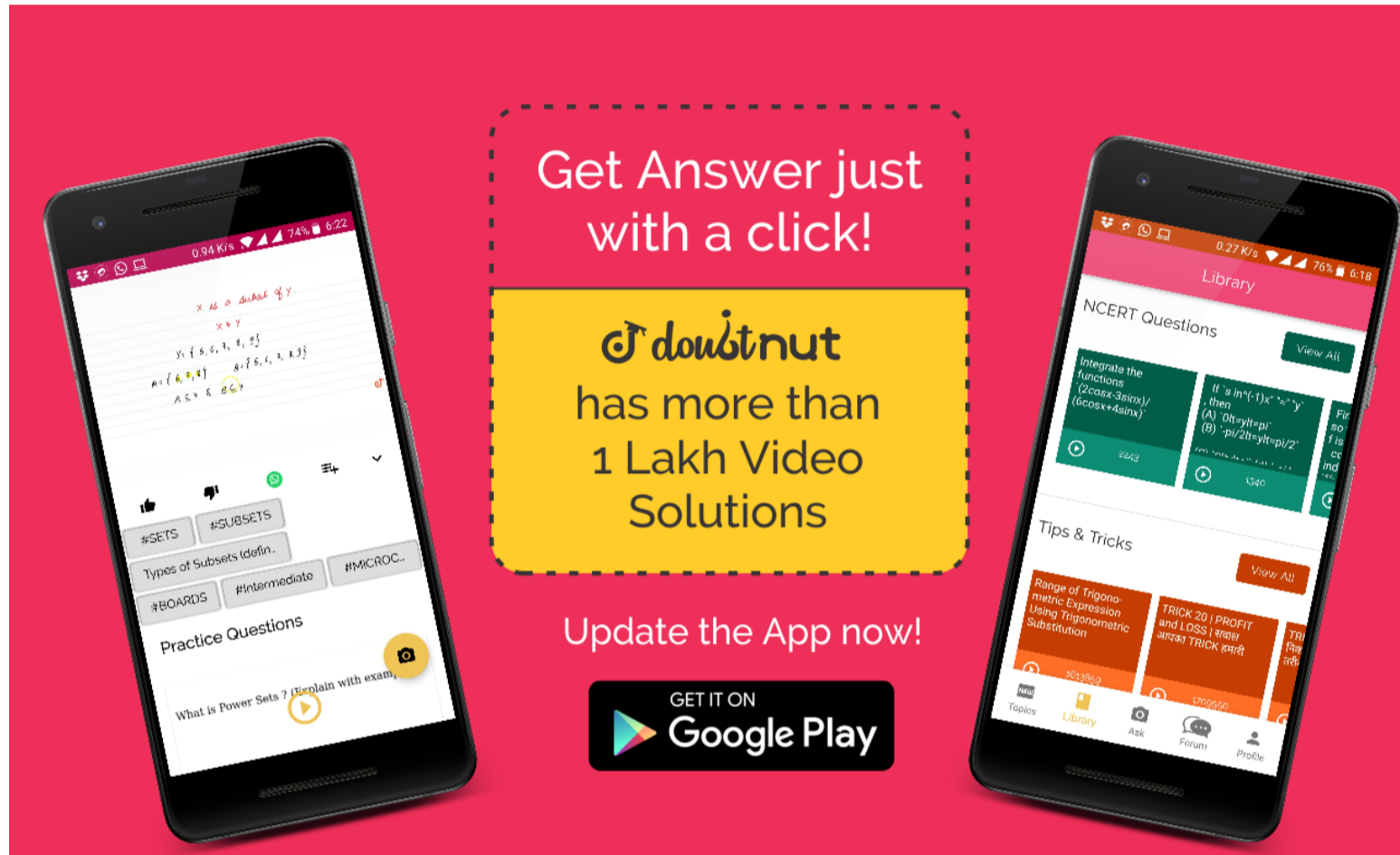
📲 Download Doubtnut to Ask Any Math Question By just a click

📲 Get A Video Solution For Free in Seconds

📲 Doubtnut Has More Than 1 Lakh Video Solutions

📲 Free Video Solutions of NCERT, RD Sharma, RS Aggarwal, Cengage (G.Tewani), Resonance DPP, Allen, Bansal, FIITJEE, Akash, Narayana, VidyaMandir

📲 Download Doubtnut Today



Get Answer just with a click!

doubtnut has more than 1 Lakh Video Solutions

Update the App now!

GET IT ON **Google Play**

The advertisement features two smartphones. The left phone displays a math problem: "x is a subset of y", with handwritten solutions for sets A = {1, 2, 3} and B = {1, 2, 3, 4, 5}. The right phone shows a "Library" screen with "NCERT Questions" and "Tips & Tricks" sections. The central text box is yellow with a dashed border, and the Google Play logo is at the bottom.