

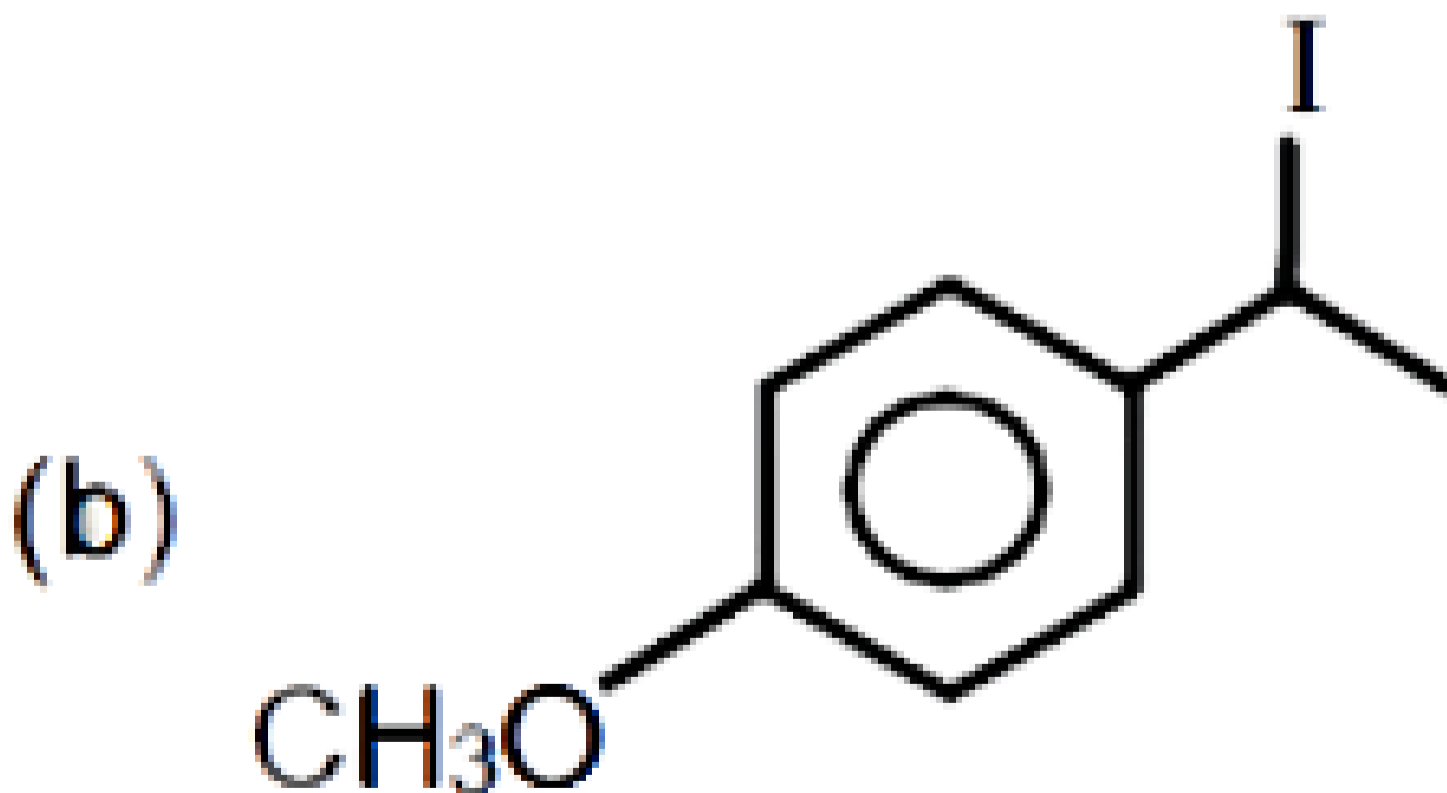
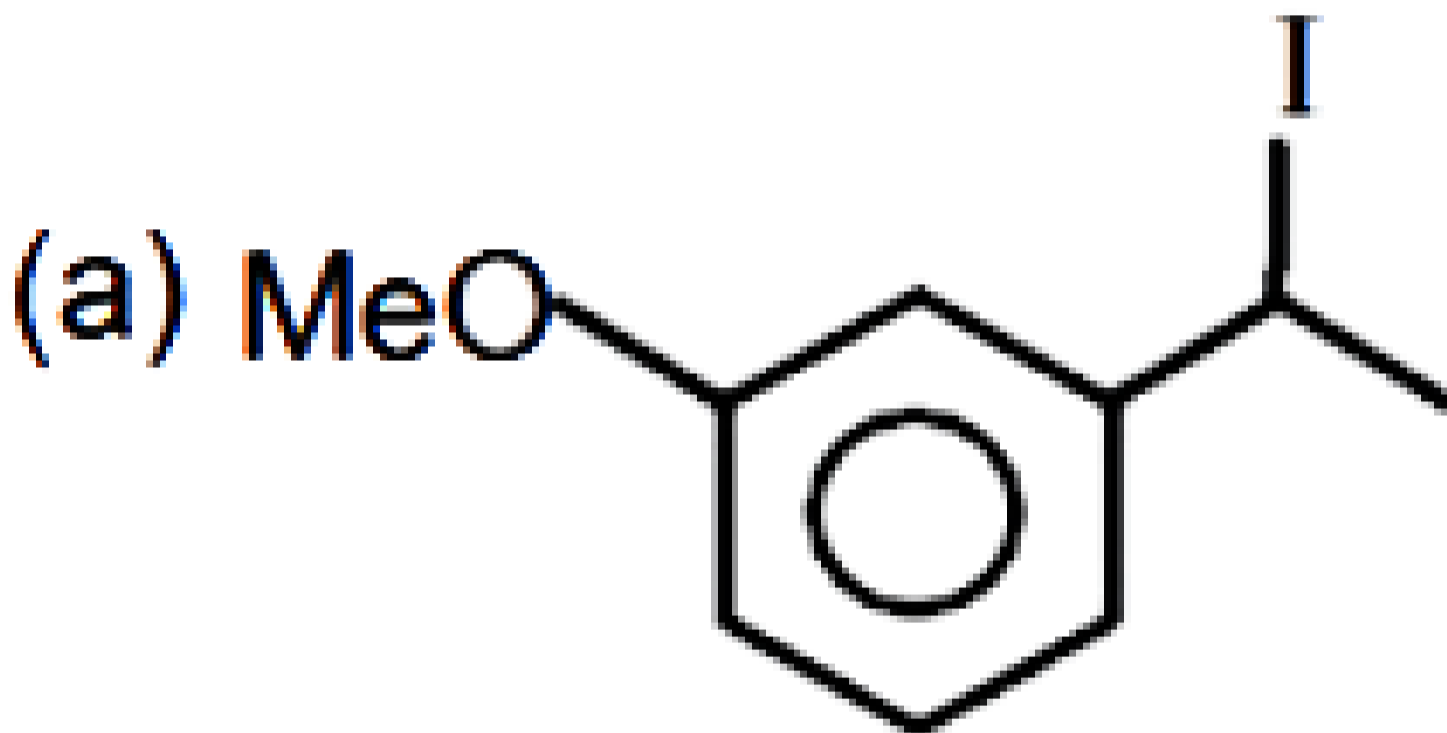
Ques No.

Question

1 - 9486410

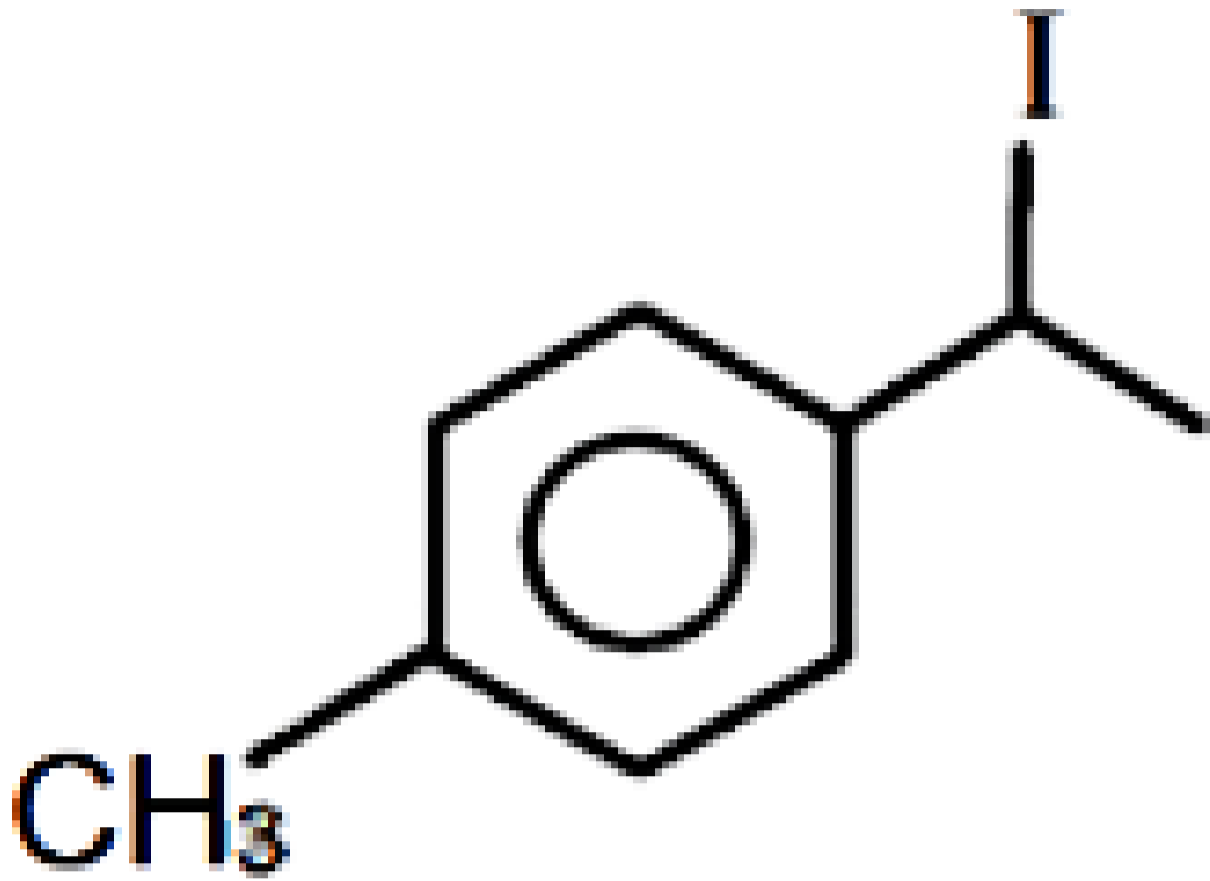
**JEE MAINS 10 APRIL 2019 - PAPER 1 SHIFT 1 -
MEMORY BASED - CHEMISTRY**

Rate of S_N1 reaction for the following compounds is: (a).



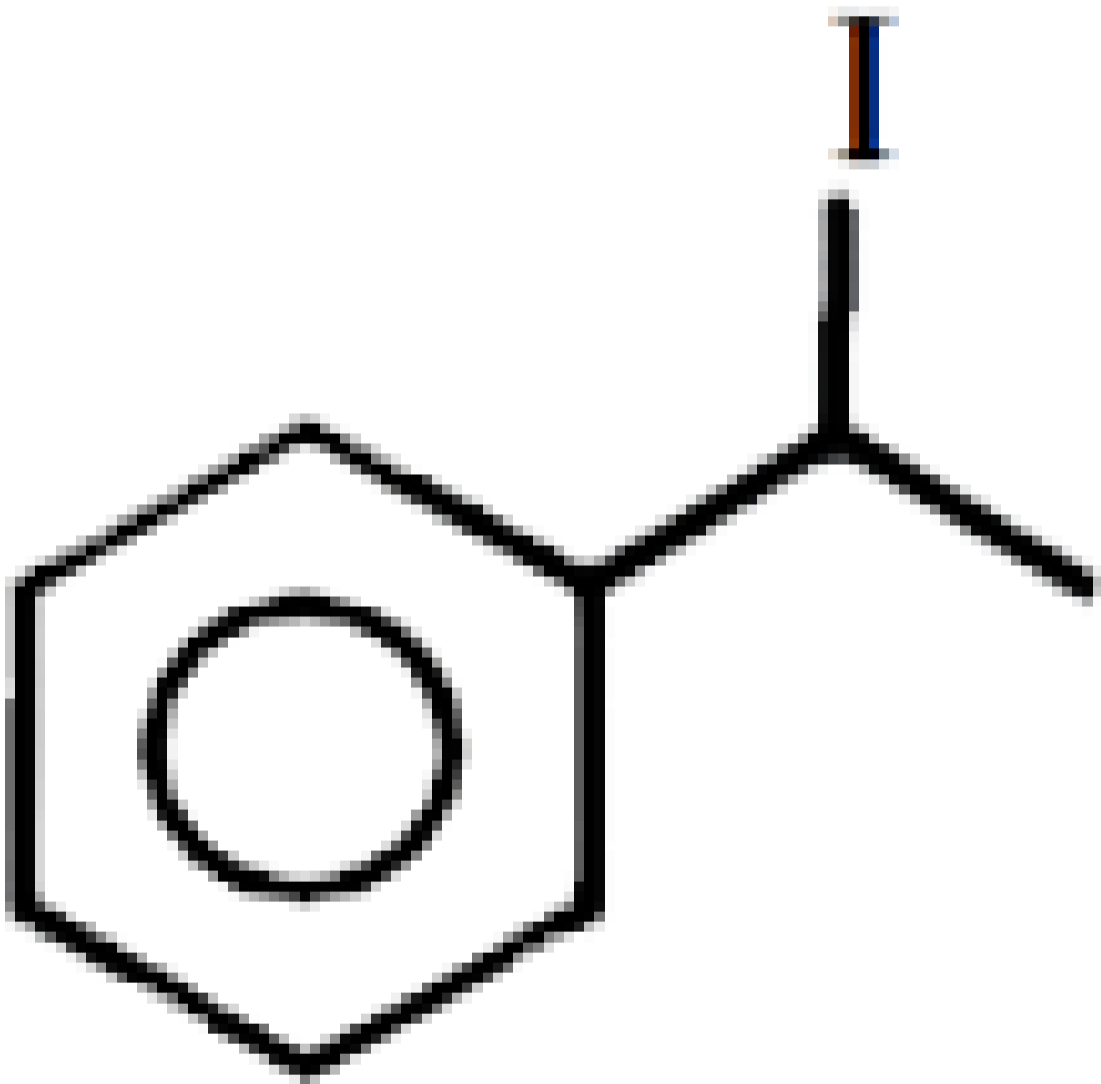
(b).

(c)



(c).

(d)



(d).

(A) $a > b > c > d$

(B) $b > c > a > d$

(C) $b > c > d > a$

(D) $d > c > b > a$

CORRECT OPTION: C

[📺 Watch Free Video Solution on Doubtnut](#)

**JEE MAINS 10 APRIL 2019 - PAPER 1 SHIFT 1 -
MEMORY BASED - CHEMISTRY**

In a given polymers which is a condensation polymers.

- (A) Teflon
- (B) Neoprene
- (C) Buna-S
- (D) Nylon-6,6

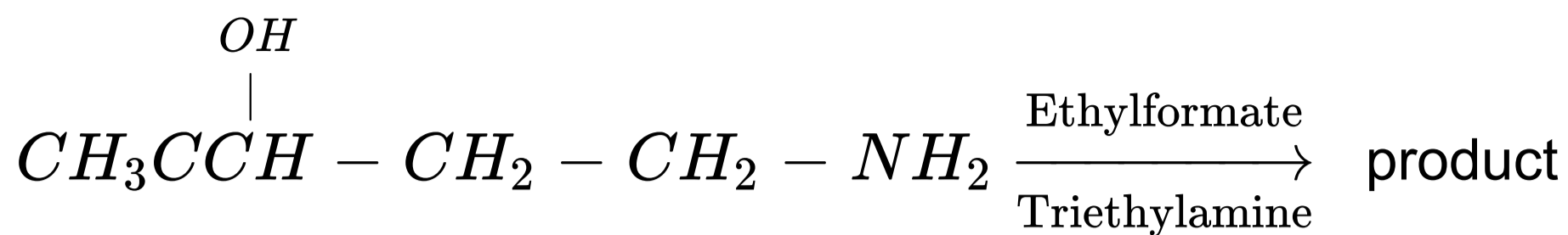
CORRECT OPTION: D

[📺 Watch Free Video Solution on Doubtnut](#)

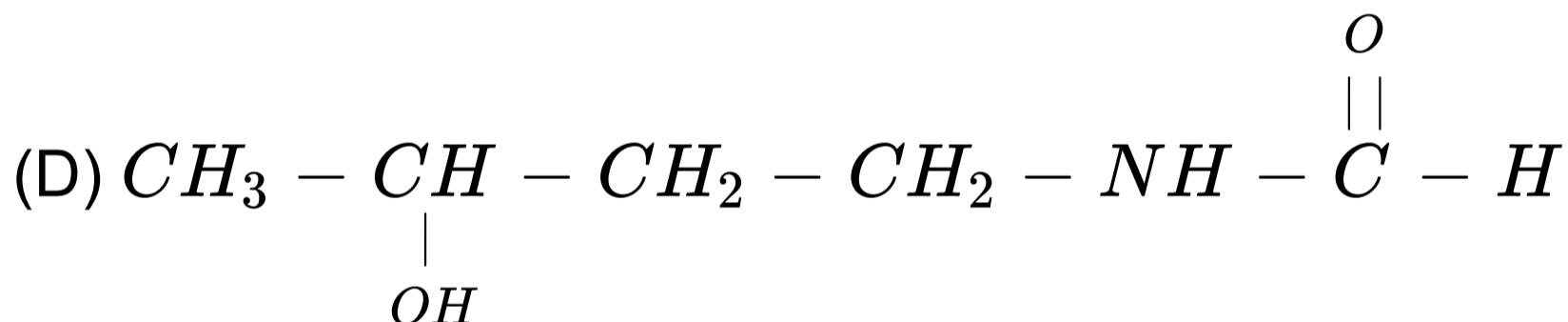
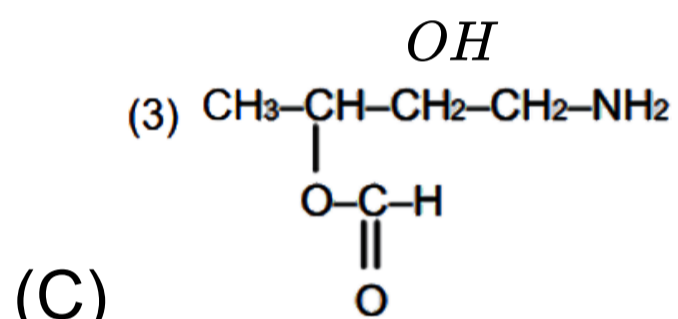
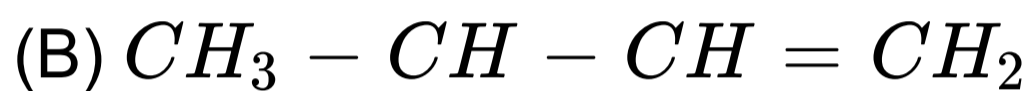
2 - 9486411

3 - 9486412

**JEE MAINS 10 APRIL 2019 - PAPER 1 SHIFT 1 -
MEMORY BASED - CHEMISTRY**



The major product of the given reaction is:



CORRECT OPTION: D

[Watch Free Video Solution on Doubtnut](#)

N-Ethylphthalimide \rightarrow Ethylamine

Reagent for the conversion of this reaction is

(A) H_2O

(B) $NaBH_4$

(C) $NH_2 - NH_2$

(D) CaH_2

CORRECT OPTION: A

[📺 Watch Free Video Solution on Doubtnut](#)

5 - 9486414

**JEE MAINS 10 APRIL 2019 - PAPER 1 SHIFT 1 -
MEMORY BASED - CHEMISTRY**

Which type of linkage is present in amylopectin?

(A) $\alpha - D$ glucose, $C_1 - C_4$ & $C_2 - C_6$

(B) $\alpha - D$ glucose, $C_1 - C_4$ & $C_1 - C_6$

(C) β - D glucose, $C_1 - C_4$ & $C_2 - C_6$

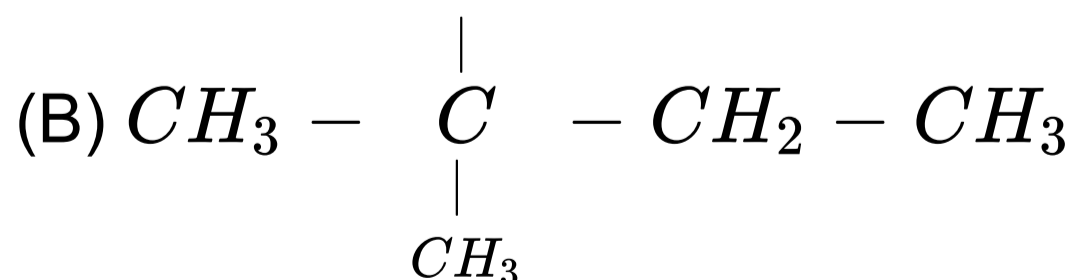
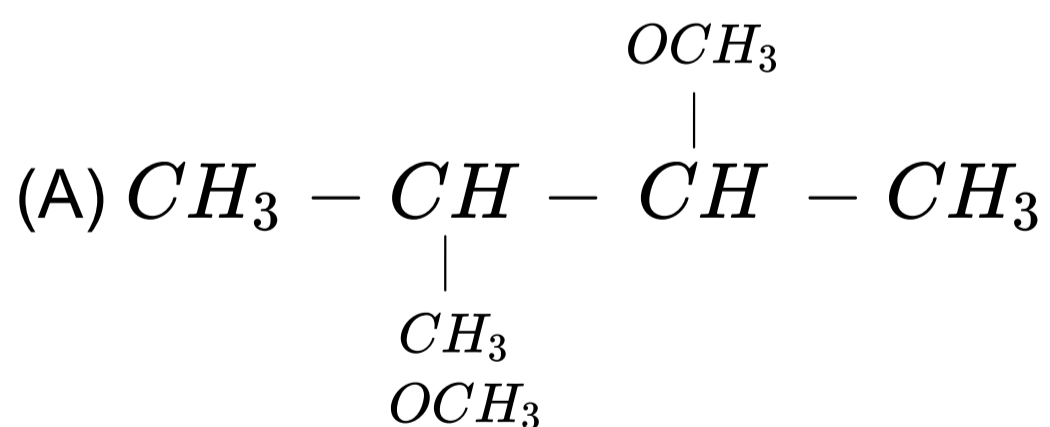
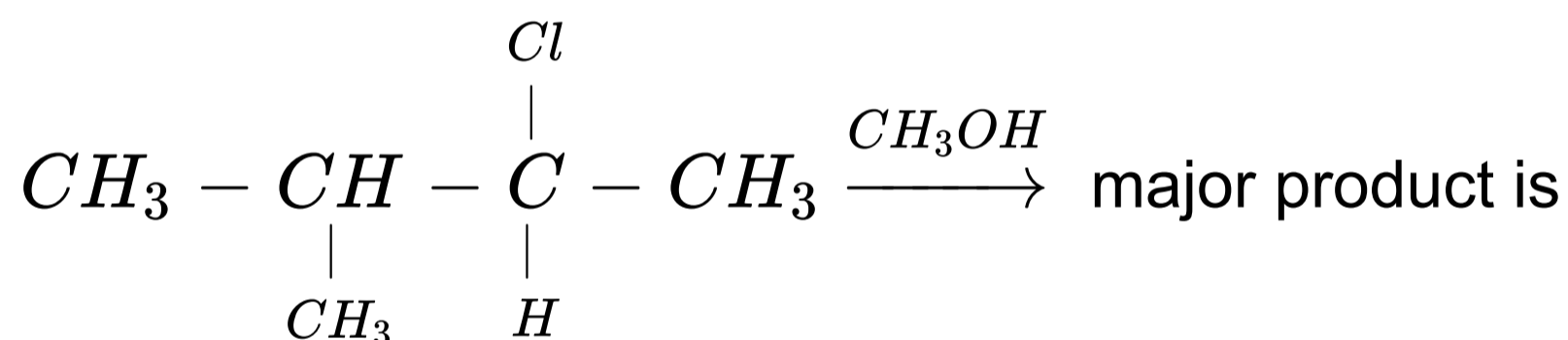
(D) β - D glucose, $C_1 - C_4$ & $C_1 C_6$

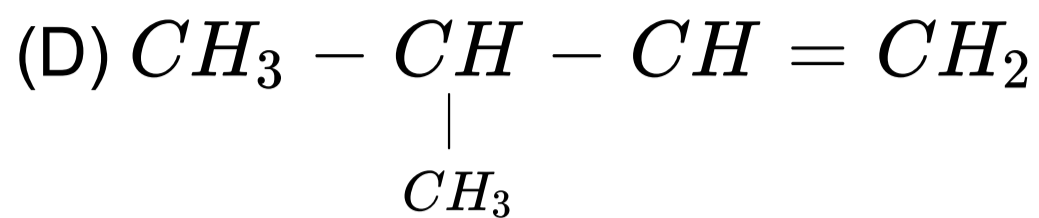
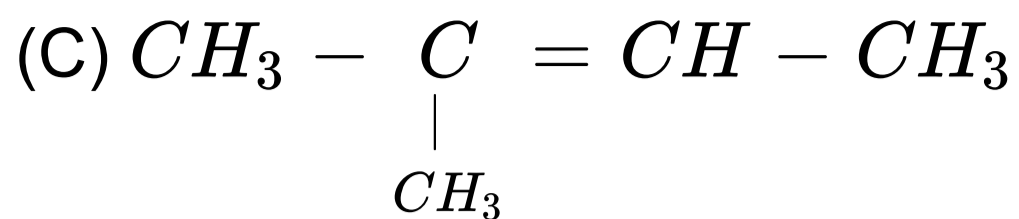
CORRECT OPTION: B

[Watch Free Video Solution on Doubtnut](#)

6 - 9486415

**JEE MAINS 10 APRIL 2019 - PAPER 1 SHIFT 1 -
MEMORY BASED - CHEMISTRY**



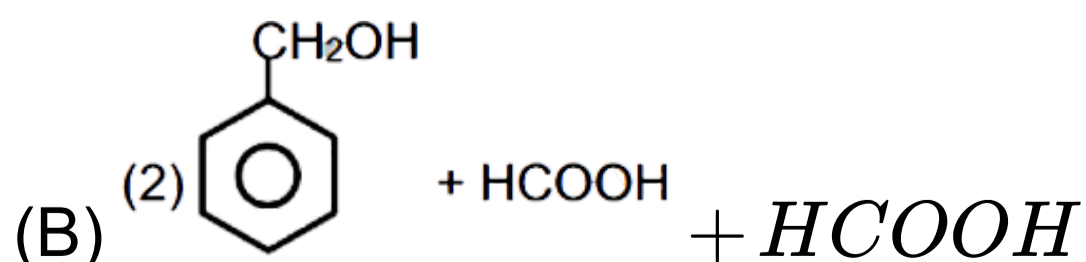
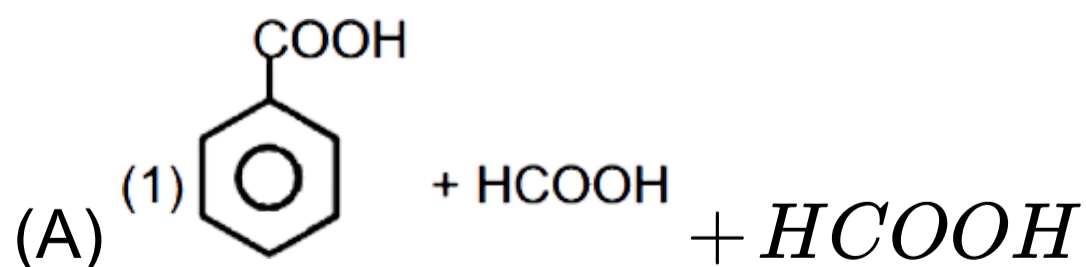
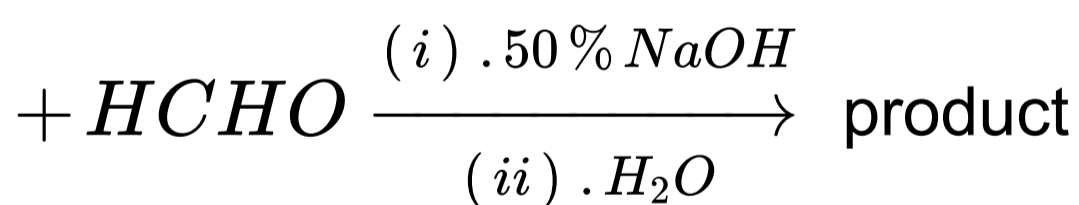
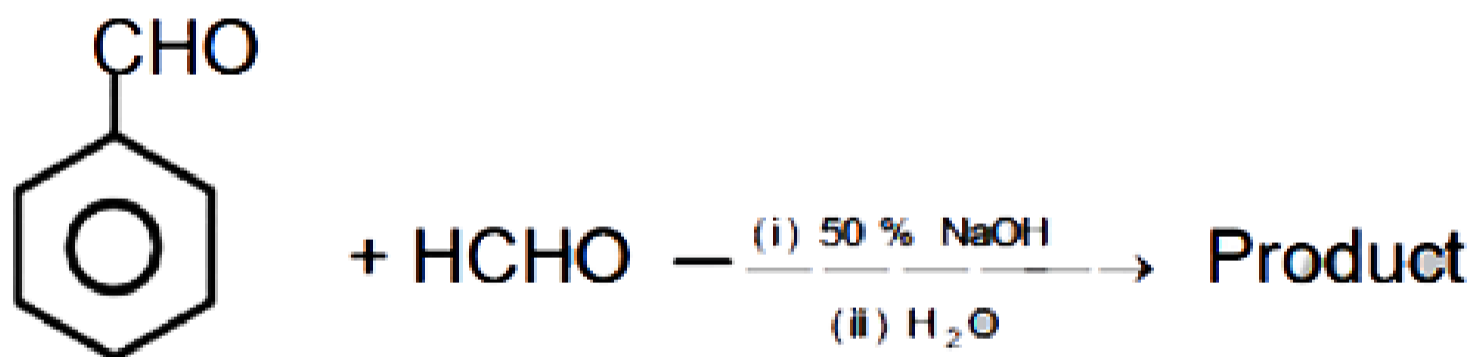


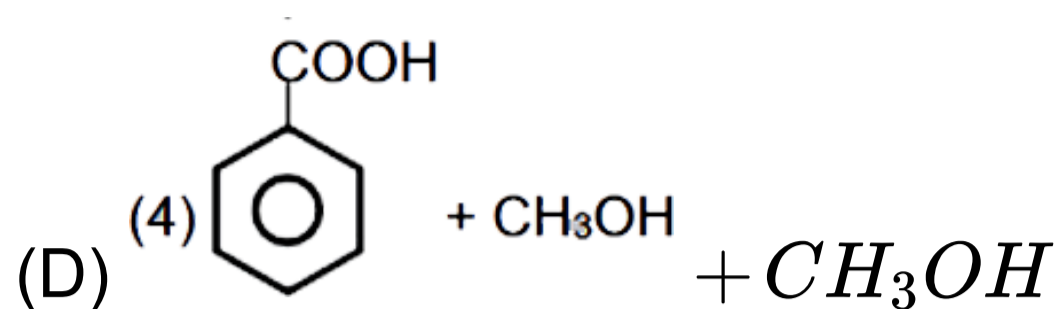
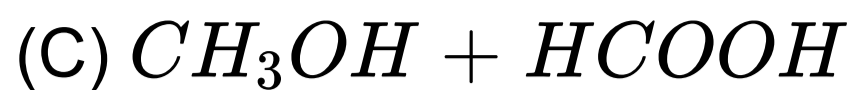
CORRECT OPTION: B

[© Watch Free Video Solution on Doubtnut](#)

7 - 9486416

**JEE MAINS 10 APRIL 2019 - PAPER 1 SHIFT 1 -
MEMORY BASED - CHEMISTRY**

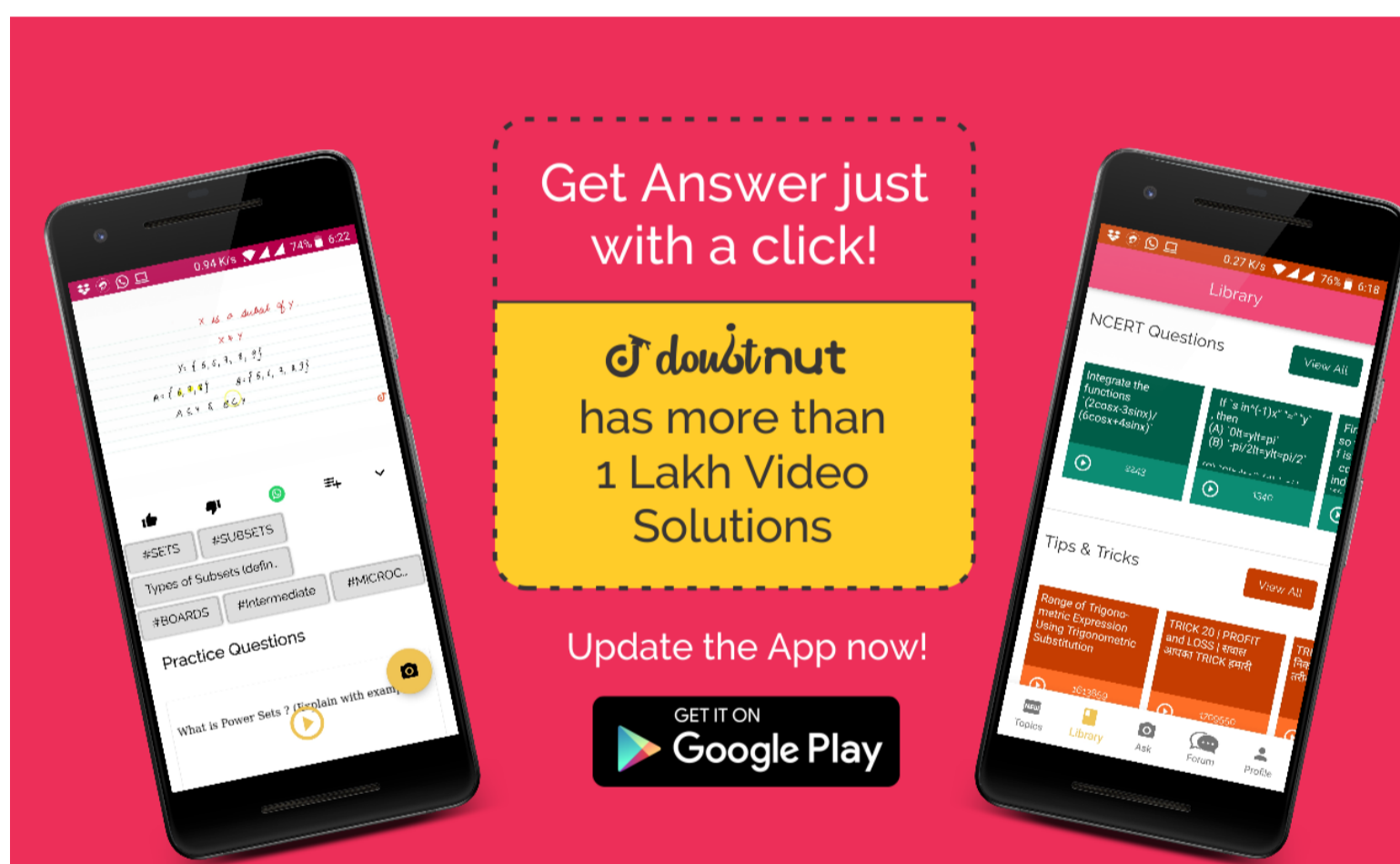




CORRECT OPTION: B

[📺 Watch Free Video Solution on Doubnut](#)

 **doubnut**
पढ़ना हुआ आसान



Get Answer just with a click!

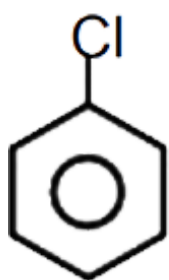
doubnut
has more than
1 Lakh Video
Solutions

Update the App now!

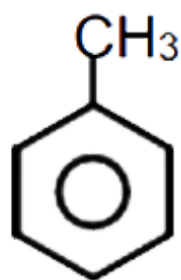
GET IT ON
Google Play

8 - 9486417

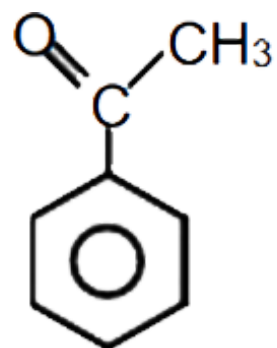
**JEE MAINS 10 APRIL 2019 - PAPER 1 SHIFT 1 -
MEMORY BASED - CHEMISTRY**



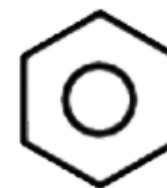
(a)



(b)



(c)



(d)

The correct rate of reaction of given compounds towards electrophilic aromatic substitution reaction is

(A) $b > d > a > c$

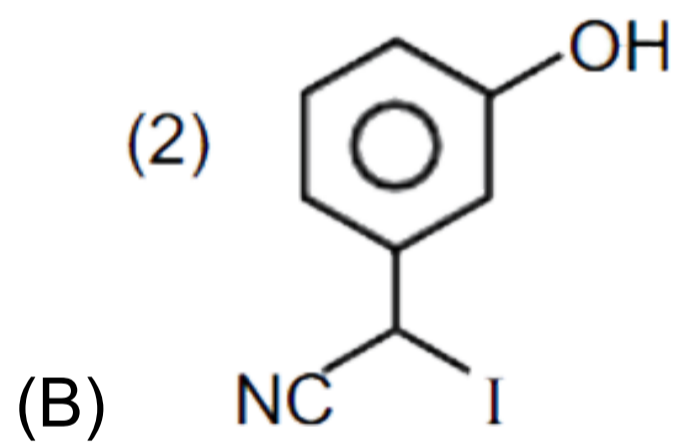
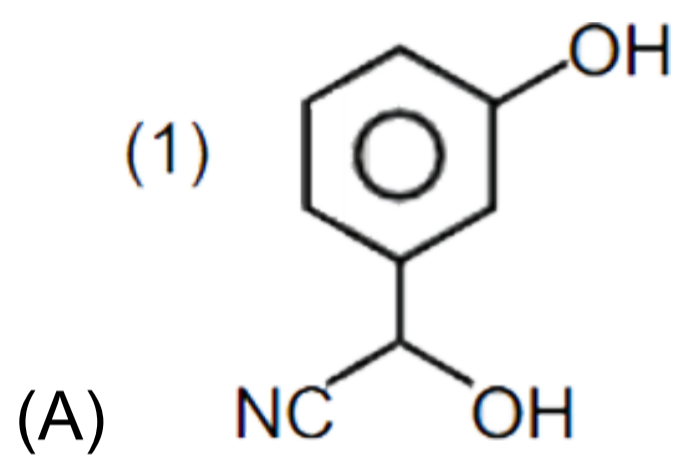
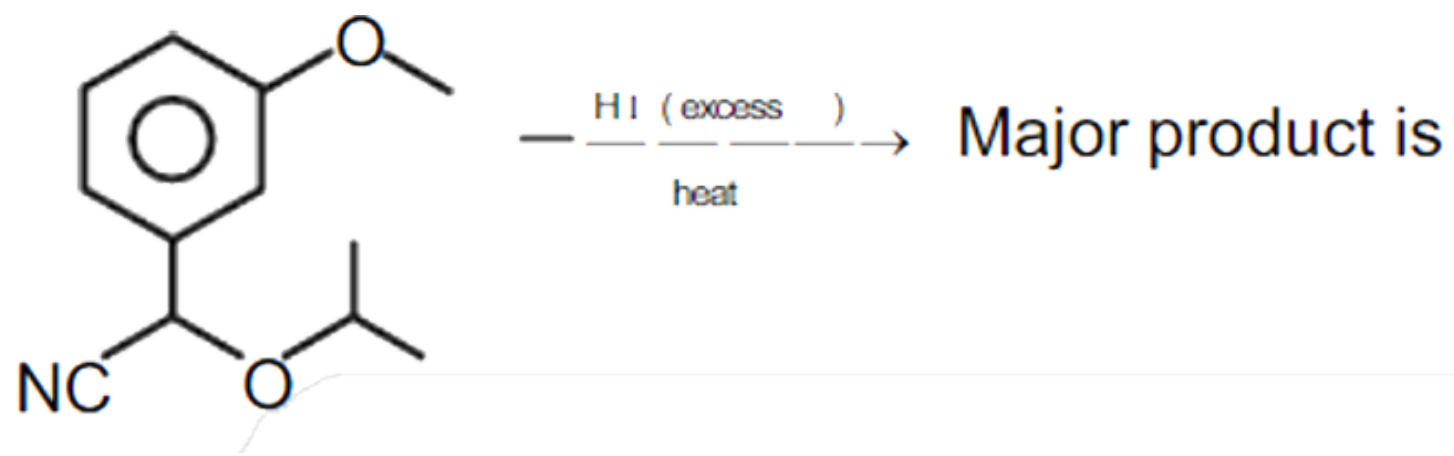
(B) $b > a > d > c$

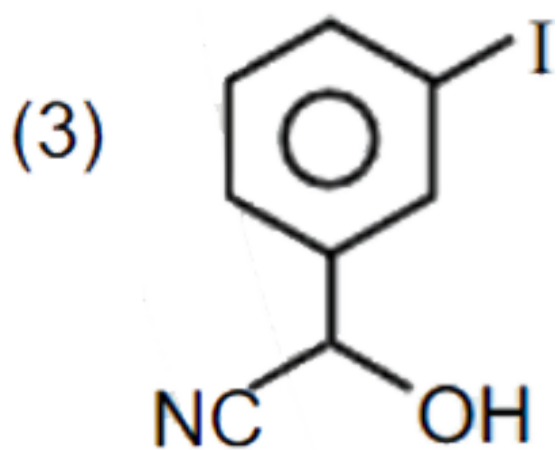
(C) $c > a > d > b$

(D) $a > b > d > c$

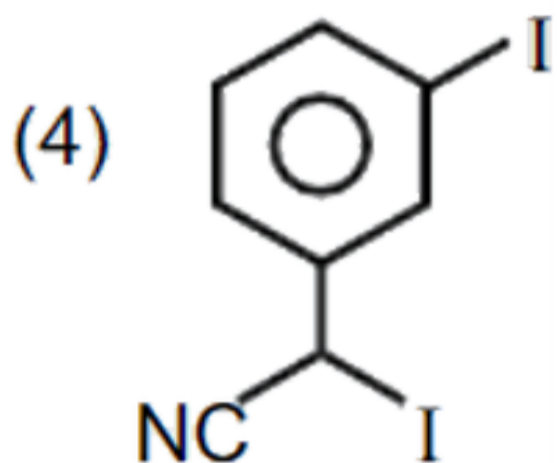
CORRECT OPTION: A

[© Watch Free Video Solution on Doubtnut](#)





(C)



(D)

CORRECT OPTION: B

[📺 Watch Free Video Solution on Doubtnut](#)

10 - 9486419

**JEE MAINS 10 APRIL 2019 - PAPER 1 SHIFT 1 -
MEMORY BASED - CHEMISTRY**

In which layer of atmosphere there is cloud formation & in which layer we live respectively?

(A) Troposphere and troposphere

(B) proposphere and stratosphere

(C) stratosphere and stratosphere

(D) stratosphere and troposphere

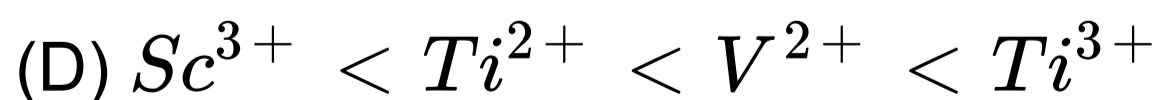
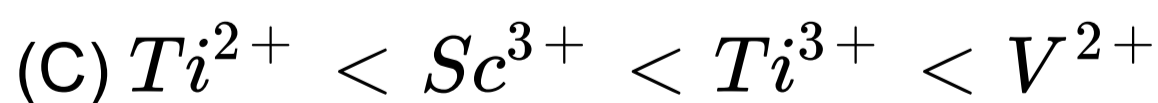
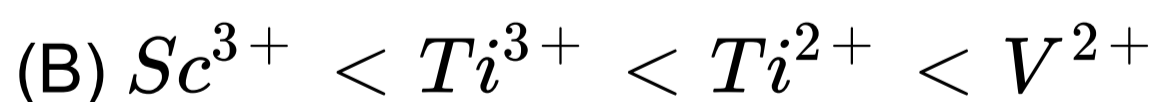
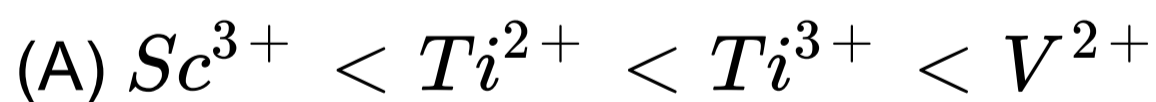
CORRECT OPTION: A

[© Watch Free Video Solution on Doubnut](#)

11 - 9486420

**JEE MAINS 10 APRIL 2019 - PAPER 1 SHIFT 1 -
MEMORY BASED - CHEMISTRY**

in Sc^{3+} , Ti^{2+} , Ti^{3+} , V^{2+} increasing order of spin only
magnetic moment is:



CORRECT OPTION: B

[© Watch Free Video Solution on Doubtnut](#)

**JEE MAINS 10 APRIL 2019 - PAPER 1 SHIFT 1 -
MEMORY BASED - CHEMISTRY**

In which case, process will be spontaneous at all temperature?

(A) $\Delta H < 0, \Delta S > 0$

(B) $\Delta H > 0, \Delta S > 0$

(C) $\Delta H < 0, \Delta S < 0$

(D) $\Delta H > 0, \Delta S < 0$

CORRECT OPTION: A

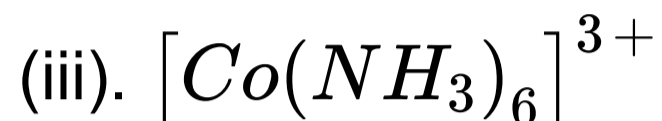
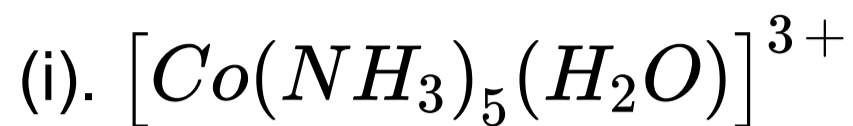
[© Watch Free Video Solution on Doubtnut](#)

12 - 9486421

13 - 9486422

**JEE MAINS 10 APRIL 2019 - PAPER 1 SHIFT 1 -
MEMORY BASED - CHEMISTRY**

In the give complexes



The decreasing order of λ absorbed is

(A) $iii > ii > i$

(B) $iii > i > ii$

(C) $ii > i > iii$

(D) $ii > iii > i$

CORRECT OPTION: C

[📺 Watch Free Video Solution on Doubtnut](#)

Which alloy is used in the manufacturing of aeroplane?

(A) $Mg - Al$

(B) $Mg - Sn$

(C) $Mg - Pb$

(D) $Mg - Sb$

CORRECT OPTION: A

[📺 Watch Free Video Solution on Doubtnut](#)

15 - 9486424

**JEE MAINS 10 APRIL 2019 - PAPER 1 SHIFT 1 -
MEMORY BASED - CHEMISTRY**

Adsorption of a gas follows the equation $\frac{x}{m} = kP^{\frac{1}{2}}$ Itbr.

Then the effect of pressure & temperature of physical adsorption of gas on solid is:,

(A) increase with pressure increase, decrease with

temperature increase

(B) increase with both temperature & pressure increase

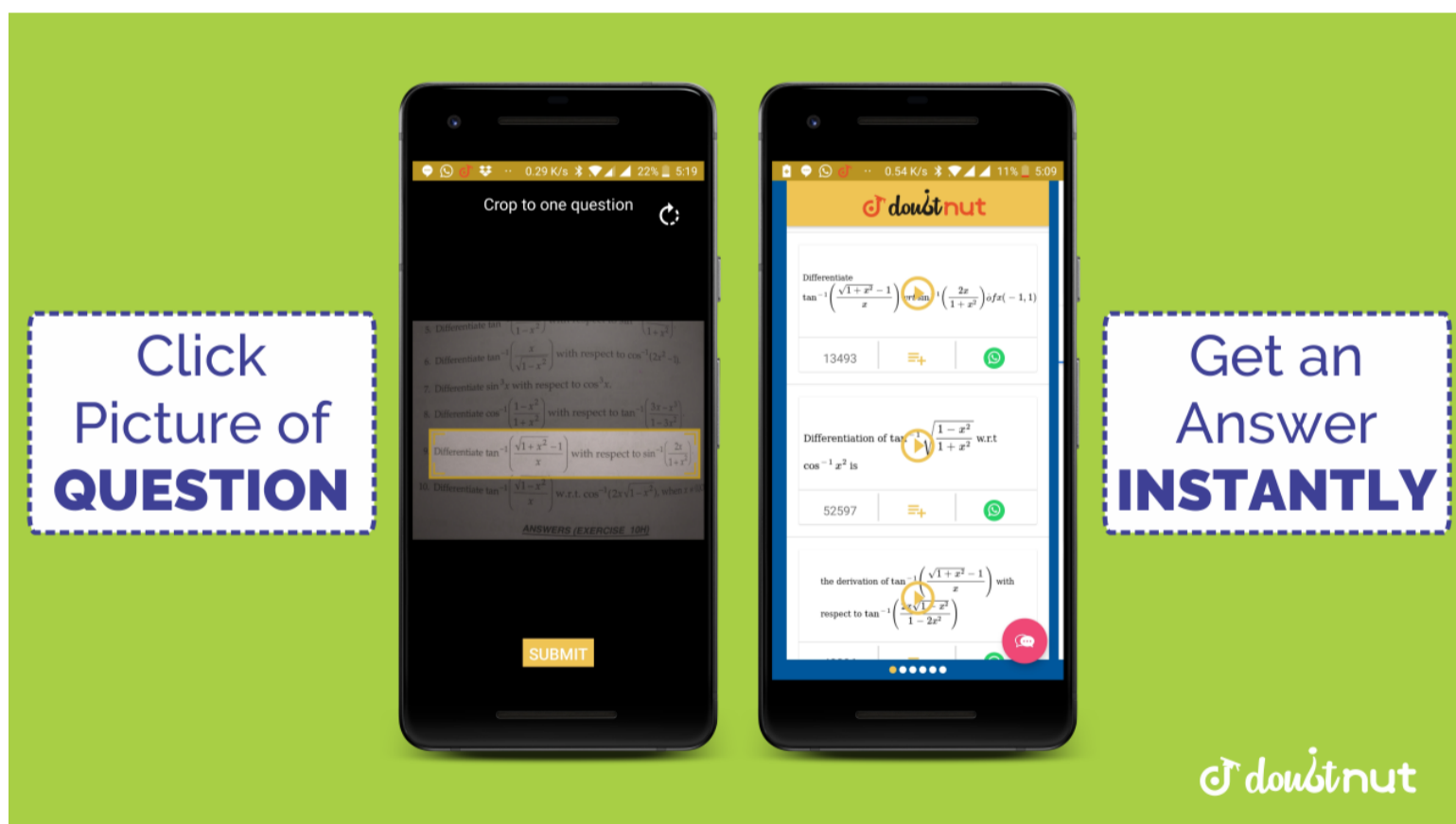
(C) decrease with pressure increase, increase with temperature increase

(D) decrease with both temperature & pressure increase

CORRECT OPTION: A

[📺 Watch Free Video Solution on DoubtNut](#)

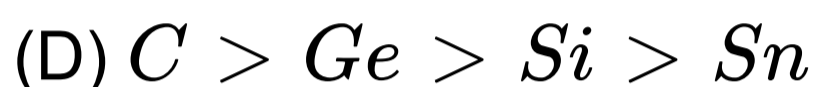
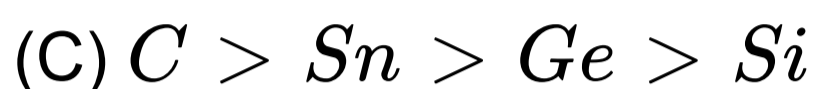
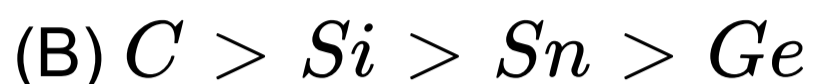
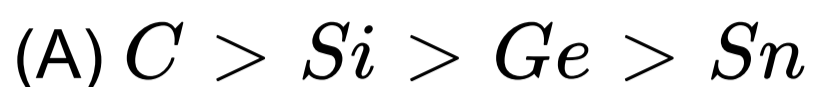
 **doubtNut**
पढ़ना हुआ आसान



16 - 9486425

**JEE MAINS 10 APRIL 2019 - PAPER 1 SHIFT 1 -
MEMORY BASED - CHEMISTRY**

In C, Si Ge and Sn the decreasing order of catenation is



CORRECT OPTION: A

[© Watch Free Video Solution on Doubtnut](#)

17 - 9486426

**JEE MAINS 10 APRIL 2019 - PAPER 1 SHIFT 1 -
MEMORY BASED - CHEMISTRY**

$\left(\begin{array}{ll} \text{(a). Mond process} & \text{(1) Ni} \\ \text{(b). Van-Arkel} & \text{(2) Zr} \\ \text{(c). Liquation} & \text{(3). Ga} \\ \text{(d). Zone refining} & \text{(4) Sn} \end{array} \right)$

(A) a-(1), b-(2), c-(2), d-(4)

(B) a-(1), b-(2), c-(4), d-(3)

(C) a-(3), b-(2), c-(4), d-(1)

(D) a-(2), b-(3), c-(4), d-(1)

CORRECT OPTION: B

[© Watch Free Video Solution on Doubnut](#)

18 - 9486427

**JEE MAINS 10 APRIL 2019 - PAPER 1 SHIFT 1 -
MEMORY BASED - CHEMISTRY**

0.6 g urea is added to 360 g water. Calculate lowering in vapor pressure for this solution (given: vapour pressure of H_2O is 35 mm of Hg)

(A) 0.027 mm of Hg

(B) 0.035 mm of Hg

(C) 0.017 mm of Hg

(D) 0.040 mm of Hg

CORRECT OPTION: C

[📺 Watch Free Video Solution on Doubtnut](#)

19 - 9486428

**JEE MAINS 10 APRIL 2019 - PAPER 1 SHIFT 1 -
MEMORY BASED - CHEMISTRY**

10 ml of hydrocarbon requires 55 ml of oxygen for complete combustion producing 40 ml of CO_2 . The formula of the hydrocarbon is:

- (A) C_4H_6
- (B) C_5H_{10}
- (C) C_4H_8
- (D) C_4H_{10}

CORRECT OPTION: A

[📺 Watch Free Video Solution on Doubtnut](#)

**JEE MAINS 10 APRIL 2019 - PAPER 1 SHIFT 1 -
MEMORY BASED - CHEMISTRY**

$S_1 \rightarrow$ conductivity increases on decreasing concentration of electrolyte

$S_2 \rightarrow$ molar conductivity increases on decreasing concentration of electrolyte.

20 - 9486429

- (A) S_1 is true, S_2 is false
- (B) both S_1 & S_2 are true
- (C) both S_1 & S_2 are false
- (D) S_1 is false & S_2 is true

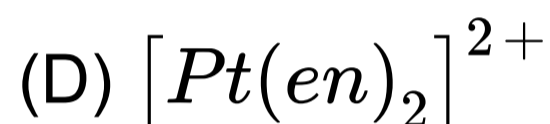
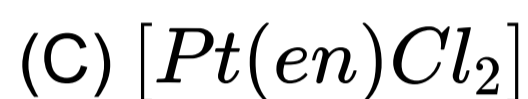
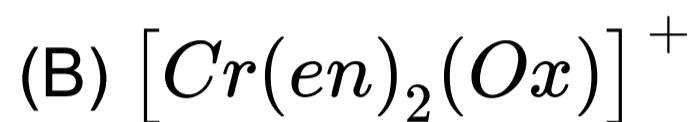
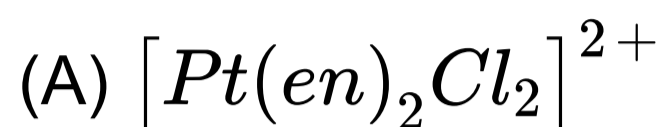
CORRECT OPTION: D

[© Watch Free Video Solution on Doubtnut](#)

21 - 9486430

**JEE MAINS 10 APRIL 2019 - PAPER 1 SHIFT 1 -
MEMORY BASED - CHEMISTRY**

In which of the following complex, cis-trans isomerism is possible?



CORRECT OPTION: A

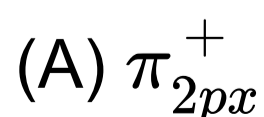
[📺 Watch Free Video Solution on Doubtnut](#)

22 - 9486431

**JEE MAINS 10 APRIL 2019 - PAPER 1 SHIFT 1 -
MEMORY BASED - CHEMISTRY**

In the conversion of $O_2 \rightarrow O_2^-$

electron enter in which molecular orbital?



(B) π_{2px}

(C) σ_{2pz}^+

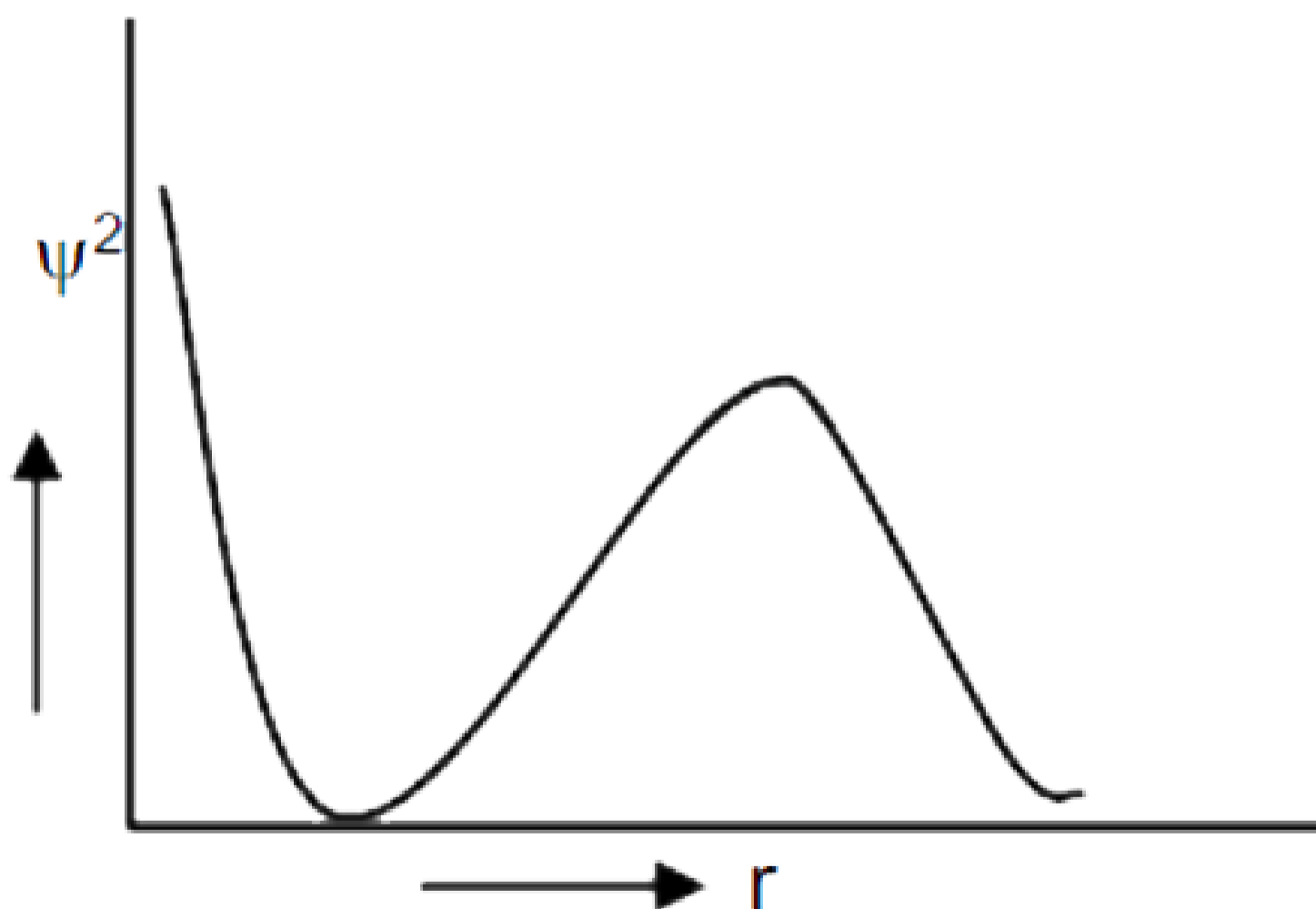
(D) σ_{2pz}

CORRECT OPTION: A

[© Watch Free Video Solution on Doubtnut](#)

23 - 9486432

**JEE MAINS 10 APRIL 2019 - PAPER 1 SHIFT 1 -
MEMORY BASED - CHEMISTRY**



Given graph is of which orbital?

(A) 2p

(B) 1s

(C) 2s

(D) 3s

CORRECT OPTION: C

[📺 Watch Free Video Solution on Doubtnut](#)



Get Solutions as YOU TYPE

Click Here to TYPE & ASK

find the equation of tangent a

Find the equation of tangent to the curve 'x=a(th...

Find the equation of tangent to the curve 'x=a(th...

Find the equation of tangent to the curve 'y=sin^(-1...

If '3x+y=0' is a tangent to a circle whose center is ...

Find the equation of tangent to 'y=int_(x^2)(x^3)(...

doubtnut

24 - 9486433

JEE MAINS 10 APRIL 2019 - PAPER 1 SHIFT 1 - MEMORY BASED - CHEMISTRY

(i). For a weak monobasic acid $K_a = 10^{-5}$ and $pH = 5$
then degree of dissociation of acid is 50 %

(ii). $[H_2SO_4] = 0.1M$ $V = 400ml$

$[NaOH] = 0.1M$ $V = 400ml$

on mixing these solution pH is approximately 1.3

(iii). Ionic product of water depends on temperature

(iv). Le-chatelier's principle is not applicable for common ion effect.

Select the correct options:

(A) I,ii,iii

(B) ii,iii

(C) I,ii,iv

(D) ii,iv

CORRECT OPTION: A

25 - 9486434

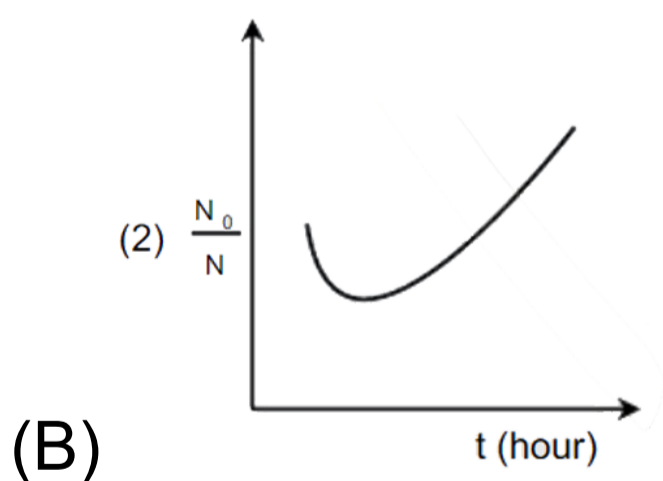
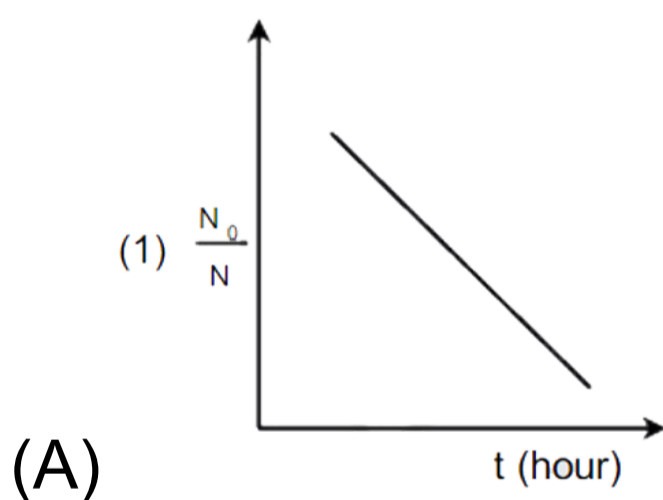
JEE MAINS 10 APRIL 2019 - PAPER 1 SHIFT 1 - MEMORY BASED - CHEMISTRY

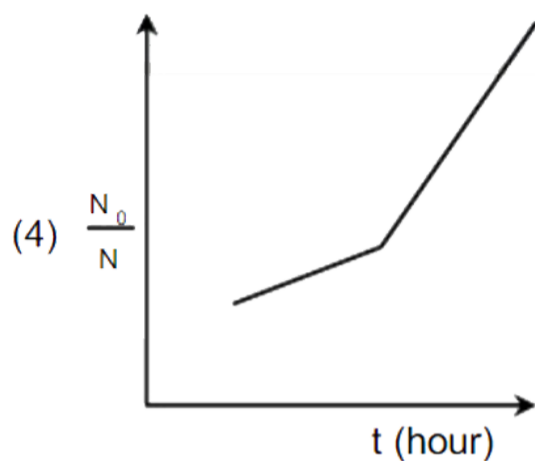
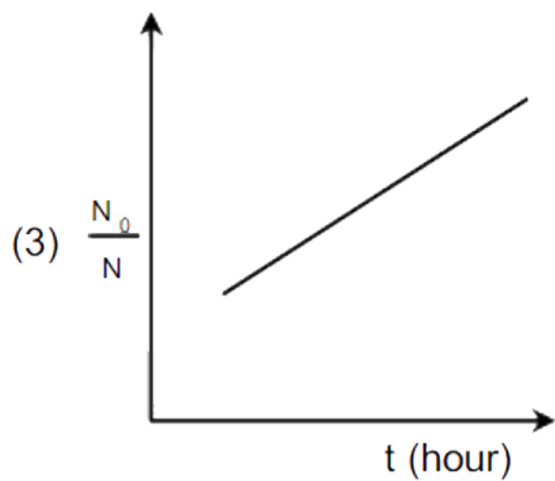
Growth of a bacteria is represented as $N(t) = N_0 e^{\lambda t}$

After one hour a drug is given which decreases bacterial

growth as $\frac{dN}{dt} = -5N^2$

Which of the following graph is correct.





CORRECT OPTION: B

[📺 Watch Free Video Solution on Doubtnut](#)

26 - 9486436

JEE MAINS 10 APRIL 2019 - PAPER 1 SHIFT 1 - MEMORY BASED - CHEMISTRY

Two radioactive substances are having same initial number of nuclei. Disintegration constant of one substance is 10λ , other one λ after how much time ratio of number of nuclei becomes $\frac{1}{e}$?

- (A) $\frac{1}{9\lambda}$
- (B) $\frac{1}{10\lambda}$
- (C) $\frac{1}{11\lambda}$
- (D) $\frac{1}{\lambda}$

CORRECT OPTION: A

[© Watch Free Video Solution on Doubtnut](#)

27 - 9486437

**JEE MAINS 10 APRIL 2019 - PAPER 1 SHIFT 1 -
MEMORY BASED - CHEMISTRY**

Which of the following does not have S-S linkage?

- (A) $H_2S_2O_5$
- (B) $H_2S_2O_7$
- (C) $H_2S_2O_3$
- (D) $H_2S_2O_6$
-

CORRECT OPTION: B

© Watch Free Video Solution on Doubtnut

28 - 9486438

JEE MAINS 10 APRIL 2019 - PAPER 1 SHIFT 1 - MEMORY BASED - CHEMISTRY

Gas गैस	a ($\text{P}_a \cdot \text{Lit}^2 \cdot \text{mole}^{-2}$)	b ($\text{Lit} \cdot \text{mol}^{-1}$)
A	650	0.0051
B	155	0.0049
C	450	0.0051
D	155	0.049

For four gases vander waal's constant a & b are given as following

Between gas A & C which has higher volume and between gas B & D which has higher compressibility?

(A) A,B

(B) A,D

(C) C,B

(D) C,D

CORRECT OPTION: C

[📺 Watch Free Video Solution on Doubtnut](#)

29 - 9486439

**JEE MAINS 10 APRIL 2019 - PAPER 1 SHIFT 1 -
MEMORY BASED - CHEMISTRY**

In which of the following option all are isoelectronic?

(A) N^{3-} , O^{2-} , F^{-} , Na^{+}

(B) Na^{+} , N^{-3} , F^{-} , Li^{+}

(C) Li^{+} , N^{3-} , F^{-} , O^{2-}

(D) Li^{+} , Na^{+} , O^{2-} , F^{-}

CORRECT OPTION: A

[📺 Watch Free Video Solution on Doubtnut](#)

📌 Download Doubtnut to Ask Any Math Question By just a click

📌 Get A Video Solution For Free in Seconds

📌 Doubtnut Has More Than 1 Lakh Video Solutions

📌 Free Video Solutions of NCERT, RD Sharma, RS Aggarwal, Cengage (G.Tewani), Resonance DPP, Allen, Bansal, FIITJEE, Akash, Narayana, VidyaMandir

📌 Download Doubtnut Today

doubtnut

Get Answer just with a click!

doubtnut has more than 1 Lakh Video Solutions

Update the App now!

GET IT ON Google Play

The advertisement features a red background. On the left, a smartphone displays a math problem: "x is a subset of y", with sets $x = \{1, 2, 3, 4, 5\}$ and $y = \{1, 2, 3, 4, 5, 6, 7, 8, 9, 10\}$. Below the problem are tags like #SETS, #SUBSETS, and #MICROC... and a "Practice Questions" section with a video player. On the right, another smartphone shows a "Library" screen with "NCERT Questions" and "Tips & Tricks" sections. The central text box is yellow with a dashed border. At the bottom center is a "GET IT ON Google Play" button.