

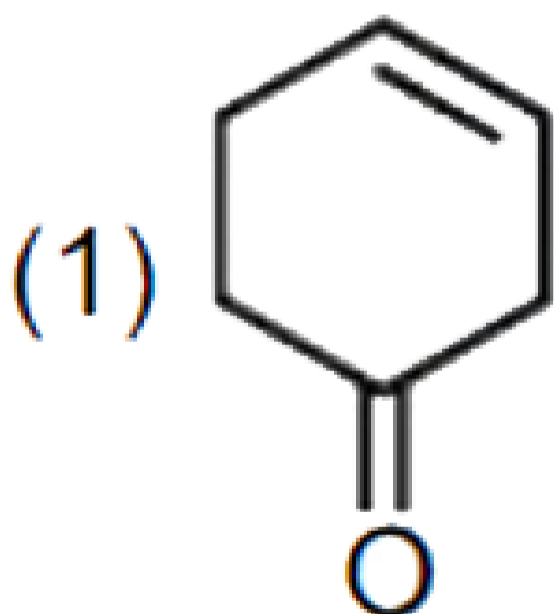
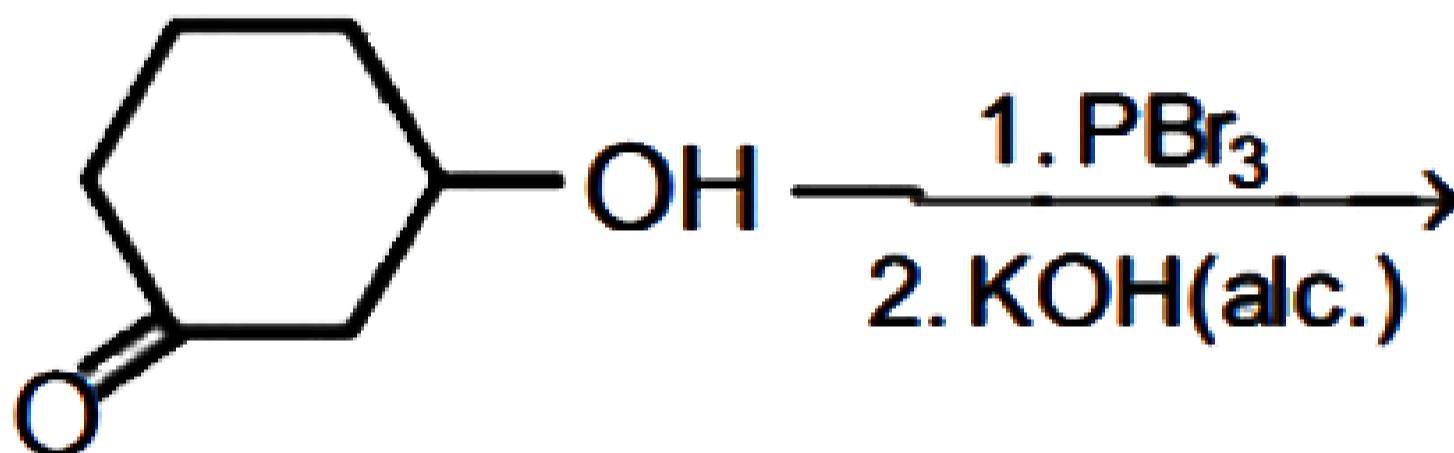
Ques No.

Question

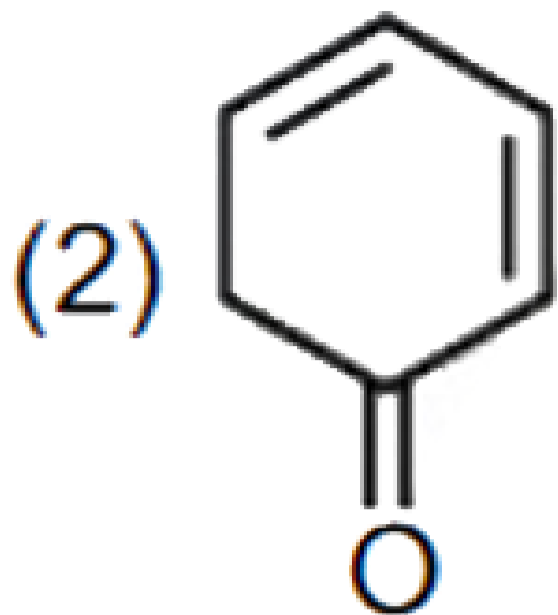
1 - 9464146

**JEE MAINS 09 APRIL 2019 - PAPER 1 SHIFT 1 -
MEMORY BASED - CHEMISTRY**

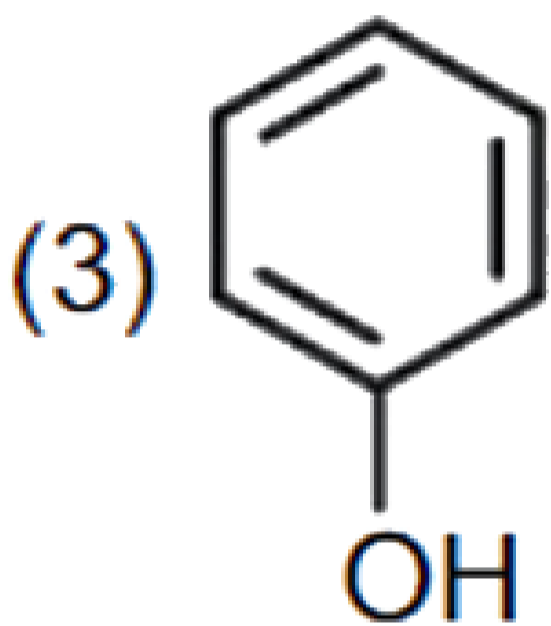
The product of the following reaction is:



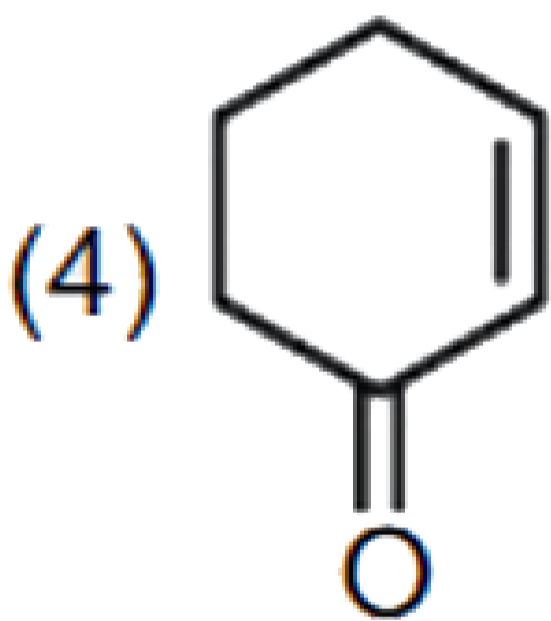
(A)



(B)



(C)

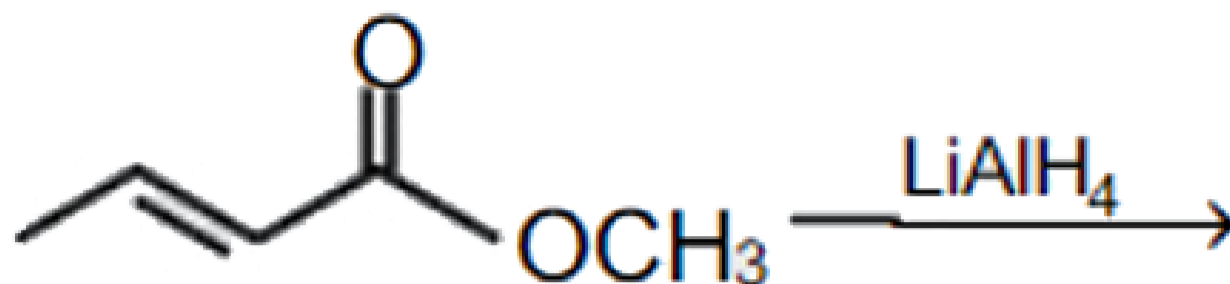


(D)

CORRECT OPTION: D

[© Watch Free Video Solution on Doubtnut](#)

Which of the following is the major product of give reation:



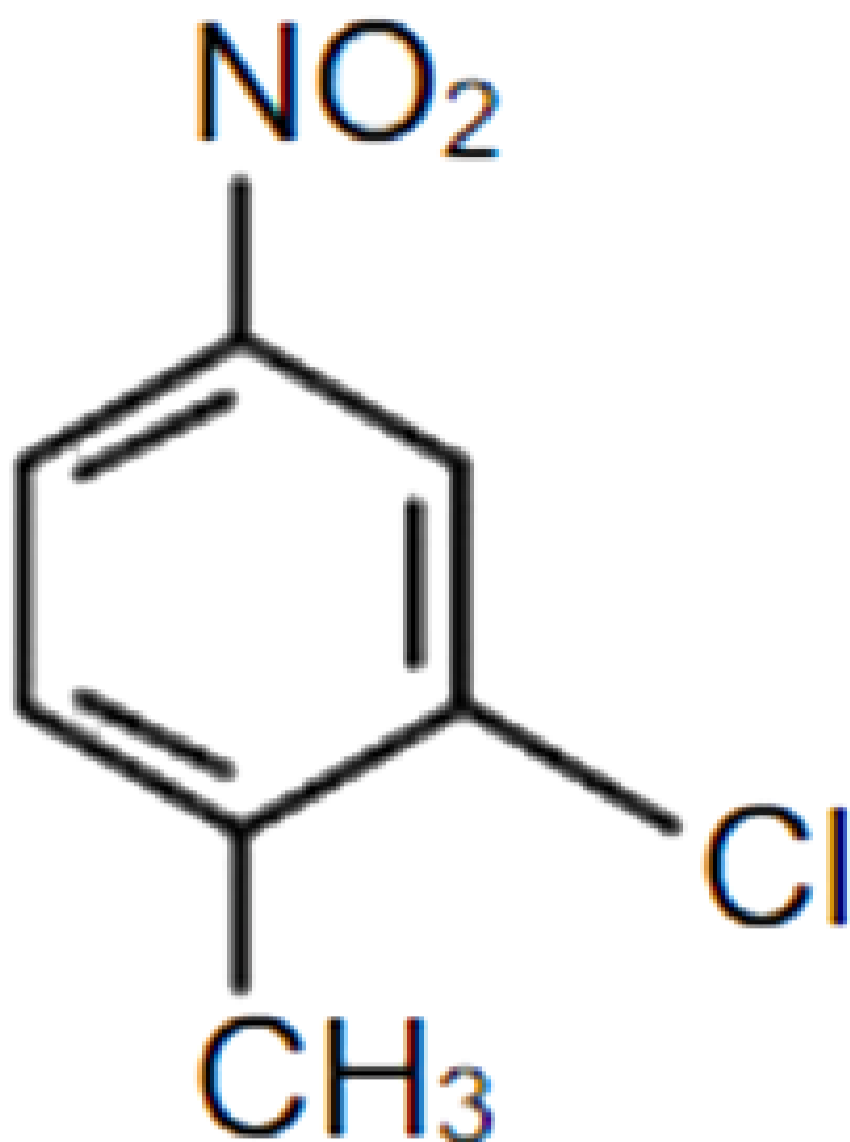
overset(LiAlH_(4))rarr`

- (A)
- (B)
- (C)
- (D)

CORRECT OPTION: A

[© Watch Free Video Solution on Doubtnut](#)

3.



Write the *IUPAC* name of given compound:

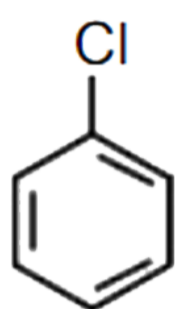
- (A) 1 - Chloro 2 - methyl 5 - nitro benzene
- (B) 2 - Chloro 1 - methyl 4 - nitro benzene
- (C) 3 - Chloro 4 - methyl 1 - nitro benzene
- (D) 5 - Chloro 4 - methyl 1 - nitro benzene

CORRECT OPTION: B

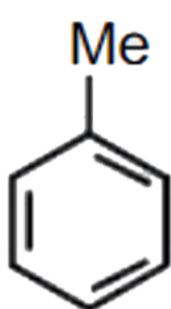
[© Watch Free Video Solution on Doubtnut](#)

**JEE MAINS 09 APRIL 2019 - PAPER 1 SHIFT 1 -
MEMORY BASED - CHEMISTRY**

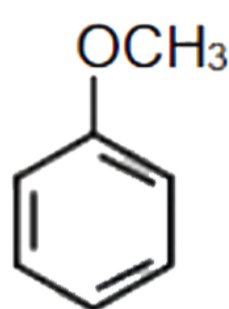
Arrange the following compounds in the correct increasing rate of aromatic electrophilic substitution.



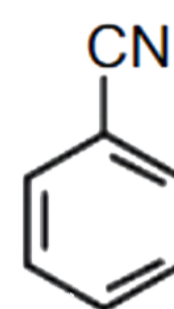
(A)



(B)



(C)



(D)

(A) $A < B < C < D$

(B) $D < A < B < C$

(C) $C < B < A < D$

(D) $C < A < B < D$

CORRECT OPTION: B

[© Watch Free Video Solution on Doubtnut](#)

Which of the following statement is not true for sucrose?

(A) It is called invert sugar

(B) It is non-reducing sugar

(C) It has glycosidic linkage between C_1 of α – glucose and C_1 of β fructose

(D) On hydrolysis gives D – Glucose and D – fructose

CORRECT OPTION: C

[© Watch Free Video Solution on Doubtnut](#)

6 - 9464151

**JEE MAINS 09 APRIL 2019 - PAPER 1 SHIFT 1 -
MEMORY BASED - CHEMISTRY**

What is the effect of release of CO_2 gas on atmosphere?

(A) Global warming

- (B) Photochemical smog
- (C) Ozone layer depletion
- (D) Tsunami

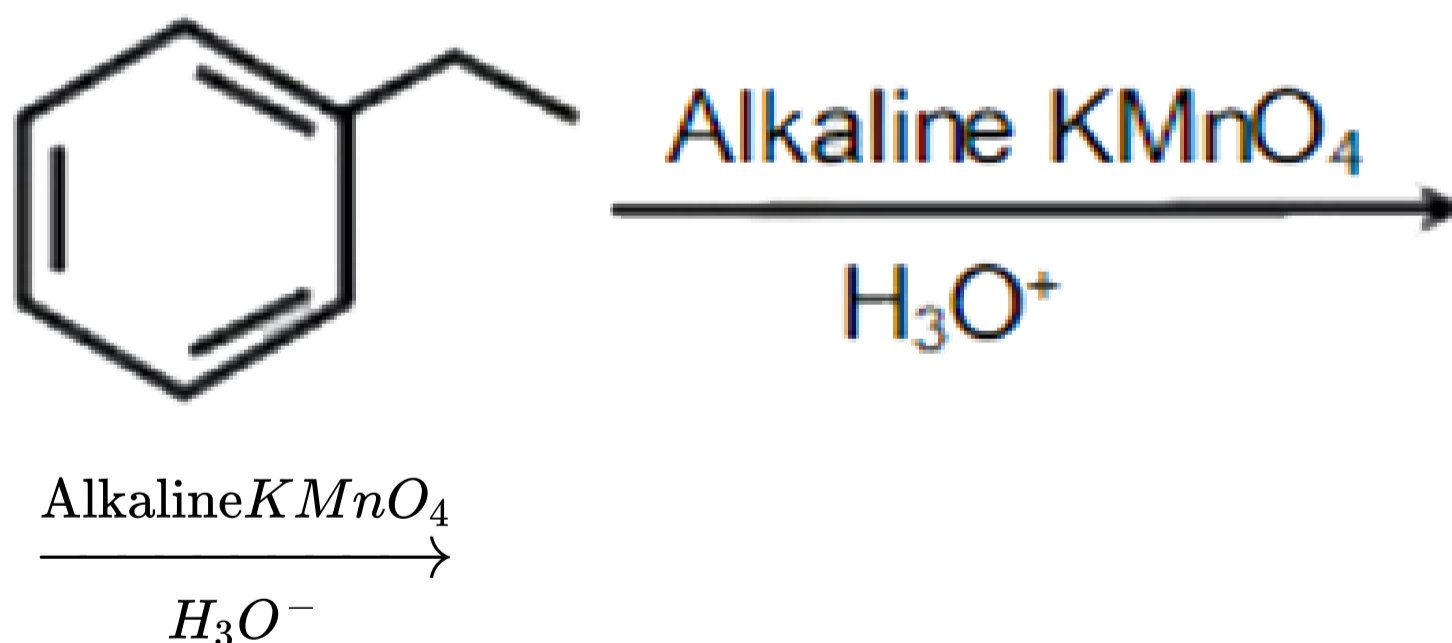
CORRECT OPTION: A

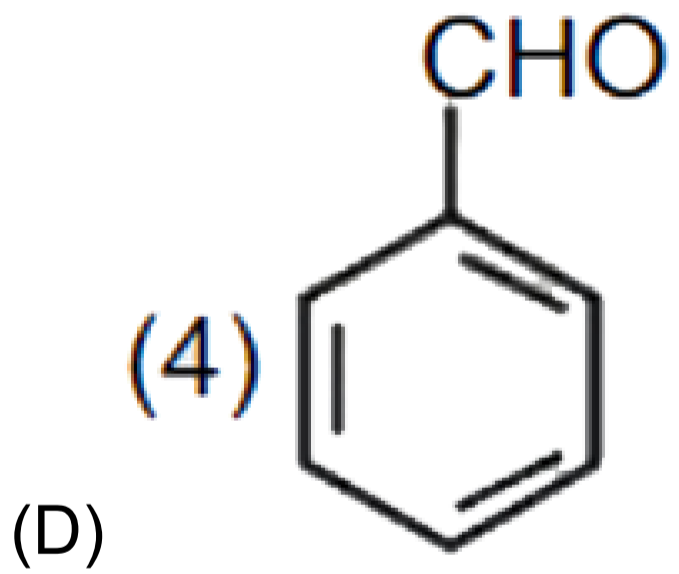
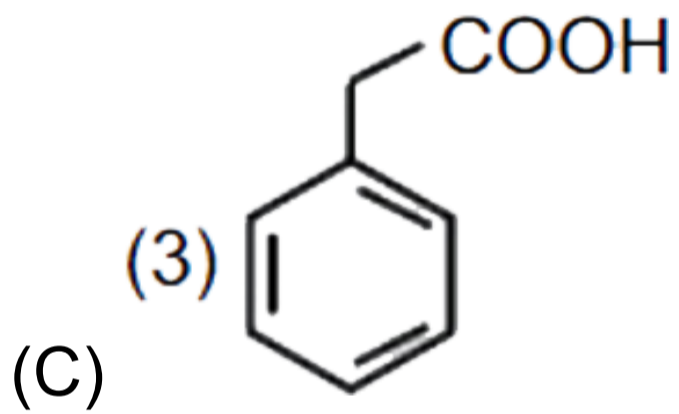
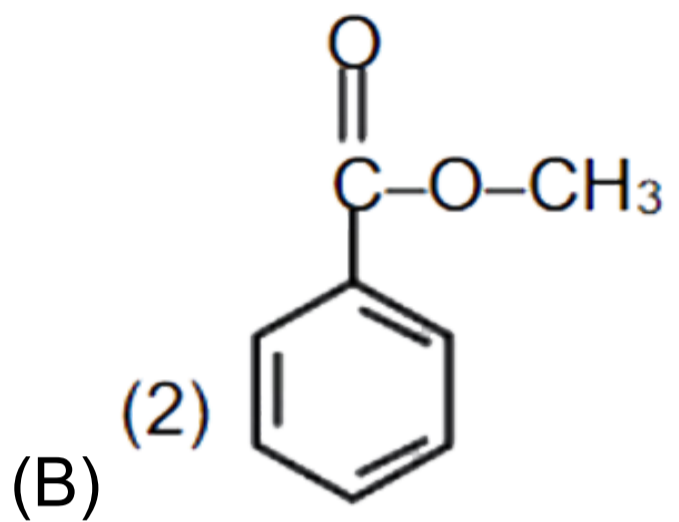
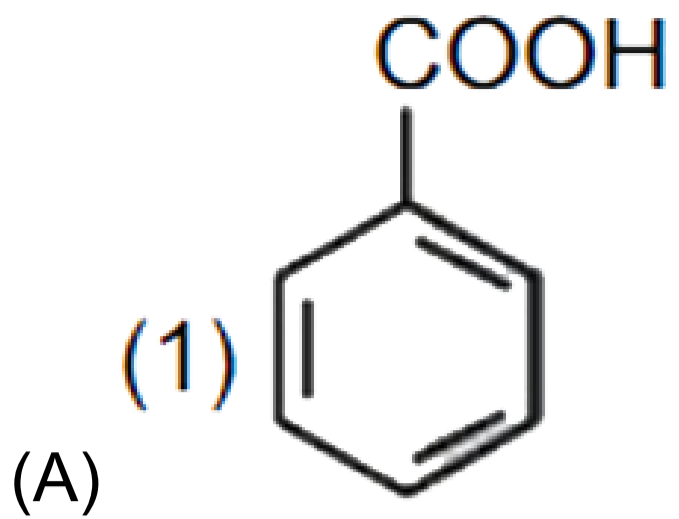
[© Watch Free Video Solution on Doubnut](#)

7 - 9464154

**JEE MAINS 09 APRIL 2019 - PAPER 1 SHIFT 1 -
MEMORY BASED - CHEMISTRY**

The correct product of the following reaction is:





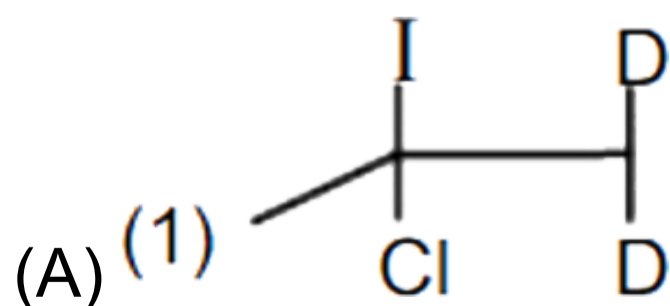
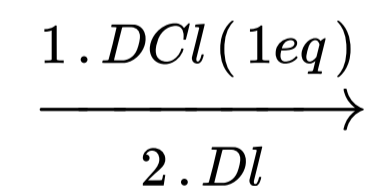
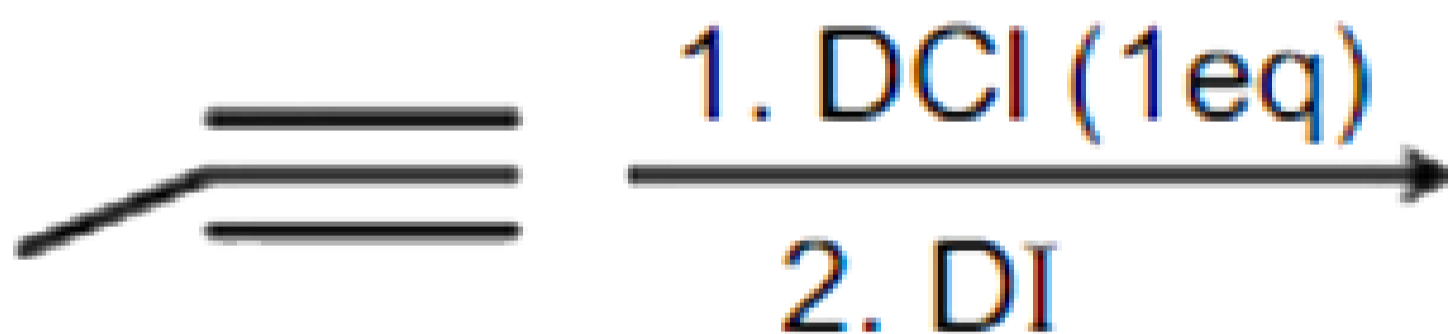
CORRECT OPTION: A

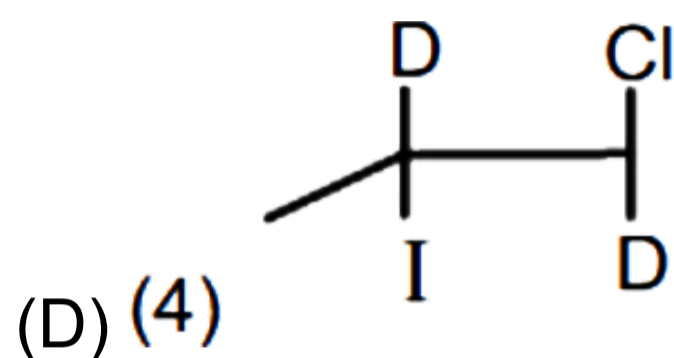
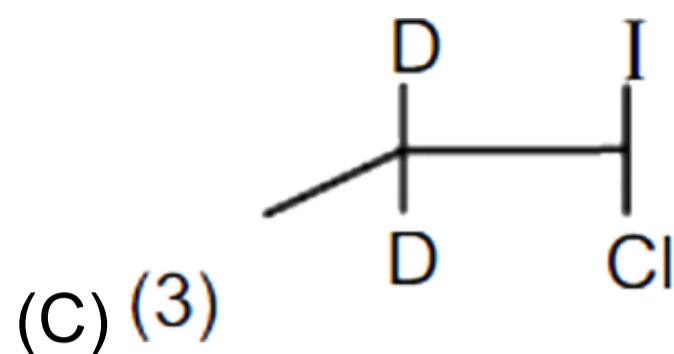
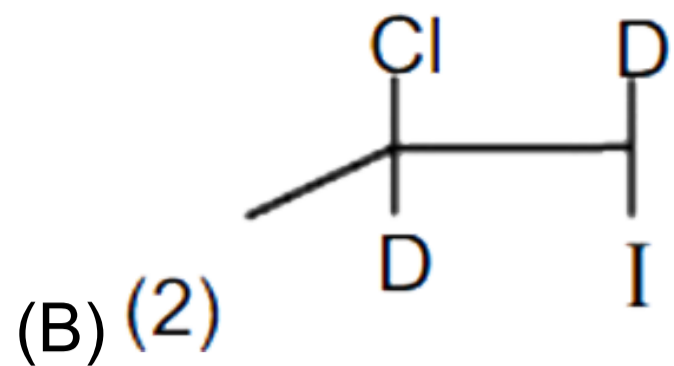
[Watch Free Video Solution on DoubtNut](#)

8 - 9464155

JEE MAINS 09 APRIL 2019 - PAPER 1 SHIFT 1 - MEMORY BASED - CHEMISTRY

Write the product of the given reaction:



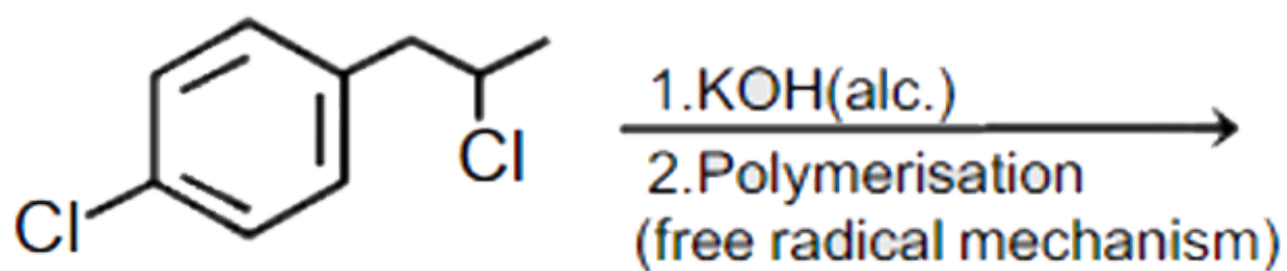


CORRECT OPTION: A

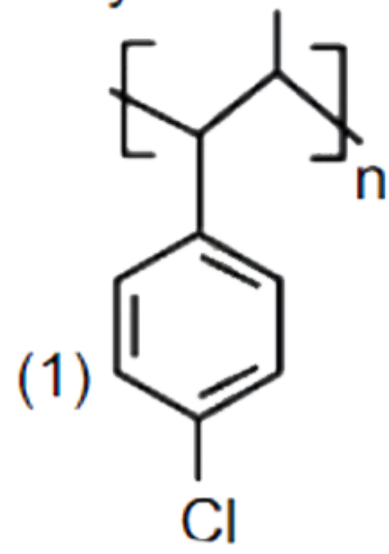
[© Watch Free Video Solution on Doubtnut](#)

9 - 9464156

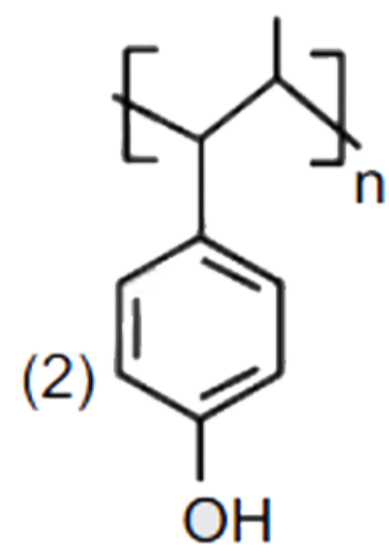
**JEE MAINS 09 APRIL 2019 - PAPER 1 SHIFT 1 -
MEMORY BASED - CHEMISTRY**



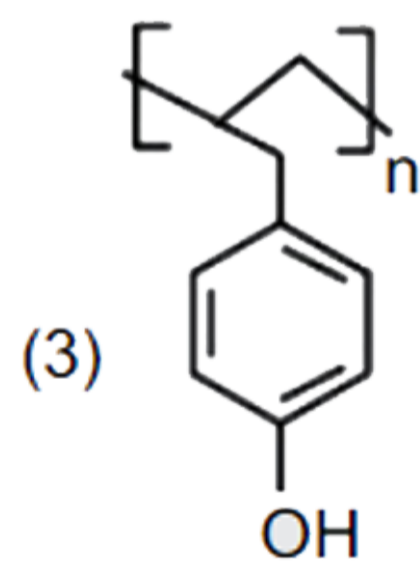
Polymer is:



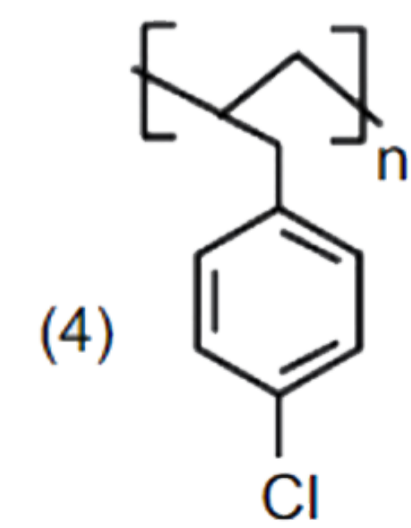
(A)



(B)



(C)



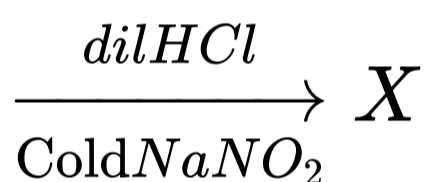
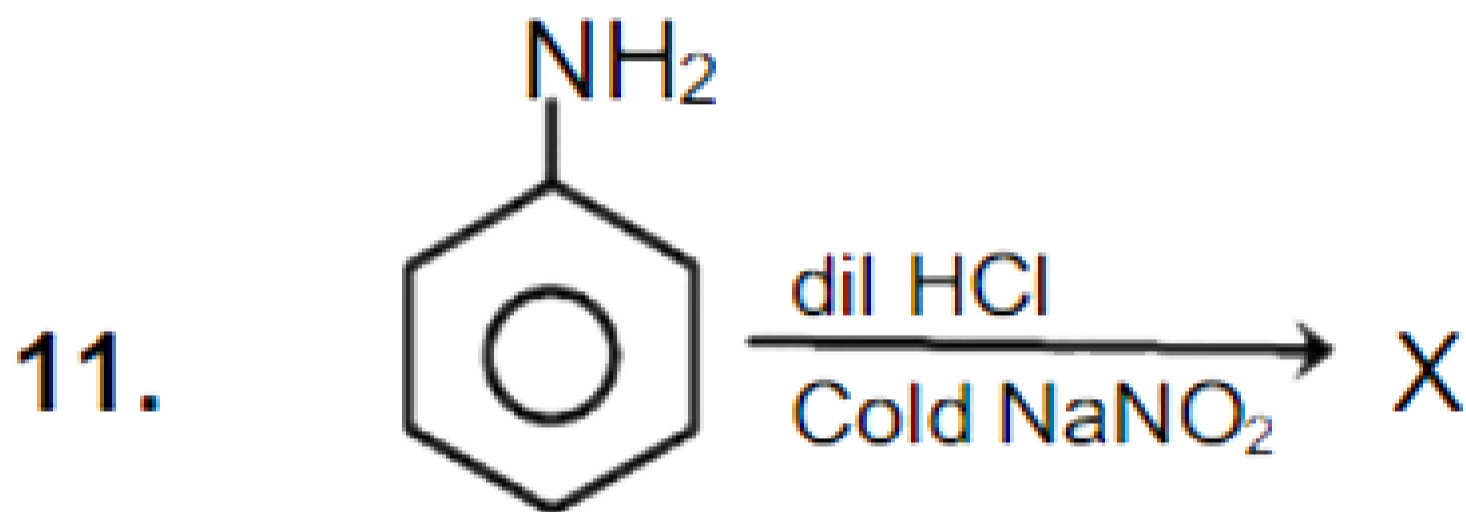
(D)

CORRECT OPTION: A

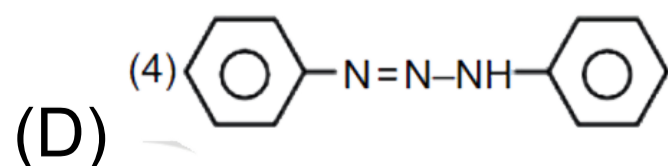
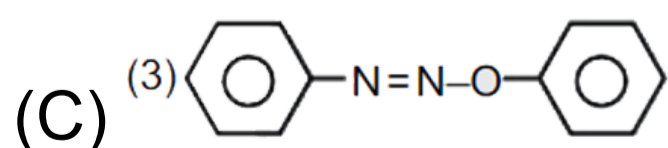
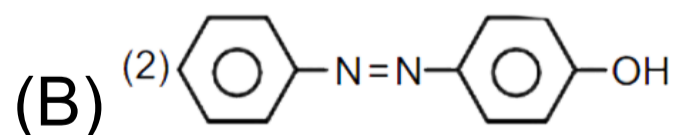
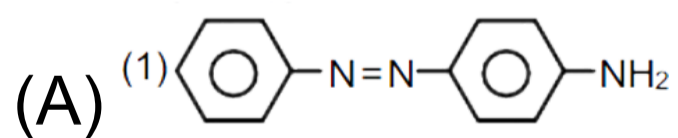
[Watch Free Video Solution on Doubtnut](#)

10 - 9464157

JEE MAINS 09 APRIL 2019 - PAPER 1 SHIFT 1 - MEMORY BASED - CHEMISTRY



X is mixed with a mixture of phenol and aniline in acidic medium. The product obtained is



CORRECT OPTION: A

[📺 Watch Free Video Solution on Doubtnut](#)

**JEE MAINS 09 APRIL 2019 - PAPER 1 SHIFT 1 -
MEMORY BASED - CHEMISTRY**

In $CuSO_4 \cdot 5H_2O$ how many molecules of water are indirectly connected to Cu

(A) 5

(B) 4

(C) 2

(D) 1

CORRECT OPTION: D

[📺 Watch Free Video Solution on Doubtnut](#)

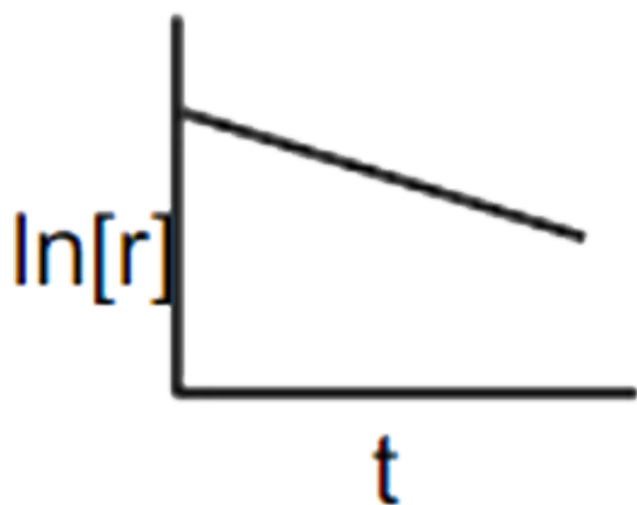
11 - 9464158

12 - 9464159

JEE MAINS 09 APRIL 2019 - PAPER 1 SHIFT 1 -

MEMORY BASED - CHEMISTRY

$[r]$ = concentration of reactant and t be the time



Identify the order is correct option for order-

- (A) 1 and 0
- (B) 2 and 3
- (C) 3 and 2
- (D) 0 and 2

CORRECT OPTION: A

[© Watch Free Video Solution on Doubtnut](#)

The vapour pressure of pure liquid M & N are 700mm of Hg and 450mm of Hg respectively. Which of the following option is correct ?

Given : $X_N, X_M =$ mole fraction of N & M in liquid phase

$Y_N, Y_M =$ mole fraction of N & M in vapour phase

(A) $X_M - X_N > Y_M - Y_N$

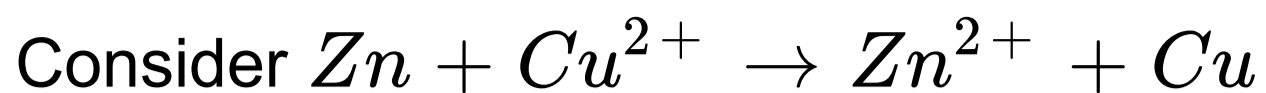
(B) $\frac{X_M}{X_N} > \frac{Y_M}{Y_N}$

(C) $\frac{X_M}{X_N} < \frac{Y_M}{Y_N}$

(D) $\frac{X_M}{X_N} = \frac{Y_M}{Y_N}$

CORRECT OPTION: C

[© Watch Free Video Solution on Doubtnut](#)



If the standard emf is $E_{\text{cell}} = 2.0V$ & $F = 96500C$

Find ΔG° (KJmol)

(A) -388

(B) $+388$

(C) -194

(D) $+194$

CORRECT OPTION: A

[© Watch Free Video Solution on Doubtnut](#)

15 - 9464162

**JEE MAINS 09 APRIL 2019 - PAPER 1 SHIFT 1 -
MEMORY BASED - CHEMISTRY**

A solution of XY (100% ionised) has osmotic pressure equal to four times the osmotic pressure of $0.01M BaCl_2$ (100% ionised). Find the molarity of XY

(A) $6 \times 10^{-2} M$

(B) $3 \times 10^{-2} M$

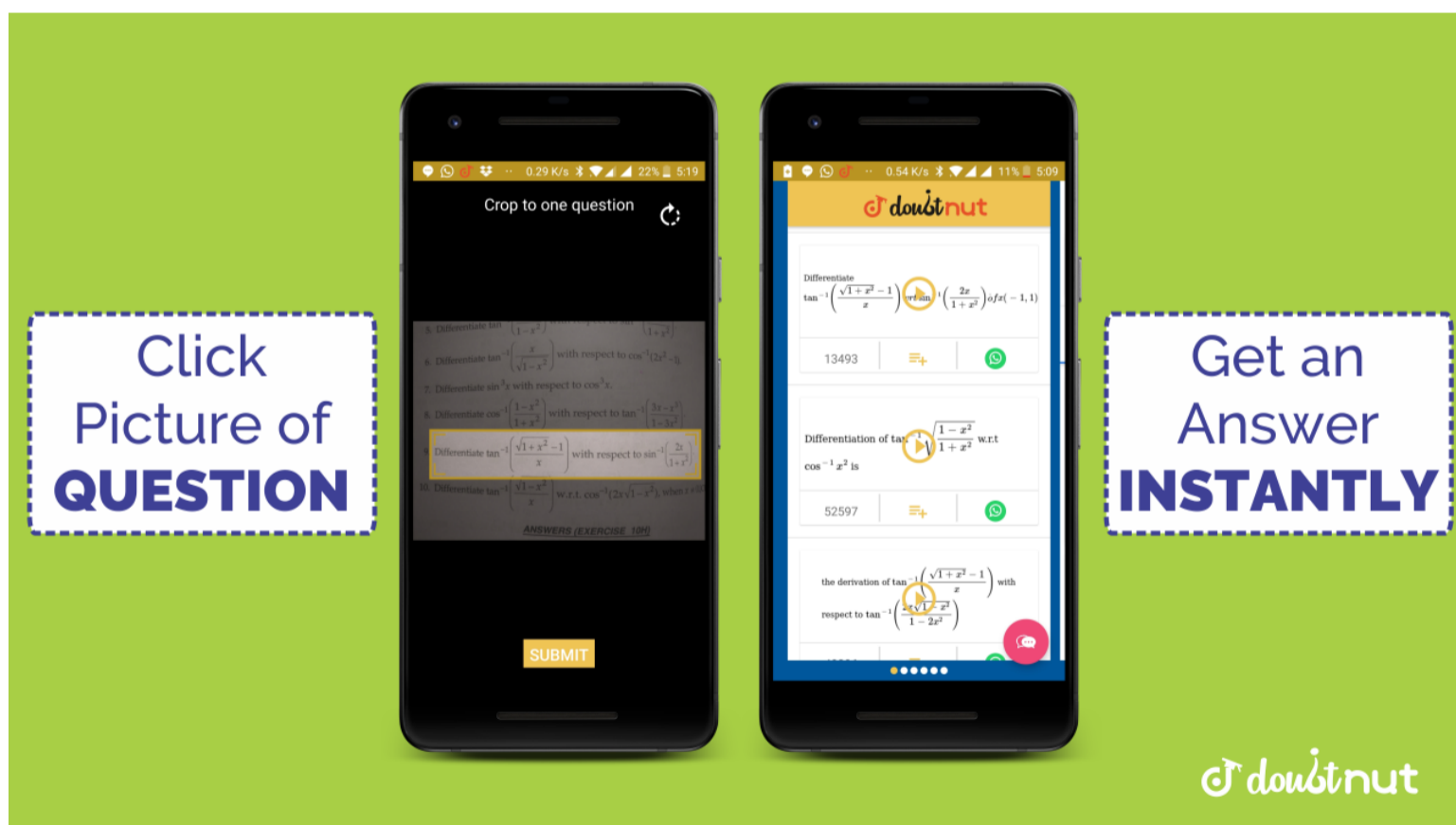
(C) $4 \times 10^{-2} M$

(D) $12 \times 10^{-2} M$

CORRECT OPTION: A


[📺 Watch Free Video Solution on Doubtnut](#)


पढ़ना हुआ आसान



Click
Picture of
QUESTION

Get an
Answer
INSTANTLY



16 - 9464163

**JEE MAINS 09 APRIL 2019 - PAPER 1 SHIFT 1 -
MEMORY BASED - CHEMISTRY**

What is the ratio of $\Delta\nu = \nu_{\max} - \nu_{\min}$ for spectral lines corresponding to Lyman & Balmer series for hydrogen

- (A) 9 : 4
- (B) 4 : 9
- (C) 5 : 7
- (D) 7 : 5

CORRECT OPTION: A

[📺 Watch Free Video Solution on DoubtNut](#)

17 - 9464164

**JEE MAINS 09 APRIL 2019 - PAPER 1 SHIFT 1 -
MEMORY BASED - CHEMISTRY**

Which of the following are path functions

- (A) W
- (B) Q
- (C) $Q + W$

(D) $H - TS$

(A) A and D

(B) A and B

(C) A,B and D

(D) A,C and D

CORRECT OPTION: B

[© Watch Free Video Solution on Doubtnut](#)

18 - 9464166

**JEE MAINS 09 APRIL 2019 - PAPER 1 SHIFT 1 -
MEMORY BASED - CHEMISTRY**

Given a and b values for Xe , Kr , Ar and He are

	Xe	Kr	Ar	He
$a(\text{L}^2\text{bar/mol}^2)$	4.1	2.3	1.3	0.03
$b(\text{L/mol})$	0.1	0.04	0.03	0.02

The gas with highest T_c is

(A) Xe

(B) Kr

(C) Ar

(D) He

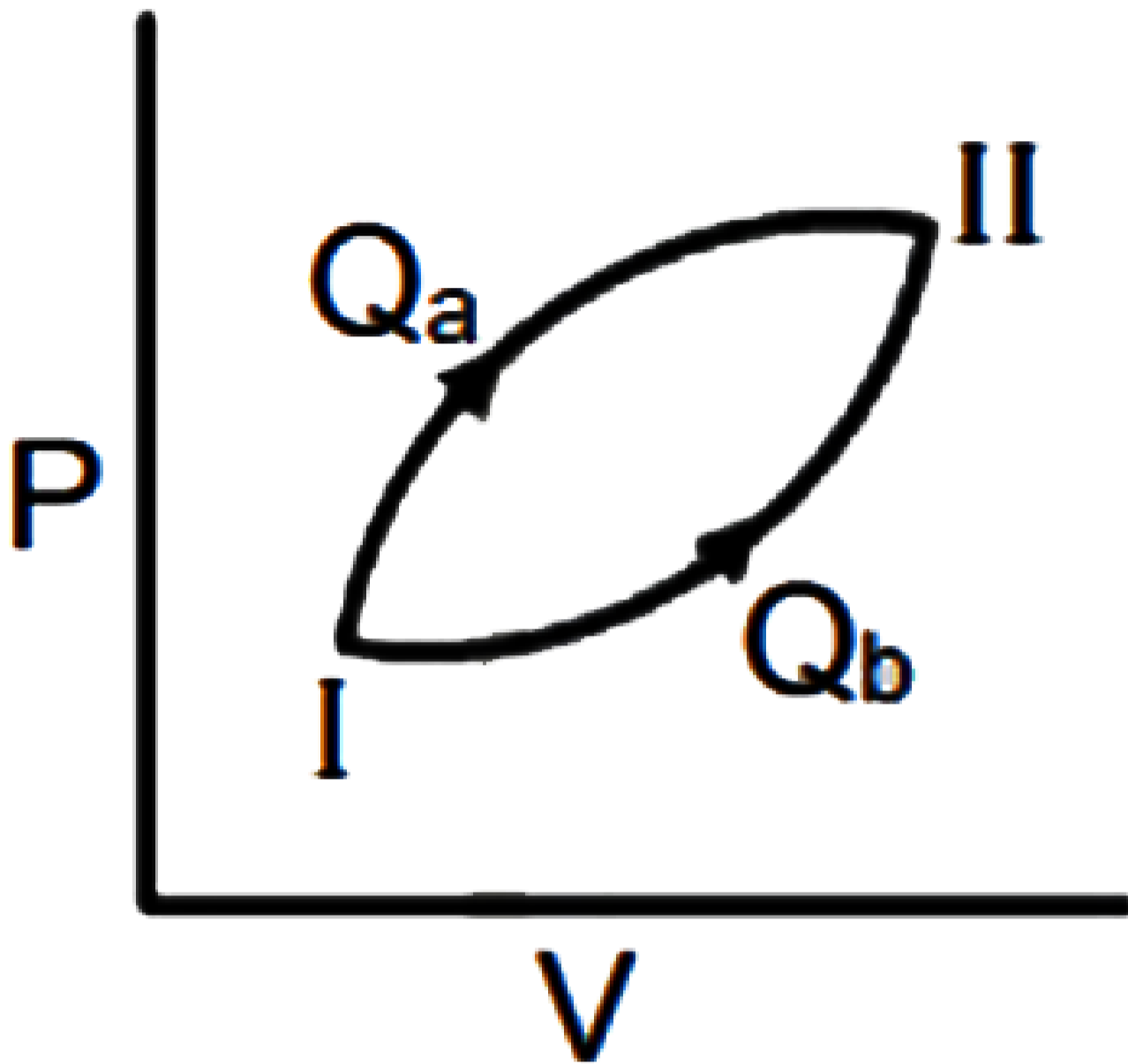
CORRECT OPTION: B

[📺 Watch Free Video Solution on Doubtnut](#)

19 - 9464167

**JEE MAINS 09 APRIL 2019 - PAPER 1 SHIFT 1 -
MEMORY BASED - CHEMISTRY**

Consider the graph



Identify correct option

- (A) $\Delta U_a = \Delta U_b, Q_a > Q_b$
- (B) $\Delta U_a > \Delta U_b, Q_a = Q_b$
- (C) $\Delta U_a = \Delta U_b, Q_a < Q_b$
- (D) $\Delta U_a < \Delta U_b, Q_a = Q_b$

CORRECT OPTION: C

[📺 Watch Free Video Solution on Doubtnut](#)

**JEE MAINS 09 APRIL 2019 - PAPER 1 SHIFT 1 -
MEMORY BASED - CHEMISTRY**

Out of C_2 , F_2O_2NO , Which will be stabilized after forming anion ?

(A) C_2

(B) F_2

(C) O_2

(D) NO

CORRECT OPTION: A

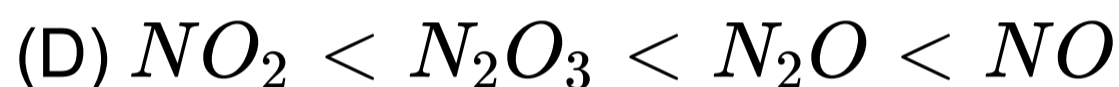
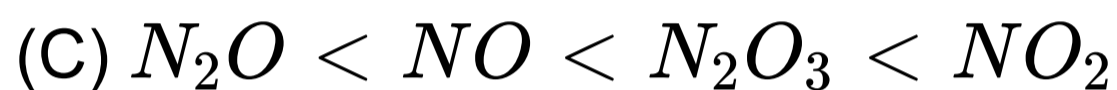
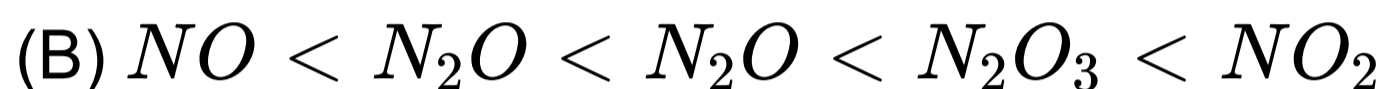
[📺 Watch Free Video Solution on Doubtnut](#)

20 - 9464168

21 - 9464170

**JEE MAINS 09 APRIL 2019 - PAPER 1 SHIFT 1 -
MEMORY BASED - CHEMISTRY**

Arrange in the increasing order of oxidation state of nitrogen for following nitrogen oxides N_2O , NO_2 , NO , N_2O_3



CORRECT OPTION: C

[© Watch Free Video Solution on Doubtnut](#)

22 - 9464171

**JEE MAINS 09 APRIL 2019 - PAPER 1 SHIFT 1 -
MEMORY BASED - CHEMISTRY**

C_{60} is aromatic allotrope of carbon containing

(A) 18 Pentagons, 14 hexagons

(B) 16 Pentagons, 16 hexagons

(C) 12 Pentagons, 20 hexagons

(D) 20 Pentagons, 12 hexagons

CORRECT OPTION: C

[© Watch Free Video Solution on Doubtnut](#)

23 - 9464172

**JEE MAINS 09 APRIL 2019 - PAPER 1 SHIFT 1 -
MEMORY BASED - CHEMISTRY**

Which of the following ores contains fluorine ?

(A) Malachite

(B) Sphalerite

(C) Cryolite

(D) Bauxite

CORRECT OPTION: C

© Watch Free Video Solution on Doubnut

 **doubnut**
पढ़ना हुआ आसान



Get Solutions as
YOU TYPE

Click Here to
TYPE & ASK



24 - 9464173

JEE MAINS 09 APRIL 2019 - PAPER 1 SHIFT 1 - MEMORY BASED - CHEMISTRY

Which of the following will have highest difference between

IE_1 and IE_2 ?

(A) K

(B) Mg

(C) Sr

(D) Sc

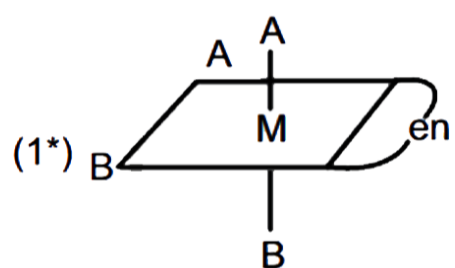
CORRECT OPTION: A

[Watch Free Video Solution on Doubnut](#)

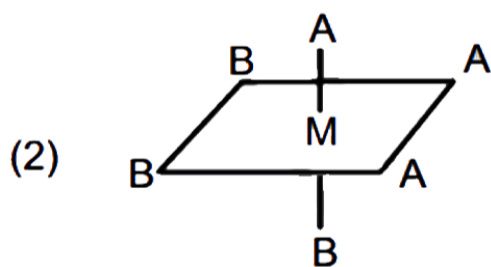
25 - 9464174

**JEE MAINS 09 APRIL 2019 - PAPER 1 SHIFT 1 -
MEMORY BASED - CHEMISTRY**

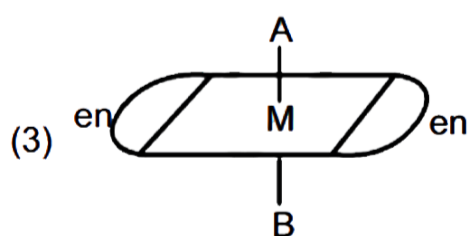
Which of the following will show optical activity



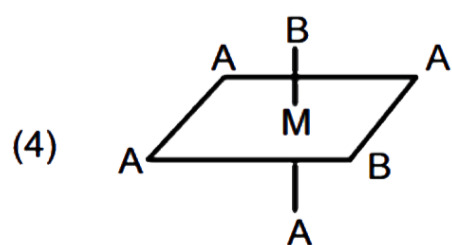
(A)



(B)



(C)



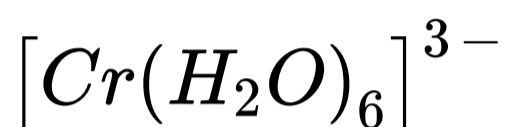
(D)

CORRECT OPTION: A

[👁 Watch Free Video Solution on Doubtnut](#)

JEE MAINS 09 APRIL 2019 - PAPER 1 SHIFT 1 - MEMORY BASED - CHEMISTRY

Which of the following orbitals are degenerate for



(A) $d_x^2 - y^2, d_{xy}$

(B) d_{xy}, d_{yz}

(C) $d_{x^2 - y^2}, d_{yz}$

(D) d_z^2, d_{xy}

26 - 9464175

CORRECT OPTION: B

[👁 Watch Free Video Solution on Doubtnut](#)



👉 Download Doubtnut to Ask Any Math Question By just a click

👉 Get A Video Solution For Free in Seconds

👉 Doubtnut Has More Than 1 Lakh Video Solutions

👉 Free Video Solutions of NCERT, RD Sharma, RS Aggarwal, Cengage (G.Tewani), Resonance DPP, Allen, Bansal, FIITJEE, Akash, Narayana, VidyaMandir

📲 Download Doubtnut Today



Get Answer just
with a click!

doubtnut
has more than
1 Lakh Video
Solutions

Update the App now!

